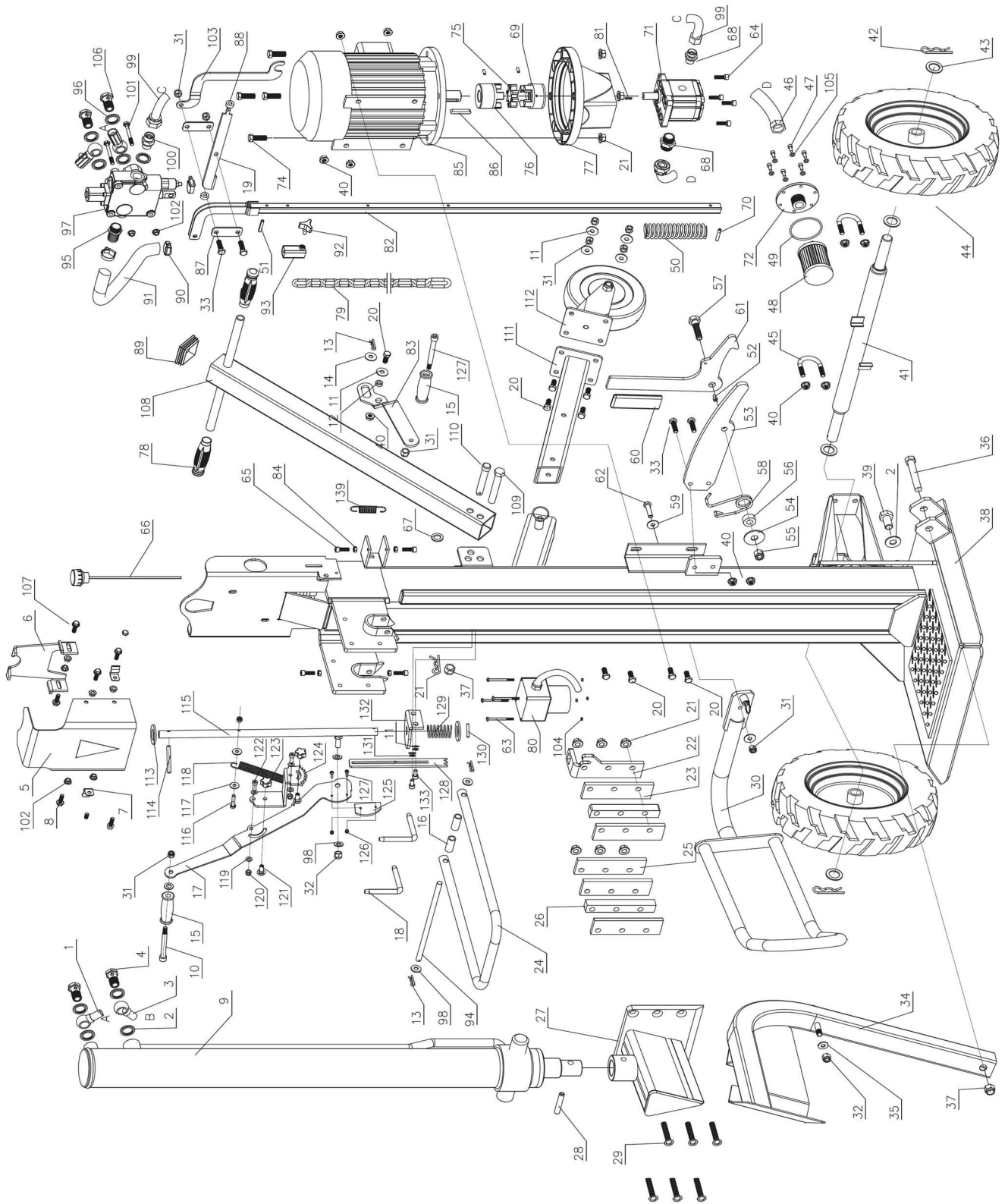


LSP 16T





EXPLODED PARTS LIST

Year: 2020

Page(s): 2/3

LSP 16 T

No	Code	Name	Qty	No	Code	Name	Qty
1	67540	Upper High Pressure Hose		49		O-ring80*3.1	
2	67541	Seal Kit 22		50	67551	Buffer Spring	
3	67542	Lower High Pressure Hose D12		51		Pin 6x35	
4	67543	Hose Link		52		Screw M6X10	
5	67544	Upper Guard		53		Lift frame lock Plate	
6		cylinder Lock Plate		54		Washer 14(big)	
7		Pin		55		Nut M14	
8		Bolt M8X25		56		Locating Bush	
9	67545	Cylinder		57		Screw	
10		Screw		58		Reset torsion Spring	
11		Washer 10(small)		59		Washer 10(middle)	
12		Sleeve 2		60		Grip	
13		Pin		61		Retaining hook	
14		Washer 10(big)		62		Bolt M10X40	
15		Grip		63		Screw M4X60	
16		Sleeve		64		Screw M8X30	
17		Pressured lever		65		Screw M8X25	
18		Cylinder pin		66	67552	Oil Dipstick	
19		operated plate		67		Washer 16	
20		Bolt M10X25		68	67553	Hose Fitting(ZG1/2-M22x1.5)	
21		Flange Nut M12		69	67554	Coupler 1	
22		Plate Right		70		Pin ϕ 6x45	
23		Plate Middle		71	67555	Pump	
24		Lock Stop		72		Flange	
25		Plate Left		74		Bolt M12X45	
26		Clamp Plate		75	67556	Coupler Ring	
27	67546	Wedge Weldment		76	67557	Coupler 2	
28		Pin 12X70		77	67558	Cone Frame	
29		Screw M12X70		78		Handle Sleeve	
30		Guard Bracket Left		79	67559	Chain	
31		Locknut M10		80	67560	Switch	
32		Locknut M12		81		Spline	
33		Bolt M10X35		82	67561	Draw Bar	
34		Hoist Guard		83		Arm Right	
35		Washer 12(middle)		84		Nut M8	
36		Bolt M16X100(short)		85	67562	Motor	
37		Nut M16		86		Spline 8x50	
38		Splitting Frame Weldment		87		Fitting Plate	
39		Plug M22x1.5		88		round Plate	
40		Flange Bolt M10		89		Lever cap	
41	67547	Wheel Axle		90		Hose Clamp 18-32	
42		Pin 4		91	67563	Oil Return Hose D20	
43		Washer 24		92		Knob	
44	67548	Tyre		93		Regulating Sleeve	
45		O-ring75X2.65		94		lock shaft	
46	67549	Inlet Hose		95	67564	Hose Connector	
47		Screw M6X14		96		Seal Kit 22	
48	67550	Oil Filter		97	67565	Valve	

