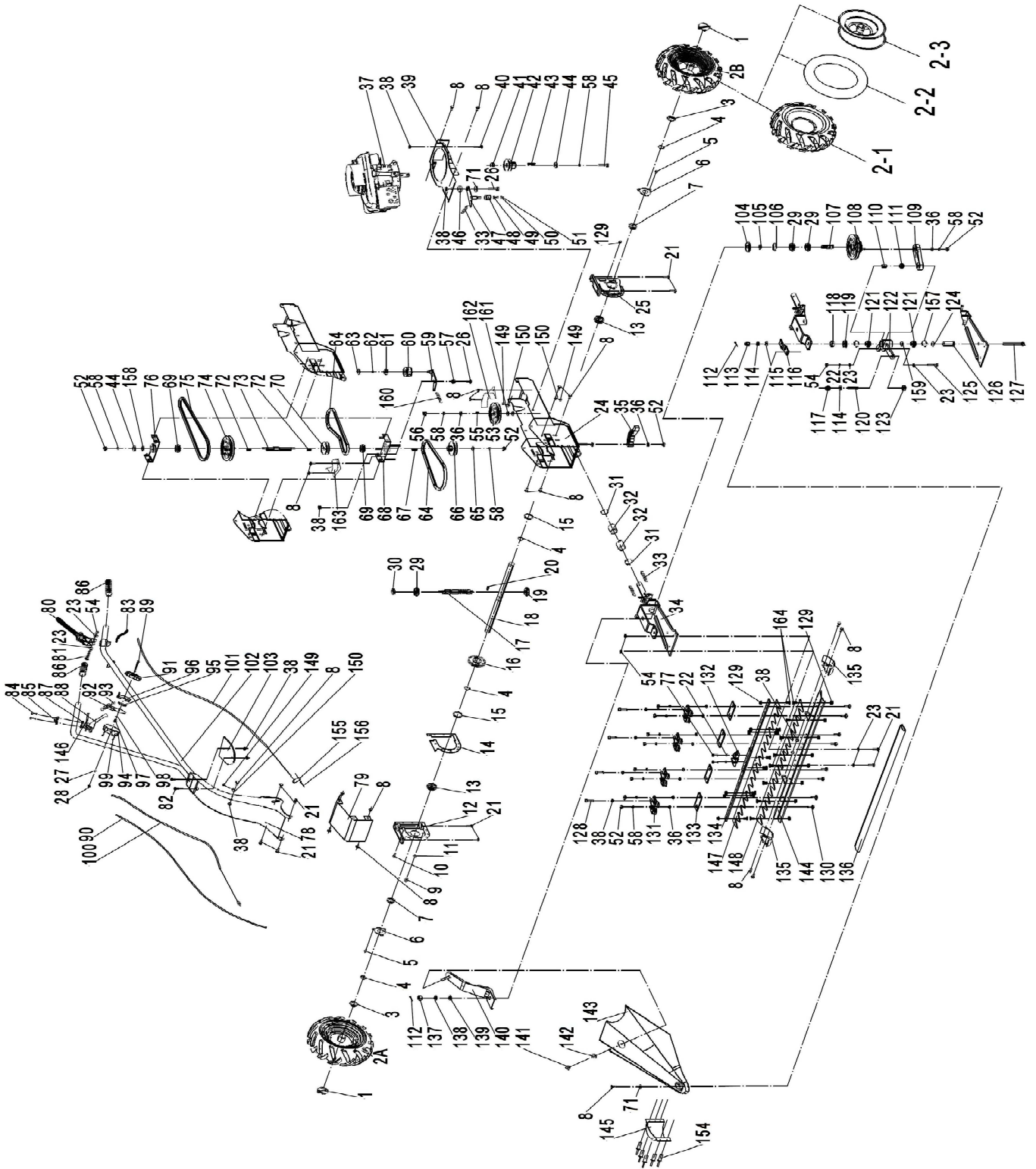


VFM 888 R





EXPLODED PARTS LIST

Year: 2019

Page(s): 2/3

VFM 888 R

No	Code	Name	Qty	No	Code	Name	Qty
1	56931	Ring Lock	2	45	56963	3/8 1 inch 24 tooth	1
2A		Wheel (right)	1	46	56964	Tension bushing	1
2B		Wheel (left)	1	47	56965	Clutch arm 2 assembly	1
2-1	56932	Wheel tire	2	48	56966	Tension pulley	1
2-2	56933	Wheel tube	2	49	56967	Deep groove ball bearing 628	2
2-3	56934	Wheel hub	2	50		Circlip 24	1
3	56935	Driving Shaft cap	2	51		Circlip 8	1
4	56936	Circlip 25	4	52		Locknut M10	12
5	56937	Outer Hexagon flange Bolt M6x12	6	53	56968	Driving Big belt wheel	1
6	56938	Oil seal cap	2	54		Locknut M8	6
7	56939	Framework oil seal 925x940x7	2	55	56969	Flat key 4x4x15C	1
8		Outer Hexagon flange Bolt M8x16	26	56		Outer Hexagon nut M10x1	1
9	56940	Outer Hexagon flange Bolt M10*1*1	2	57	56970	Tension shaft bushing	1
10	56941	Outer Hexagon flange Bolt M6*22	9	58		Spring washer 10	13
11		Washer assembly 910	2	59	56971	Clutch arm assembly	1
12	56942	Right case	1	60	56972	Tension wheel	1
13	56943	Deep groove ball bearing 6005	2	61		Deep groove ball bearing 6200	1
14	56944	Gasket	1	62		Circlip 10	1
15	56945	Washer	2	63		Circlip 30	1
16	56946	Worm wheel	1	64	56973	Belt V13x780	2
17	56947	Worm pole	1	65		Flat washer 910x924x2	1
18	56948	Output shaft	1	66	56974	Cutting small belt wheel	1
19	56949	Deep groove ball bearing 6302	1	67	56975	Flat key 5x5x30A	1
20	56950	Semicircle key 5x6.5x16	1	68	56976	Down bearing seat	1
21		Outer Hexagon flange Bolt M8x20	12	69	56977	Deep groove ball bearing 6203	2
22		Spring washer 8	3	70	56966	Driving small belt wheel	1
23		Flat washer 8	8	71		Flat washer 98x922x2	2
24	56951	Engine seat assembly	1	72	56978	Flat key 5x5x20C	2
25	56952	Left case	1	73	56979	Middle shaft	1
26		Outer Hexagon flange Bolt M8x25	2	74	56980	Big belt wheel	1
27		Flat washer 6	1	75	56981	Belt V13x1060	1
28		Locknut M6	1	76	56982	Up bearing seat	1
29	56953	Deep groove ball bearing 6004	3	77	56983	Inner Hexagon Bolt M8x1x20	2
30	56954	Framework oil seal 920x932x6	1	78	56984	Handle arm	1
31		Circlip 35	2	79	56985	Engine seat cap	1
32	56955	Bearing	2	80	56986	Clutch lever	1
33	56956	Clutch Spring	3	81	56987	Outer Hexagon Bolt M8x50	1
34	56957	Fixing board	1	82	56988	Round Head Square Neck Ccrew M8	2
35	56958	Tension arm	1	83	56989	Clutch lever lock pole	1
36		Flat washer 10	11	84		Inner Hexagon Bolt M6x20	2
37		Engine	1	85	56990	Clutch bar seat (up)	1
38		Flange Locknut M8	16	86	56991	handle grip	2
39	56959	Engine seat	1	87	56992	Clutch bar seat (down)	1
40		Outer Hexagon flange Bolt M8x40	3	88	56993	Clutch lever	1
41	56960	Small belt wheel bushing spacing	1	89		Outer Hexagon Bolt M6x60	1
42	56961	Small belt wheel	1	90	56994	Driving clutch cable	1
43	56962	Flat key 4.78x5x35A	1				
44		Flat washer 910x932x4	2				



EXPLODED PARTS LIST

Year: 2019

Page(s): 3/3

VFM 888 R

No	Code	Name	Qty	No	Code	Name	Qty
91	56995	Left throttle switch box	1	139		Flat washer 16	1
92		Throttle lever	1	140	57027	Front cover fixing seat	1
93		Throttle lever Plug	2	141		Locknut M12	1
94		Right throttle switch box	1	142		Flat washer 913.5x937x3	1
95		Location board	1	143	57028	Front cover plate	1
96		Throttle switch fixing board	1	144	57029	Down blade frame	1
97		Rivet	1	145	57031	Connect rod cover	1
98		Spring washer	1	146	57032	Suit rivet	1
99		Screw ST2.9x20	2	147	57024	Integral upper blade	1
100		56996	Throttle cable	1	148	57030	Integral lower blade
101	56997	Cutting clutch cable	1	149		Nozzle sleeve	3
102	56998	Handle assembly	1	150		cable protector	3
103	56999	Handle rubber gasket	1	154		Rivet 4x12	5
104	57000	Cutting big belt wheel cover	1	155		Stay head	1
105	57001	Cutting big belt wheel bushing	1	156		Pin 1.5x20	1
106		Circlip 42	1	157		Circlip 32	
107	57002	Cutting big belt wheel shaft	1	158	57033	Upper bearing sleeve	1
108		Cutting big belt wheel	1	159	57034	Driven connecting rod bearing spacer sle	1
109	57003	Driving connect rod	1	160	57035	Clutch return spring	1
110	57004	Driving connect rod shaft bushing	1	161		Large belt wheel washer	
111	57005	Cone needle bearing NK1520	1	162	57036	Walking a big belt wheel guard	1
112	57006	Pin 3x30	2	163	57037	Walking a small belt wheel guard	1
113	57007	Slotted nuts M14	1	164		Hexagonal countersunk head screw	16
114		Spirng washer 14	2				
115		Flat washer 14	1				
116	57008	Cover fixing seat	1				
117		Outer Hexagon nut M14	1				
118	57009	Driven connect rod bushing	1				
119	57010	Driven connect rod seat cover	1				
120	57011	Sliding block Screw	1				
121	57012	Cone needle bearing HK2516	2				
122	57013	Driven connect rod assembly	1				
123	57014	Sliding block	1				
124		Driven connect rod washer	1				
125	57015	Inner Hexagon Bolt M8x45	1				
126	57016	Driven connect rod shaft	1				
127	57017	Outer Hexagon Bolt M14x110	1				
128	57018	Inner Hexagon Bolt M8x30	4				
129		Flange Locknut M6	23				
130	57019	Outer Hexagon Bolt M10x25	8				
131	57020	Blade fixing board	4				
132	57021	Slider base	1				
133	57022	Adjuster plate	4				
134	57023	Up blade frame assembly	1				
135	57025	Support seat assembly	2				
136		Blade protector	1				
137	57026	Slotted nuts M16	1				
138		Spring 16	1				