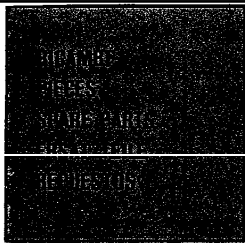


6LD325  
6LD325/C  
6LD360

6LD400  
6LD400/C



LC  
FAB  
REC  
MA

GEN  
ORIGINAL  
REPUESTOS  
RICAMBI  
PIECES  
GENUINE  
ORIGINAL  
SPARE  
PARTS  
ERSATZTEILE  
PIECES  
D'ORIGINE  
ORIGINAL  
RICAMBI  
ORIGINALI  
PIECES  
GENUINE  
ORIGINAL  
SPARE  
PARTS  
ERSATZTEILE  
PIECES  
D'ORIGINE  
ORIGINAL

LOM  
FABBI  
REGG  
MAE

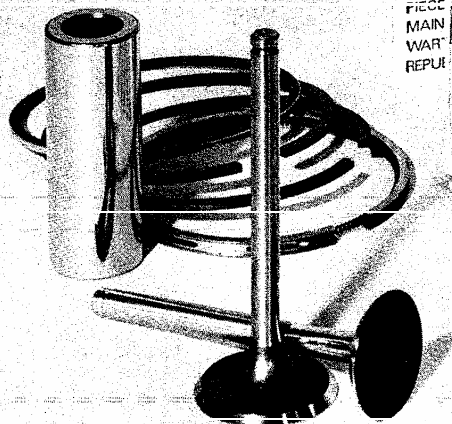
### SERVICE

LOMBARDINI  
FABBRICA ITALIANA MOTORI S.p.A.  
REGGIO EMILIA, ITALIA  
MADE IN ITALY

SER  
POC  
GAS  
DICI  
SER  
SERI  
POCI  
GASI  
DICH  
SERIE  
RICAM  
PIEC  
MAI  
WAI  
REPU

SERIE GUARNIZIONI  
POCHETTE JOINTS  
GASKET SET  
DICHTUNGSSATZ  
SERIE JUNTAS

RICAMBI PRIMO IMPIEGIO  
PIECES POUR L'ENTRETIEN  
MAINTENANCE SPARE PARTS  
WARTUNG -ERSATZEILE  
REPUESTOS DE PRONTO EMPLEO

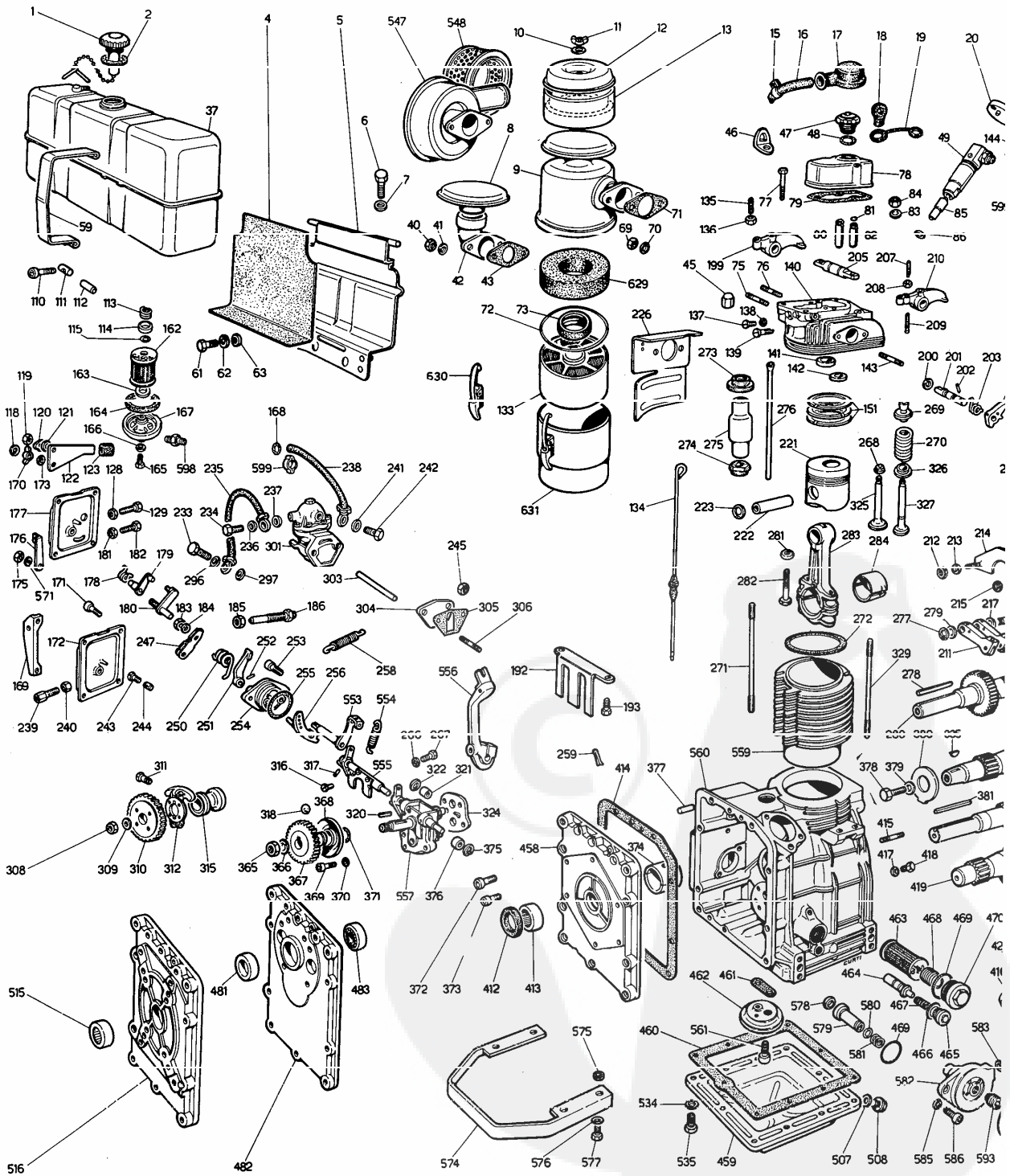


REPUESTOS ORIGINALS  
ORIGINAL ERSATZTEILE  
GENUINE SPARE PARTS  
PIECES D'ORIGINE  
RICAMBI ORIGINALI

RICAMBI PER MOTORE STANDARD.  
PER APPLICAZIONI SPECIALI CONSULTARE  
IL CATALOGO PRESSO I CENTRI ASSISTENZA  
E RICAMBI.

PIECES POUR DES MOTEURS STANDARD.  
POUR LES ADAPTATIONS CONSULTER  
LE CATALOGUE AUPRES  
DES AGENTS SERVICE.

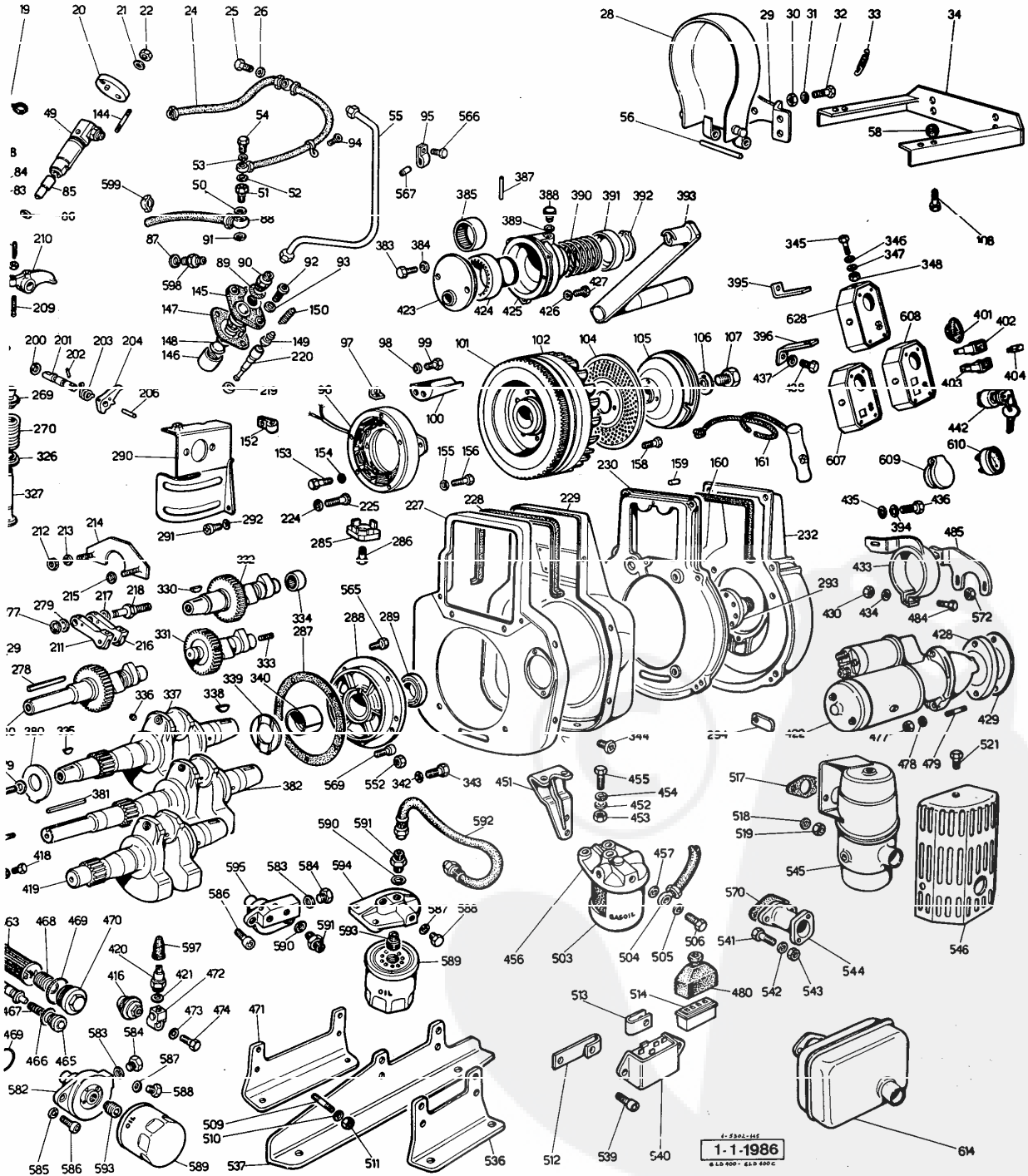
SPARE PARTS FOR STANDARD  
FOR SPECIAL APPLICATIONS :  
CATALOG AT SERVICE CENTER



FOR STANDARD ENGINE.  
APPLICATIONS SEE MASTER  
SERVICE CENTERS.

ERSATZTEILE FÜR STANDARD-MOTOREN.  
FÜR SONDERANFERTIGUNGEN SIEHE  
ERSATZTEILKATALOG BEI SERVICE  
WERKSTÄTTEN.

REPUESTOS PARA MOTORES STANDARD.  
PARA APLICACIONES VEASE CATALOGO  
EN LAS ESTACIONES SERVICE.



-----  
 LEGENDA ..... TAVOLA RICAMBI ..... MATR.  
 SPARE PARTS TABLE ..... P.NO. ... 1.5302.145  
 TABLEAU PIECES DETACHEES ..... REF. ,,  
 -----

\*\*\*\*\*  
 21.11.1986  
 \*\*\*\*\*

MOTORI TIPO	6LD 325	6LD 325/C	CILINDRO STACCATO
ENGINES TYPE			DETACHEABLE CYLINDER
MOTEURS TYPE	6LD 360		CYLINDRE ENLEVABLE
MOTOREN TYP			AUSWECHSELBAREN ZYLINDER
MOTORES TIPO	6LD 400	6LD 400/C	CILINDRO SUELTO

Vedi/See/Voir

Libretto Uso e Manutenzione  
 Use-Maintenance booklet ..... 1.5302.077  
 Livret Emploi-Entretien  
 Libretto Service  
 Service directory ..... 1.7968.002  
 Réseau S.A.V.  
 Serie accessori  
 Accessory set ..... 283.8140.080  
 Jeu accessoires

Note/Remarks/Remarques

F - alta movimentazione/fast moving part/haut mouvement.  
 S - media movimentazione/medium moving part/moyen mouvement.  
 D - bassa movimentazione/slow moving part/bas mouvement.  
 E - ad esaurimento/exhausting part/piece en epuisement.  
 N - particolare nuovo o fornito su richiesta/  
 -new part or part supplied upon request/  
 -piece nouvelle ou fournie sur demande.  
 A - valido dal motore.../from eng.S.No.../a partir du moteur...  
 (vedi Circolare Tecnica/see Service Letter/voir Circ.Techn.)  
 B - valido fino al motore.../up to eng.S.No.../jusqu'au moteur...  
 (vedi Circolare Tecnica/see Service Letter/voir Circ.Techn.)  
 I - intercambiabile/interchangeable.  
 (vedi Circolare Tecnica/see Service Letter/voir Circ.Techn.)  
 V - stock vitale per Officine Service.  
 vital stock for Service Dealer.  
 stock vital pour Stations Service.  
 C - stock vitale per Costruttori, Esportatori, Enti di Stato.  
 vital stock for Producers, Exporters, State Companies.  
 stock vital pour Constructeurs, Export., Institut. de l'Etat.  
 R - stock vitale per Rettifica.  
 vital stock for Grinding Workshops.  
 stock vital pour Usines de Rectification.  
 10/50/2-q.ta minima fornibile/min.supplied q.ty/q.te min.fournie.  
 = gruppo completo/assembly/groupe complet.  
 + componente del gruppo/assembly component/composant du groupe.

-----  
 Serie guarnizioni/Gasket set ..... 520.8180.092 ..... 6LD325-325/C  
 530.8180.082 ..... 6LD360  
 540.8180.063 ..... 6LD400-400/C  
 -----

Tipo motore  
Engine type

Blocco motore  
Short block

6LD 325	CONIC.	5200.1560.192
6LD 360	CONIC.	5300.1560.177
6LD 360	EXT.4 SAE	5300.1560.178
6LD 360	EXT.A 3	5300.1560.179
6LD 360	EXT.9 SAE	5300.1560.180
6LD 400	CONIC.	5400.1560.141
6LD 400	EXT.4 SAE	5400.1560.142
6LD 400	EXT.A 3	5400.1560.143
6LD 400/C	CONIC.	5430.1560.149
6LD 400/C	EXT.4 SAE	5430.1560.150

FIG. MATRICOLA Q.TA NOTE GR. 6 - 1.5302.145  
FIG. P.NO Q.TY REMARKS PAG. 02

1+2= =2830.9043.025 FV C	1	TAPPO SERBATOIO/FUEL TANK CAP
2+ 2700.4650.056 DV C 10	1	guarnizione/joint
4 500.4701.010 FV C 10	1	guarnizione/joint
5 500.8866.053 F C	1	supp.serb.l.dist./gear side tank support
6 9.1770.004 F C 10	2	bullone/bolt M 8 X 1,25 X 20
7 9.7565.007 F C 10	2	rondella/washer
8 292.2135.094 S C	1	cappello/inlet cover
9+72+73+133+629+630+ 631+= =540.3700.111 FVIC	1	FILTRO ARIA CON CAPPELLOTTO AIR CLEANER WITH AIR INLET COVER std.
=540.3700.112 DVIC	1	per motori con pompa alimentazione for engines with feed pump
9+10+11+12+13+72+73+ 133+629+630+631= =540.3700.109 FVIC	1	FILTRO ARIA CON PREFILTRO A CICLONE CYCLONIC TYPE AIR CLEANER std.
=500.3700.108 E	1	per motori con pompa alimentazione for engines with feed pump
10+ 9.7555.004 FV C 10	1	rondella/washer
11+ 9.3200.002 FV C 10	1	dado/nut
12+ 500.2125.055 F C	1	cappello prefiltro/prefilter cover
13+ 500.1301.053 FV C 10	1	prefiltro/prefilter
15+ 2760.3617.020 S C 10	1	fascetta/strip fixing
16+ 5000.9601.044 FV C 10	1	tubo sfiato/breather pipe mm 500
17+ 2830.2145.003 FV C	1	cappuccio/cap
18 270.9055.003 FV C 10	1	tappo/starter cap
19 500.3695.038 F C 10	1	filo/wire
20 500.3790.042 S IC	1	flangia/flange
21 9.7565.004 F C 10	2	rondella/washer
22 9.3240.008 FV	10	dado/nut
24 500.9601.064 FV C 10	1	tubo spurgo/bleeding pipe (mm 530)
25 9.1901.029 FVIC 10	1	bullone raccordo/connection bolt
26 9.4670.058 FV C 10	2	guarnizione/joint
28+29+56= =5000.6927.036 D	1	PROTEZIONE FULEGGIA PULLEY GUARD
29+ .....		vedi/see fig.No. 28+...
30 9.3240.008 FV	10	4 dado/nut
31 9.7565.004 F C 10	4	rondella/washer
32 9.1760.032 S C 10	4	bullone/bolt M 6 X 1 X 14
33 5000.5725.034 S	10	2 molla/spring
34 5300.8903.052 D	1	supporto/support

FIG. MATRICOLA	Q.TA	NOTE	GR. 6 - 1.5302.145
FIG. P.NO	Q.TY	REMARKS	PAG. 03
37+1+2= =500.8103.038 F C	1	SERBATOIO COMPLETO/FUEL TANK std.	
40 9.3240.021 SV C	10	2 dado/nut	
41 9.7565.007 F C	10	2 rondella/washer	
42 5200.2942.019 S IC	1	1 curva scarico/exhaust pipe	
43+ 500.4500.092 FV C	10	1 guarnizione/joint	
45 9.3230.030 SV C	10	2 dado lato distribuzione/gear side nut	
46+ 904.8506.003 S AC	10	1 squadretta/angle bracket	
47+48= =270.9050.021 FV C	1	TAPPO SFIATO/BREATHER CAP std.	
47+15+16+17+48= =2830.9050.029 FV C	1	TAPPO SFIATO/BREATHER CAP protetto/protected	
48+ 9.1200.014 FVIC	10	1 anello OR/rubber oil seal	
49+85= =540.6615.043 S IC	1	PORTAPOLVERIZZATORE/NOZZLE HOLDER std.	
=540.6615.044 D	1	Bosch type	
50 9.4670.060 FVIC	10	1 guarnizione/joint	
51 710.1901.012 FVIC	10	1 bullone raccordo/connection bolt	
52 9.4670.058 FV C	10	1 guarnizione/joint	
53 9.4670.058 FV C	10	1 guarnizione/joint	
54 9.1901.029 FVIC	10	1 bullone raccordo/connection bolt	
55 500.9372.090 FV C	1	1 tubo mandata comb./fuel delivery pipe	
56+ .....		vedi/see fig.No. 28+...	
58 720.3527.004 F	10	4 distanziale/spacer	
59+110+111= =500.3617.010 F C	10	2 FASCETTA FISSAGGIO SERBATOIO FUEL TANK FIXING CLAMP	
61 9.1770.004 F C	10	2 bullone/bolt M 8 X 1,25 X 20	
62 9.7565.007 F C	10	2 rondella/washer	
63 9.7625.012 FV C	10	2 rondella/washer	
69 9.3240.018 FV	10	2 dado/nut	
70 9.7565.007 F C	10	2 rondella/washer	
71+ 500.4500.092 FV C	10	2 guarnizione/joint	
72+ 500.4775.120 FVAC	10	1 guarnizione/joint H=10 Diam.=135	
73+ 500.1261.072 FVIC	10	1 anello ten./seal ring H=17,6 Diam.=54	
75+ 9.6780.010 F	10	1 prigioniero/stud M 8 X 22 (34)	
76+ 9.6780.071 SV C	10	1 prigioniero/stud M 8 X 28 (40)	
77+ 9.9730.034 F C	10	2 vite/screw M 8 X 1,25 X 55	
78+46+77= =540.2125.103 S C	1	CAPPELLO SCATOLA BILANCIERI ROCKER BOX CAP	
79+ 540.4400.023 FV C	50	1 guarnizione/joint	
80+ 500.4845.071 FVICR10	10	1 guida v.asp./inlet v.guide std.	
" 500.4845.075 FVICR10	1	" " " +0,50	
81+ 500.1160.008 FV C	10	2 anello/circlip	
82+ 500.4845.030 FV CR10	10	1 guida v.scar./exhaust v.guide std.	
" 500.4845.052 FV CR10	1	" " " +0,50	
83 9.7626.065 S	10	2 rondella lato volano/flywheel side washer	
84 9.3240.076 FV C	10	2 dado lato volano/flywheel side nut	
85+ 395.6531.104 FVIC	1	1 polverizzatore/nozzle std.	
" 395.6531.105 N	1	" " " Bosch type	

FIG.	MATRICOLA	Q.TA	NOTE	GR. 6 - 1.5302.145
FIG.	P.NO	Q.TY	REMARKS	PAG. 04
86	9.4670.005	FVBC 10	1	guarnizione/joint 0,50 D=14,50
"	9.4670.006	FVBC 10	2	" " 1,00 D=16,50
"	9.4670.064	SVAC 10	1	" " 1,00 D=18,85
"	9.4670.065	SVAC 10	1	" " 1,50 D=18,85
87	9.4670.058	FV C 10	1	guarnizione/joint
88	500.9375.204	FVAC	1	tubo da serb.l.distr.a pompa, in.(mm 142) pipe from gear side f.tank to inject.pump
89+	9.1200.031	FV C 10	1	anello OR/rubber oil seal
90+	271.7245.008	FV C 10	1	raccordo/connection
91	9.4670.060	FVIC 10	1	guarnizione/joint
92	9.9730.100	F 10	2	vite/screw M 8 X 1,25 X 25
93	9.7625.010	FV C 10	2	rondella/washer
94	9.9790.037	FV C 10	1	Vite/screw M 6 X 1 X 8
95	540.3617.078	N 10	1	fascetta/strip fixing
96	283.1156.090	FVIC	1	alternatore/voltage alternator 12 V 12 A
"	5000.1156.098	FV C	1	" " 12 V 4 A
97	500.6275.076	D C 10	1	piastra/plate
98	9.7555.004	FV C 10	2	rondella/washer
99	9.9730.012	F C 10	2	vite/screw M 6 X 1 X 20
100	5000.3350.065	S C	1	deflettore avv.el./el.start.deflector
"	540.3350.090	S C	1	deflettore avv.man./hand-cr.st.deflector
101+	530.2816.036	F AC	1	corona avviamento/crown gear
102+101=				VOLANO+CORONA/FLYWHELL+CROWN GEAR
	=540.9000.143	S C	1	avv.el./el.start. 12V 4A 6LD325-360-400
	=540.9880.144	S C	1	" " 12V 12A " "
102	500.9881.055	S C	1	x 6LD325 std.
"	540.9880.123	S C	1	x 6LD360-400 std.& avv.man./hand-cr.start. e/and 6LD325 avv.man./hand-cr.start.
"	503.9882.002	D C	1	x 6LD325/C std.
"	543.9880.128	D C	1	x 6LD400/C std.& avv.man./hand-cr.start. e/and 6LD325/C avv.man./hand-cr.start.
"	540.9880.129	N	1	x imp.luce con/senza avv.a manovella ligh.syst.with/without hand-cr.start su/on 6LD325-360-400
"	543.9880.130	N	1	x imp.luce con/senza avv.a manovella ligh.syst.with/without hand-cr.start su/on 6LD325/C-400/C
104	500.5095.076	F C	1	lamiera/panel std.& x avv.man./hand-cr.st.
105	500.6960.069	FV C	1	puleggia/pulley 6LD325-360-400 std.
"	503.6960.083	S C	1	" " 6LD325/C-400/C std.
106	9.7626.043	S IC 10	1	rondella/washer
107	9.1800.030	F IC 10	1	bullone/bolt 6LD325-360-400
"	9.1800.029	D C 10	1	" " 6LD325/C-400/C
108	9.9730.027	F 10	4	vite/screw M 8 X 1,25 X 25
110+	9.9730.016	DV C 10	2	vite/screw M 6 X 1 X,35
111+	45.1557.019	F C 10	2	blocchetto/nut
112	271.9600.057	FV C 10	2	tubo/rubber spacer
113+	273.5575.006	FV C 10	1	molla/spring
114+	273.3930.019	F C 10	1	fondello/cup
115+	9.1200.032	FV C 10	1	anello OR/rubber oil seal
118+	9.1165.001	S 10	1	anello/circlip
119+	9.3240.004	FV C 10	1	dado/nut
120+	90.6330.057	F C 10	1	piastrina/safety plate
121+	9.7625.019	S 10	1	rondella/washer
122+	500.5201.094	S C	1	leva/lever
123+	270.6550.010	D C 10	1	pomello/knob
128	9.3240.008	FV 10	1	dado/nut
129	9.1760.029	D C 10	1	bullone/bolt M 6 X 1 X 30
133+	500.5496.071	SVAC	1	massa/filtering element H=90 Diam.=119

FIG.	MATRICOLA	Q.TA	NOTE	GR. 6 - 1.5302.145
FIG.	P.NO	Q.TY	REMARKS	PAG. 05
134	500.1400.035	F C 10	1 asta livello/dipstick	std. mm 385
"	5000.1400.072	D C	1	special mm 190
135+	500.9850.048	S C 10	1 vite/screw	
136+	9.3240.008	FV 10	1 dado/nut	
137	.....			
138	.....			
139+	715.9820.080	S C 10	1 vite/screw	
140+75+76+80+81+82+			TESTA COMPLETA predisposta	
139+141+142+143+144+			per decompressione	
200+201+202+203+204+			CYLINDER HEAD preset for	
206+268+269+270+325			decompression	
326+327+634=				
=540.9200.131	S C	1		
141+	283.8000.036	FVACR10	1 sede v.aspiraz./inlet v.seat	
142+	283.8000.037	FVACR10	1 sede v.scarico/exhaust v.seat	
143+	9.6780.068	S C 10	2 prigioniero/stud M 8 X 18 (30)	std.
"	9.6780.069	F 10	2 per marm.a bauletto/for box form muffler	
144+	9.6760.035	FV C 10	2 prigioniero/stud M 6 X 53 (65)	
145+89+90=			POMPA INIEZIONE/INJECTION PUMP	
=520.6590.074	D C	1	x 6LD325-325/C	std.
=520.6590.072	D C	1	"	Bosch type
=540.6590.055	F C	1	x 6LD360-400-400/C	std.
=540.6590.065	F C	1	"	Bosch type
=540.6590.073	N	1	x 6LD400	1500 G/1' - R.p.m.
146	500.7215.035	FV C	1 punteria/tappet	
147+	500.4580.023	N 50	1 guarnizione/joint	0,30
"	500.4580.024	N 50	"	0,50
"	500.4580.029	N 50	"	1,00
148	500.6000.036	FV C 10	1 pastiglia/tappet	
149	500.9672.012	F C	1 valvolina mandata/delivery valve	
"	540.9672.029	N	1 per motori/for engines	1500 G/1' - R.p.m.
150	271.5755.034	SV C 10	1 molla/spring	
151+	520.8211.078	FV C 10	1 std. x 6LD325-325/C serie segm./ring set	
"	520.8211.079	F CR10	1 +0,50	"
"	520.8211.080	F CR10	1 +1,00	"
"	530.8211.045	FV C 10	1 std. x 6LD360	"
"	530.8211.046	F CR10	1 +0,50	"
"	530.8211.047	F CR10	1 +1,00	"
"	540.8211.056	FV C 10	1 std. x 6LD400-400/C	"
"	540.8211.017	F CR10	1 +0,50	"
"	540.8211.018	F CR10	1 +1,00	"
152	5000.3617.021	D 10	1 fascetta/clamp	x avv.el./el.st.12 V 4 A
"	530.3617.046	N	1	x avv.el./el.st.12 V 12 A
153	9.9730.012	F C 10	4 x avv.el./el.st.12 V 4 A-M 6X1X20-	
"	9.1760.001	FV 10	3 x " " 12 V 12 A-M 6X1X10	
154	9.7555.004	FV C 10	4 rondella/washer	x avv.el./el.start 12V- 4A
"	9.7565.004	F C 10	3 " " x " " " 12V-12A	
155	9.7565.004	F C 10	6 rondella/washer	x avv.el./el.start 12V- 4A
156	9.1760.042	F C 10	6 bullone/bolt	x " " " 12V- 4A
158	9.1765.053	F IC 10	4 bullone/bolt M 7 X 1 X 24	std.
"	9.1765.009	FV C 10	4 x avv.manqv./hand-crank st.	
159	90.8460.083	D 10	1 spina/taper pin	
160	500.4570.012	DV C 10	1 guarnizione/joint	
161	283.4055.003	F C	1 fune avviamento/rope starting	



FIG. MATRICOLA Q.TA NOTE GR. 6 - 1.5302.145  
 FIG. P.NO Q.TY REMARKS PAG. 06

162+113+114+115+163+ 164+165+166+167= =500.3730.028 FV C	1	FILTRO COMBUSTIBILE COMPLETO FUEL FILTER ASS.Y
162+ 500.2175.032 FV C	1	cartuccia comb./fuel filter element
163+ 273.4490.017 FV C	10	1 guarnizione/joint
164+ 500.4431.040 FV C	10	1 guarnizione/gaket
165+ 9.1760.076 N A	1	1 bullone/bolt
166+ 9.1202.052 FVAC	10	1 anello OR/rubber oil seal
167+165+166= =500.2605.024 F IC	1	COOPERCHIO FILTRO FILTER COVER ASS.Y
168 9.4670.058 FV C	10	1 guarnizione/joint
169+239+240= =500.2516.013 F C	1	COMANDO CONTROL ASS.Y
170+ 9.3200.015 FVIC	10	1 dado/nut
171 9.9790.039 FV C	10	4 vite/screw M 6 X 1 X 12
172+175+176+178+179+ 239+240+243+244+571= =500.2515.087 F C	1	COMANDO A DISTANZA COMPLETO REMOTE CONTROL ASS.Y
173+ 9.7626.054 S AC	10	1 rondella/washer
175+ 9.3240.008 FV	10	1 dado/nut
176+ 500.5202.014 F C	10	1 leva/lever
177+118+119+120+121+ 122+123+170+173+175+ 176+178+179+180= =500.2691.020 F C	1	COMANDO A MANO COMPLETO HAND CONTROL ASS.Y
178+ 500.5680.044 SV C	10	1 molla/spring
179+ 500.5202.060 S C	10	1 leva/lever
180+ 500.6371.033 D C	1	1 piastra/plate
181 9.3240.008 FV	10	1 dado/nut
182 9.1760.029 D C	10	1 bullone/bolt M 6 X 1 X 30
183+ 9.3240.008 FV	10	1 dado/nut
184+ 9.7565.004 F C	10	1 rondella/washer
185+ 9.3240.058 DV C	10	1 dado/nut
186+185= =540.8576.016 DV C	1	SUPPLEMENTO DI COPPIA EXTRA FUEL DEVICE
192 500.5095.099 S C	10	1 lamiera/panel
193 9.9790.037 FV C	10	2 vite/screw M 6 X 1 X 9
199+135+136+205+207+ 208+209+210= =540.4330.039 S C	1	GRUPPO BILANC.COMPLETO ROCKER ARM ASS.Y
200+ 9.1200.034 FV C	10	1 anello OR/rubber oil seal
201+ 500.1110.071 F C	1	1 albero decompressione/decompression shaft
202+ 9.8430.023 S C	10	1 spina/locating pin
203+ 500.5680.046 S C	10	1 molla/spring

FIG.	MATRICOLA	Q.TA	NOTE	GR. 6 - 1.5302.145
FIG.	P.NO	Q.TY	REMARKS	PAG. 07
204+200+201+202+203+			DECOMPRESSIONE COMPLETA	
204+203+ =502.3348.017 FV C			DECOMPRESSSTON ASS.Y	
204+	500.5270.078 F C	1	leva/lever	
205+	540.6045.038 DV C	1	perno/rocker arm shaft	
206+	9.8430.009 S	10	spina/locating pin	
207+	500.9850.048 S C	10	vite/screw	
208+	9.3240.008 FV	10	dado/nut	
209+	500.9050.052 D C	10	vite/screw	
210+	.....		vedi/see fig.No. 199+...	
211	500.5271.022 E	1	valido fino.../up to eng.s.No...	
"	500.5270.085 F AC	1	valido da.../from eng.s.No...	
212	9.3240.018 FV	10	dado/nut	
213	9.7555.007 FV C	10	rondella/washer	
214	503.6275.069 D	1	piastra/plate 6LD325/C-400/C	
215	9.1200.001 FV C	10	anello OR/rubber oil seal	
216	500.5271.022 E	1	valido fino.../up to eng.s.No...	
"	500.5271.054 F IC	1	valido da.../from eng.s.No...	
217	500.7550.006 S C	10	rondella/washer	
218	500.6140.080 S C	10	perno/pin	
219	500.6400.045 SV C	10	piattello/cup	
220	520.6578.041 FV C	1	pompante/plunger 6LD325-325/C	std.
"	540.6578.027 FV C	1	pompante/plunger 6LD360-400-400/C	std.
"	540.6578.032 FV C	1	" " " " " "	Bosch
221+151+222+223=			PISTONE COMPLETO (TASSATIVO 3 CAVE)	
			PISTON ASS.Y (MUST BE 3 GROOVES)	
	=520.6500.318 FV C	1	std. x 6LD325-325/C	
	=520.6500.319 F CR	1	+0,50 " "	
	=520.6500.320 F CR	1	+1,00 " "	
	=530.6500.238 FV C	1	std. x 6LD360	
	=530.6500.239 F CR	1	+0,50 " "	
	=530.6500.240 F CR	1	+1,00 " "	
	=540.6500.150 FV C	1	std. x 6LD400-400/C	
	=540.6500.151 F CR	1	+0,50 " "	
	=540.6500.152 F CR	1	+1,00 " "	
222+	500.8480.023 S C	1	spinotto/gudgeon pin x 6LD325-325/C-360	
"	395.8480.030 D C	1	" " " " x 6LD400-400/C	
223+	9.1240.017 FV C	10	anello seeger/snap ring	
224	9.7565.004 F C	10	5 rondella/washer	
225	9.1760.042 F C	10	5 x avv.el./el.st. 12V- 4A-M 6 X 1 X 18	
"	9.9730.015 F C	10	5 x " " " " 12V-12A-M 6 X 1 X 30	
226	540.5066.053 S C	1	lamiera/airtight plate	
227	520.6370.154 D C	1	piastra 6LD325 std. & 325/C std. e inson.	
"	500.6370.175 N	1	shroud pl. " " " " or denois.	
"	540.6370.118 S C	1	piastra/shroud pl. 6LD325 inson./denoised	
"	540.6370.166 N	1	" " " " 6LD360-400-400/C std.	
"	540.6370.119 S C	1	per/for 6LD360-400-400/C insonor./denoised	
			for electric starting on denoised engines	
228	530.4570.010 FV C	1	guarnizione/joint std.	
"	530.4570.011 FV C	10	per avviamento elettr./for electr.starting	

FIG. FIG.	MATRICOLA P.NO	Q.TA Q.TY	NOTE REMARKS	GR. 6 - 1.5302.145 PAG. 08
229	500.2568.086 S C	1	convogl./shroud 6LD325	std.
"	500.2569.167 N	1	"	inson./denoised
"	540.2569.058 S C	1	"	6LD360-400 std.
"	540.2569.154 N	1	"	inson./denoised
"	503.2568.087 D	1	"	6LD325/C std.
"	503.2569.168 N	1	"	inson./denoised
"	543.2569.061 D C	1	"	6LD400/C std.
"	543.2569.169 N	1	"	inson./denoised
"	530.2568.078 F AC	1	per avviamento elettr./for electr.starting	
"	540.2569.156 N	1	per avviam.elettr. su motori insonorizzati	
230	540.6370.128 S IC	1	for electric starting on denoised engines	
232	500.2568.098 S AC	1	per avviam.manov.con/senza impianto luce	
233	9.1901.032 FVIC 10	1	for hand-crank st.with/without light.syst.	
234	9.1901.030 FVIC 10	1	bullone raccordo/connection bolt	
235	5000.9374.036 S C	1	tubo da pompa al.a filtro comb.sul mot.	
"	5000.9375.011 N	1	pipe from pump to filter on eng.(mm 360)	
236	9.4670.059 FVIC 10	1	tubo da pompa al.a filtro comb.staccato	
237	9.4670.059 FVIC 10	1	pipe from pump to remote filter (mm 1035)	
238	5000.9375.240 S AC	1	guarnizione/joint	
239+	70.9180.011 S C 10	2	guarnizione/joint	
240+	9.3240.009 FV C 10	2	terminale/cable-end	
241	9.4670.059 FVIC 10	1	dado/nut	
242	9.1901.030 FVIC 10	1	guarnizione/joint	
243+	9.9790.023 F C 10	1	bullone raccordo/connection bolt	
244+	90.6000.031 S C 10	1	vite/screw M 5 X 0,8 X 7	
245+	9.3203.047 FV C 10	2	pastiglia/nut 44	
247+	.....		dado/nut	
250+	500.5680.043 S C 10	1	vedi/see fig.No. 254+...	
251+	.....		molla/spring	
252+	9.8420.002 S C 10	1	vedi/see fig.No. 254+...	
253	9.9730.010 S 10	2	spina/locating pin	
254+183+184+247+250+			vite/screw M 6 X 1 X 16	
251+252+255+256+553=			SUPPORTO LEVA REGOLATORE	
=540.8785.076 D C		1	CONTROL LEVER SUPPORT	
255+	9.1200.087 FV C 10	1	anello OR/rubber oil seal	
256+	.....		vedi/see fig.No. 254+...	
258	540.5655.081 SV C 10	1	std. & gr.elettrog./generating sets	
259+	710.2800.049 N 10	1	copiglia/cotter pin	
266+	9.7565.004 F C 10	1	rondella/washer	
267+	9.1760.007 S 10	1	bullone/bolt	
268+	500.2135.072 FV C 10	1	cappello/cap	
269+	500.6410.036 F C 10	2	piattello/retainer with half-collets	
270+	500.5755.045 FV C 10	2	molla/spring	
271+	540.6850.108 SV C	2	prigion.lato distribuzione/gear side stud	

FIG.	MATRICOLA	Q.TA	NOTE	GR. 6 - 1.5302.145
FIG.	P.NO	Q.TY	REMARKS	PAG. 09
272+	520.4730.206 N	10 1	0,55 x 6LD325-325/C	guarn.testa/head joint
"	520.4730.159 N	10 1	0,60	"
"	520.4730.207 N	10 1	0,65	"
"	520.4730.160 SV C	10 1	0,70	"
"	520.4730.208 N	10 1	0,75	"
"	520.4730.161 N	10 1	0,80	"
"	520.4730.209 N	10 1	0,85	"
"	520.4730.162 N	10 1	0,90	"
"	520.4730.210 N	10 1	0,95	"
"	520.4730.163 N	10 1	1,00	"
"	530.4730.171 SV C	10 1	0,50 x 6LD360	"
"	530.4730.180 SV C	10 1	0,55	"
"	530.4730.145 SV C	10 1	0,60	"
"	530.4730.181 SV C	10 1	0,65	"
"	530.4730.146 SV C	10 1	0,70	"
"	530.4730.182 SV C	10 1	0,75	"
"	530.4730.147 SV C	10 1	0,80	"
"	530.4730.183 SV C	10 1	0,85	"
"	530.4730.148 SV C	10 1	0,90	"
"	530.4730.184 SV C	10 1	0,95	"
"	540.4730.130 SV C	10 1	0,50 x 6LD400-400/C	"
"	540.4730.175 SV C	10 1	0,55	"
"	540.4730.122 SV C	10 1	0,60	"
"	540.4730.176 SV C	10 1	0,65	"
"	540.4730.123 SV C	10 1	0,70	"
"	540.4730.177 SV C	10 1	0,75	"
"	540.4730.124 SV C	10 1	0,80	"
"	540.4730.178 SV C	10 1	0,85	"
"	540.4730.133 DV C	10 1	0,90	"
"	540.4730.179 DV C	10 1	0,95	"
273	500.4740.018 FV C	10 1		guarnizione/upper joint
274	500.4740.025 FV C	10 1		guarnizione/lower joint
275	500.9520.046 FVIC	1		tubo protez./guard tube
276	500.1410.016 FV C	2		asta punteria/push rod
277	9.1240.004 FV C	10 1		anello seeger/snap ring
278	9.2280.050 S	10 1		x 6LD325/C-400/C cilindr./cylindr. P.T.O.
279	500.7550.006 S C	10 1		rondella/washer
280	543.1011.078 E	1		Ext.4 SAE 6LD400/C fino a./up to eng.s.No.
"	503.1011.049 S AC	1		6LD360/C-400/C da.../from eng...
281+	9.7626.048 S C	10 2		rondella/washer
282+	9.1770.083 FV C	10 2		bullone/bolt M B X 1,25 X 50
283+281+282=				BIELLA COMPLETA
=500.1526.030 F AC		1		CONNECTING ROD
284	360.1640.066 FVIC	1		bronz.biella/large end bushing std.
"	360.1640.067 F ICR	1		-0,25
"	360.1640.068 F ICR	1		-0,50
285	90.6607.001 S C	1		per avviam.el./for el.starting 12 V-4 A
286	9.9730.010 S	10 1		vite/screw M 6 X 1 X 16
287+	500.4700.094 FV C	50 1		0,30 std. & x avv.manov./handle starting
"	500.4701.003 FV C	50 1		0,20
"	500.4701.015 S C	50 1		0,10
"	500.4701.017 FV C	50 1		0,40
288	500.8675.082 F C	1		std. & avv.el./el.start.12 V-4 A & anche avv.manov.con/senza impianto luce also handle st.with/without light.system
"	5300.8676.039 S AC	1		x avviam.el./el.starting 12 V-12 A
289	9.1210.092 FV C	10 1		anello tenuta/seal ring 6LD325-360-400
"	9.1213.001 FV C	10 1		6LD325/C-400/C
290	540.5066.054 S C	1		lamiera/airtight plate

FIG. MATRICOLA Q.TA NOTE GR. 6 - 1.5302.145  
 FIG. P.NO Q.TY REMARKS PAG. 10

291	9.9790.037	FV C 10	2	vite/screw M 6 X 1 X 8
292	9.7565.007	F C 10	2	rondella/washer
293	540.6480.041	D	1	pignone per avv.man.con/senza imp.luce. handle st.with/without ligh.system pinion
294	5000.6275.093	N	10	1 per avviamento elettr./for el.starting
296	9.4670.016	FV C 10	1	guarnizione/joint
297	9.4670.016	FV C 10	1	guarnizione/joint
301	500.6585.032	FV C	1	pompa alimentazione/feed pump
303	500.7200.048	SV C	1	puntalino/drive rod
304+	255.6700.012	S C	1	portina/pan
305+	560.4580.047	FVIC	50	1,00
"	560.4580.049	FV C 10	1	0,50
"	560.4580.050	FV C 10	1	0,80
306+	9.6780.007	S	10	2 prigioniero/stud M 8 X 20 (32)
308	9.3203.047	D	1	dado/nut
309	.....			

310+311+312=  
 =500.4936.064 S IC 1 INGRANAGGIO REGOLATORE/SPEED GOVERN.GEAR  
 per gruppi elettrog./for generating sets

311+	9.8400.073	N	10	2 spina/taper pin
312+	.....			vedi/see fig.No. 310+...
315	500.4896.002	S	1	gruppo campana regol./governor bell
316	9.9810.002	D C 10	2	vite/screw
317	9.9430.023	S C 10	1	spina/localizing pin
318	9.8245.010	F	10	6 sfera/ball
320+	9.2200.013	S C 10	1	chiavetta/key std.
"	9.2280.061	D C 10	1	per gruppi elettrog./for generating sets
321	9.1585.029	S C 10	1	per gruppi elettrog./for generating sets
322	9.1240.077	FV C 10	1	per gruppi elettrog./for generating sets
324+	500.3855.007	D C	1	1 flangia/flange 6LD325-360-400
"	503.3855.009	D C	1	6LD325/C-400/C
325+	520.9652.040	FVACR10	1	valvola aspirazione/inlet valve
326+	500.3430.070	FVAC 10	2	fondello/cup
327+	520.9685.051	FVACR10	1	valvola scarico/exhaust valve
329+	540.6850.106	SV C	2	prigion.lato volano/flywheel side stud
330	9.2280.047	F	10	1 chiavetta/key
331	500.1011.084	S BC	1	fino a.../up to eng.s.No... x 6LD400
"	500.1011.052	F AC	1	da.../from eng.s.No... x 6LD325-360-400
332	503.1011.053	D AC	1	albero camme/camshaft 6LD325/C-400/C
333	9.9765.076	D C 10	1	vite/screw 6LD325-360-400
334	9.1585.004	S C	1	boccola/bushing 6LD325/C-400/C
335+	9.2280.047	F	10	1 per albero/for shaft std. conic.
"	9.2280.052	D C 10	1	" " EXT. a 3
336+	500.9000.069	S	10	2 tappo/expansion plug

337+335+336+338=  
 =500.1050.115 F IC 1 ALBERO A GOMITO/CRANKSHAFT  
 x 6LD325-360-400 std.conic. (mm 300)

337+336+338=  
 =500.1050.126 S IC 1 x 6LD325-360-400 EXT. 4 (mm 383,4)

338+	9.2280.048	FV C 10	1	chiavetta lato volano/flywheel side key
339	500.1257.008	FV C 10	1	anello reggispira/thrust washer
340	500.1611.012	FVIC	1	bronz.l.volano/flywheel side bear. std.
"	500.1611.013	F ICR	1	" " -0,50
"	500.1611.014	F ICR	1	" " -1,00
342	9.7565.007	F C 10	4	rondella/washer
343	9.1770.002	FV	10	4 bullone/bolt std. M 8 X 1,25 X 16
"	9.1770.005	F	10	4 x avv.el./el.starting M 8 X 1,25 X 22
"	9.1770.056	S C 10	4	x avv.manov./handle starting

FIG.	MATRICOLA	Q.TA	NOTE	GR. 6 - 1.5302.145
FIG.	P.NO	Q.TY	REMARKS	PAG. 11
344	9.9790.037	FV C 10	6 bullone/bolt M 6 X 1 X 8	
345	9.1760.032	S C 10	2 vite/screw M 6 X 1 X 14	
346	9.7625.092	D C 10	2 rondella/washer	
347	9.7555.004	FV C 10	2 rondella/washer	
348	9.3240.008	FV 10	2 dado/nut	
365	9.3240.066	FV C 10	1 dado/nut	
366	9.7565.011	F C 10	1 rondella/washer	
367+318+368+371=			REGOLATORE A SFERE COMPLETO	
=540.7362.126			S C 1	SPEED GOVERNOR ASS.Y
367	540.4936.047	S C	1 ingranaggio/gearwheel	
368	540.2086.081	D I	1 campana regolatore/governor bell	
369	9.9730.016	DV C 10	4 vite/screw M 6 X 1 X 35	
370	9.7565.004	F C 10	4 rondella/washer	
371	500.1160.011	DV C 10	1 anello/circlip	
372	9.9732.063	S AC 10	9 vite/screw M 8 X 1,25 X 35	
373	9.9730.028	F 10	1 vite/screw M 8 X 1,25 X 30	
374	530.1611.018	FVIC	1 bronz.l.distrib./gear side bearing std.	
"	530.1611.019	F ICR	1	-0,50
"	530.1611.020	F ICR	1	-1,00
375	9.1240.077	FV C 10	1 per gruppi elettrog./for generating sets	
376	9.1585.029	S C 10	1 per gruppi elettrog./for generating sets	
377+	276.8460.055	D C 10	2 spina/taper pin	
378	9.1770.039	S C 10	1 bullone/bolt M 8 X 1,25 X 28	
379	9.7625.060	S C 10	1 rondella/washer	
380	500.1257.008	FV C 10	1 anello reggispinta/thrust washer	
381+	9.2280.050	S 10	1 chiavetta per albero/key for shaft EXT. 4	
382+335+336+338=			x 6LD325-360-400 (motopompe/pumping units)	
=500.1050.118			S IC 1	EXT. A 3 (mm 391)
382+336+338+381=				
=500.1050.117			S IC 1	EXT.4 SAE J 609 A (mm 365.5)
382+336+338=				
=500.1050.121			S IC 1	EXT.9 SAE J 609 A (mm 365,5)
=500.1050.127			S IC 1	filetto/thread mm 16 EXT.9 SAE J 609 A (mm 366,2) filetto/thread mm 26,2
383	9.1760.001	FV 10	2 bullone/bolt M 6 X 1 X 10	
384	9.7565.004	F C 10	2 rondella/washer	
385	9.1585.058	S	2 boccola/bushing	
387	9.8430.019	S 10	1 spina/locating pin	
388	5000.8965.031	D	1 tappo/plug	
389	9.1202.016	FV C 10	1 anello/ring	
390	270.5801.027	D A	1 molla/spring	
391	500.7900.045	S A	1 scodellino/cup	
392	9.1240.041	S 10	1 anello seeger/snap ring	
393	270.5455.006	S	1 manovella/handle 6LD325-360-400	
"	715.5455.014	S C	1 " 6LD325/C-400/C	
394	9.7565.007	F C 10	1 rondella/washer	
395	5000.8506.005	N	1 squadretta/angle bracket	
396	5000.8506.007	N	1 squadretta/angle bracket	
401	9040.2615.021	F C	1 coperchio/cover	
402	9040.6612.063	S AC	1 spia olio/oil warning	
403	9040.6612.064	S AC	1 spia batteria/battery warning	
404	9040.5175.119	F AC 10	2 lampadina/lamp	
412+	9.1213.056	FVIC 10	1 anello tenuta/seal ring 6LD325-360-400	

FIG. FIG.	MATRICOLA P.NO	Q.TA Q.TY	NOTE REMARKS	GR. 6 - 1.5302.145 PAG. 12
413+	9.3030.028	FV C 10	1	cuscinetto/ball bearing std.
"	9.3030.046	S	1	per portina con giochi assiali ridotti for cover case with reduced rad.clearance
414+	500.4601.002	FV C 10	1	guarnizione/joint 0,30
"	500.4601.020	FV C 10	1	" 0,20
415+	9.6780.076	FV C 10	5	prigioniero/stud M 8 X 18 (34)
416	500.9060.011	DVBC	1	tappo per raccordo/plug preset for connect
"	500.9060.012	DVAC	1	"
417	9.4670.062	DVRC 10	1	guarnizione/joint
"	9.4670.058	FVAC 10	1	"
418	9.1760.001	D BC 10	1	bullone/bolt M 6 X 1 X 10
"	9.1770.001	D AC 10	1	" M 8 X 1,25 X 12
419+336+338= =503.1050.116	S IC	1	ALBERO A GOMITO/CRANKSHAFT std. x 6LD325/C-400/C (mm. 264)	
420+597= =9040.6745.031	FVAC	1	PRESSOSTATO COMPLETO PRESSURE OIL SWITCH	
420	2760.5040.098	SV C	1	interr.a press.d'olio/switch by press.oil
421	276.4670.014	SV C 10	1	per pressostato/pressure oil joint
"	9.4670.061	FVIC 10	1	per interrutt./switch by press.oil joint
422	292.5840.065	F	1	motorino avviam./start engine 12 V
423	540.2690.145	S C	1	coperchio/cover
424	293.4970.012	D A	1	ingranaggio/spurwheel
425	500.7885.026	S I	1	scatola/case
426	9.7565.007	F C 10	3	rondella/washer
427	9.1770.005	F	10	3 bullone/bolt M 8 X 1,25 X 22
428	292.8335.073	D	10	1 spessore/spacer
429	530.3790.040	S A	1	1 flangia/flange
430	9.3240.018	FV	10	1 dado/nut
433	5300.8546.028	F AC	1	1 staffa/brace (per mot./for st.eng.Bosch)
434	9.7565.007	F C 10	1	1 rondella/washer
435	9.7625.012	FV C 10	1	1 rondella/washer
436	9.1770.004	F C 10	1	1 bullone/bolt M 8 X 1,25 X 20
437	9.7565.004	F C 10	2	2 rondella/washer
438	9.1760.003	F	10	2 bullone/bolt M 6 X 1 X 12
442	2830.5040.004	SV C	1	1 interruttore/switch key
"	2760.5041.020	FV C	1	" " Bosch
451	5000.8760.044	N	1	1 supporto/support
452	9.7625.012	FV C 10	2	2 rondella/washer
453	9.3240.018	FV	10	2 dado/nut
454	9.7565.007	F C 10	2	2 rondella/washer
455	9.1770.006	S	10	2 bullone/bolt M 8 X 1,25 X 25
456+503= =2830.3730.036	FV C	1	FILTRO COMBUSTIBILE ESTERNO EXTERNAL FUEL FILTER	
457	9.4670.016	FV C 10	2	2 guarnizione/joint
458+412+413= =500.6646.075 =5000.6646.099	F C D C	1 1	PORTINA/CASE COVER 6LD325-360-400 std. per giochi ass.rid./for red.radial clear.	
459+507+508= =500.6647.045 =5000.6647.046	S IC S IC	1 1	PORTINA DI FONDO/OIL PAN std. x 6LD325-325/C-360 std. x 6LD400-400/C & profonda/deep x 6LD325-325/C-360	
460+	500.4601.003	FV C 50	1	guarnizione/joint
461+	500.4776.016	S C 10	1	guarnizione/joint

FIG.	MATRICOLA	Q.TA	NOTE	GR. 6 - 1.5302.145
FIG.	P.NO	Q.TY	REMARKS	PAG. 13
462	500.1745.001 S C	1	bulbo/oil pipe std. x 6LD325-325/C-360	
-	5000.1745.002 D C	1	std. x 6LD400-400/C & x	
			port.prof.su/deep pan on 6LD325-325/C-360	
463	500.2175.019 FV C	1	cartuccia olio/oil filter element	
464	560.9680.013 SV C	1	valvola pressione/pressure oil valve	
465	500.9070.012 S C	1	tappo valvola/valve cap	
466	9.4670.021 FV C	10	guarnizione/joint	
467	500.5755.049 FV C	10	molla/spring	
468	500.5725.032 FV C	10	molla/spring	
469	9.1200.016 FV C	10	anello OR/rubber oil seal	
470	500.9060.008 FV C	1	tappo filtro/filter cap	
471	500.6427.035 F C	2	piede/engine mount std. x 6LD325-325/C-360	
472	5000.7330.075 S BC	1	per pressostato/for pressure switch	
▪	2790.7330.019 D A	1		
▪	5000.7330.138 D C	1	per interruttore/for switch by press.oil	
473	9.4670.062 DVBC	10	guarnizione/joint	
▪	9.4670.058 FVAC	10		
474	9.1901.058 FVIC	10	bullone raccordo/connection bolt M 6	
▪	9.1901.048 SVAC	10	M 8	
477	9.3240.066 FV C	10	dado/nut	
478	9.7565.011 F C	10	rondella/washer	
479	9.6800.020 F	10	prigioniero/stud M 10 X 35 (50)	
480	276.2145.014 FVAC	1	cappuccio/rubber cap	
481+	9.1210.030 FV C	10	anello tenuta/seal ring 6LD325/C-400/C	
482+413+481=			PORTINA/CASE COVER 6LD325/C-400/C	
	=503.6646.076 D C	1	std.	
483	9.3000.040 S C	1	cuscinetto/ball bearing 6LD325/C-400/C	
484	9.1770.009 D C	10	bullone/bolt M 8 X 1,25 X 35	
485	5300.8546.031 S AC	1	per mot.avv./for start.eng. Femsu/Marelli	
503+	2830.2175.045 FVAC	1	cartuccia combustib./fuel filter element	
504	5000.9375.020 D C	1	tubo da filtro comb.staccato a pompa in.	
			pipe from remote filter to pump (mm 1036)	
▪	5000.9375.079 N	1	tubo da filtro comb.sul mot.a pompa in.	
			pipe from f.filter on engine to inj.pump	
505	9.4670.016 FV C	10	guarnizione/joint	
506	9.1901.032 FVIC	10	bullone raccordo/connection bolt	
507+	9.4670.013 FV C	10	guarnizione/joint	
508+	9.8965.032 S AC	10	tappo/oil drain plug	
509	9.4780.005 S	10	prigioniero/stud M 8 X 18 (30)	
510	9.7565.007 F C	10	rondella/washer	
511	9.3240.016 FV C	10	dado/nut	
512	5000.8506.009 N	1	squadretta/angle bracket	
513	5000.8506.008 N	1	angle bracket	
514	276.6740.088 FVAC	10	presa regol./inlet volt.reg. Saprisa	
▪	276.6740.089 SVAC	10	Ducati	
▪	276.6740.090 SVAC	10	x reg.Ducati con spia c.b./with c.b.Light	
515+	9.3030.028 FV C	10	cuscinetto/hall bearing std.	
▪	9.3030.046 S	1	per portina con giochi assiali ridotti	
			for cover case with reduced rad.clearance	
516+412+515+562=			x 6LD325-360-400 FLANG. A & B SAE J 609 A	
	=5000.6646.097 D C	1	std.	
	=5000.6647.001 N	1	con giochi ass.ridotti/with red.clearance	
517+	500.4500.091 FV C	10	guarnizione/joint	
518	9.7565.007 F C	10	rondella/washer	
519	9.3240.019 FV C	10	dado/nut	
521	9.9790.037 FV C	10	vite/screw	
534	9.7625.010 FV C	10	rondella/washer	



FIG. MATRICOLA Q.TA NOTE GR. 6 - 1.5302.145  
 FIG. P.NO Q.TY REMARKS PAG. 14

535	9.1770.004	F C	10 10	bullone/bolt M 8 X 1,25 X 20
536	5000.6428.065	S C	2	piede/eng.mount std. 6LD400-400/C & x port.prof.su/deep pan on 6LD325-325/C-360
537	5000.6428.036	D C	1	piede lato scarico/exhaust side mount
	5000.6428.037	D C	1	piede lato aspirazione/inlet side mount
539	9.9730.023	N	2	vite/screw M 8 X 1,25 X 10
540	2760.7362.027	FVIC	1	regol.tensione/voltage regul:12 V-12 A
	9040.7362.066	FVIC	1	" 12 V-12 A - spia c.b./c.b.light
541	9.1770.004	F C	10 2	bullone/bolt M 8 X 1,25 X 20
542	9.7565.007	F C	10 2	rondella/washer
543	9.3240.018	FV	10 2	dado/nut
544	530.3902.034	S BC	1	flangia per avv.el./flange for el.start.
545	500.5462.089	F IC	1	marmitta/muffler std. (avv.fune/rope st.)
	5000.5462.094	S C	1	marmitta pred.per prot.(mot.con avv.fune) muffler suitable for guard (rope start.)
546	5000.6927.048	D C	1	protezione/guard
547	530.3700.132	FV C	1	filtro a secco/dry air cleaner std.
548	530.2175.050	FV C	1	cartuccia filtro aria/air cl.element
552	9.3203.047	FV C	10 5	dado/nut
553+	.....			vedi/see fig.No. 254+...
554	540.5801.087	SV C	10 1	molla/spring std.
	540.5801.196	D C	10 1	" " special mini-voiture
555	540.6140.135	DV C	1	perno/pin std.
	5400.6140.136	D C	1	per gruppi elettrog./for generating sets
556+259+266+267= =540.5200.176	S C	10 1		LEVA COMANDO POMPA INIEZIONE INJECTION PUMP CONTROL LEVER
557+320+324= =540.6605.049	SV C	1		POMPA OLIO/LUB.OIL PUMP
=5400.6605.050	S C	1		x 6LD325-360-400 std.
=543.6605.052	D C	1		x 6LD325-360-400 gr.elettrog./gen.sets x 6LD325/C-400/C std.
559	520.2380.177	FV C	1	cilindro/cylinder 6LD325-325/C
	530.2380.172	FV C	1	" " 6LD360
	540.2380.132	FV C	1	" " 6LD400-400/C
560+245+246+271+304+ 305+306+329+377+415= =520.1510.216	D C	1		BASAMENTO COMPLETO CRANKCASE
=540.1510.171	S C	1		std. x 6LD325-325/C
=5400.1510.181	D C	1		std. x 6LD360-400-400/C
=5400.1510.260	N	1		x el.magnet.comando/control stop x disp. -REN- /preset for -REN- device
561	9.9732.047	D C	10 1	vite/screw M 12 X 1,5 X 20
565	9.1760.001	FV	10 4	bullone/bolt M 6 X 1 X 10
566	9.9790.037	FV C	10 1	vite/screw
567	260.5390.006	S C	10 1	manicotto/rubber sheating
569	9.9731.030	D	10 2	vite/screw M 8 X 1,25 X 12
570+	500.4500.091	FV C	10 1	guarnizione/joint
571+	9.7626.054	S AC	10 1	rondella/washer
572	9.3203.045	N	10 2	dado/nut
574	5000.6010.066	N	1	pattino/guard pad
575	530.3526.097	N	4	distanziale/spacer
576	9.7625.012	FV C	10 4	rondella/washer
577	9.1770.007	F C	10 4	bullone/bolt
578	5000.1213.143	N	10 1	anello/ring
579	5000.6495.029	N	1	pistoncino/plunger
580	9.1202.013	FV C	10 1	anello/ring
581	5000.5625.006	N	10 1	molla/spring
582	5000.3902.074	N	1	flangia f.olio est./ext.oil filt.flange

FIG.	MATRICOLA		Q.TA	NOTE	GR. 6 - 1.5302.145
FIG.	P.NO		Q.TY	REMARKS	PAG. 15
583	276.4670.014	SV C	10	1	guarnizione/joint
584	9.8965.003	FV C	10	1	tappo/plug
585	9.4670.058	FV C	10	1	guarnizione/joint
586	9.9732.074	S C	10	2	vite/screw M 8 X 1,25 X 20
587	9.4670.039	FV C	10	1	guarnizione/joint
588	9.8965.021	S C	10	1	tappo/plug
589	904.2175.040	FV C		1	cartuccia olio/extern.oil filter element
590	9.4670.061	FVIC	10	4	guarnizione/joint
591	5600.5953.048	N	10	4	nipplo/nipple
592	8320.9485.029	S C		2	tubo olio/oil pipe (mm 544)
*	5000.9485.081	S C		2	(mm 270)
593	276.7330.066	N		1	raccordo/connection
594	5000.9220.028	N		1	testina/oil filter head
595	5000.3902.129	N		1	flangia f.olio stacc./remote oil f.flange
597+	3600.6491.013	FVAC		1	pipetta/pipe elbow
598	273.7300.057	FV C	10	1	raccordo/connection
599	9.3630.008	F C	10	1	fascetta/clamp
607	9040.2900.069	F C		1	cruscotto/dashboard
608	9040.2900.070	F C		1	cruscotto/dashboard
609	2760.2750.111	F C		1	coperchio/switch key cover
610	2760.5450.009	FV C		1	manometro olio/pressure gauge
614	530.5460.188	F AC		1	marm.per mot.con avv.el./el.st.muffler
*	5300.5460.216	S C		1	marmitta insonorizz./denoised muffler
*	5000.5460.228	N		1	marmitta insonor.predisp.per protezione denoised muffler preset for muffler guard
628	360.2900.064	S C		1	cruscotto/dashboard
629+	500.5496.113	SVAC		1	massa filtrante/filtering elem. diam.=124
630+	276.4115.048	F C	10	2	gancio/hook
631+	.....				vedi/see fig. No. 9+...
632	500.7301.006	DV C	10	1	raccordo/connection
633	260.4650.037	DV C	10	1	guarnizione/joint
634+	276.2135.056	N	10	1	cappellotto/cap
635	540.2670.022	N		1	coperchio puleggia/pulley cover
636	9.3203.050	N	10	1	dado/nut
637	9.1760.093	N	10	1	bullone/bolt M 6 X 1 X 85
638	5000.6927.109	N A		1	protezione marmitta/muffler guard
639	9.9790.039	FV C	10	3	vite/screw M 6 X 1 X 12
43+71+79+147+272+				SERIE GUARNIZIONI	
287+305+414+460+461+				GASKET SET	
517+570=					
	=520.8180.092	FV CR		1	x 6LD325-325/C
	=530.8180.082	FV CR		1	x 6LD360
	=540.8180.063	SV CR		1	x 6LD400-400/C

DISVI/RICA

\*\*\*\*\*

21.11.1986

\*\*\*\*\*

DESCRIZIONI NON IMPEGNATIVE  
SUBJECT TO MODIFICATIONS

aggiornata al 21.11.1986

MATERIALE DI RETTIFICA  
GRINDING WORKSHOP PARTS LIST  
MATERIEL POUR RECTIFIEUR

GR. 6 CS  
PAG.16

MOTORI-ENGINES-MOTEURS GR. 6 Cilindro staccato/Detacheable cylinder

FIG. NO.	MATRICOLA PART NO.	Q.TA Q.TY	NOTE REMARKS
80+	500.4845.071 FVICR10	1	guida v.asp./inlet v.guide std.
"	500.4845.075 FVICR10	1	" " " +0,50
82+	500.4845.030 FV CR10	1	guida v.scar./exhaust v.guide std.
"	500.4845.052 FV CR10	1	" " " +0,50
141+	283.8000.036 FVACR10	1	sede v.aspiraz./inlet v.seat
142+	283.8000.037 FVACR10	1	sede v.scarico/exhaust v.seat
151+	520.8211.079 F CR10	1	+0,50 x 6LD325-325/C serie segm./ring set
"	520.8211.080 F CR10	1	+1,00 " " "
"	530.8211.046 F CR10	1	+0,50 x 6LD360 " " "
"	530.8211.047 F CR10	1	+1,00 " " "
"	540.8211.017 F CR10	1	+0,50 x 6LD400-400/C " " "
"	540.8211.018 F CR10	1	+1,00 " " "
221+151+222+223=			PISTONE COMPLETO (TASSATIVO 3 CAVE) PISTON ASS.Y (MUST BE 3 GROOVES)
	=520.6500.319 F CR	1	+0,50 x 6LD325-325/C
	=520.6500.320 F CR	1	+1,00 " " "
	=530.6500.239 F CR	1	+0,50 x 6LD360 " " "
	=530.6500.240 F CR	1	+1,00 " " "
	=540.6500.151 F CR	1	+0,50 x 6LD400-400/C
	=540.6500.152 F CR	1	+1,00 " " "
284	360.1640.067 F ICR	1	bronz.biella/large end bushing -0,25
"	360.1640.068 F ICR	1	" " " -0,50
325+	520.9652.040 FVACR10	1	valvola aspirazione/inlet valve
327+	520.9685.051 FVACR10	1	valvola scarico/exhaust valve
340	500.1611.013 F ICR	1	bronz.l.volano/flywheel side bear. -0,50
"	500.1611.014 F ICR	1	" " " -1,00
374	530.1611.019 F ICR	1	bronz.l.distrib./gear side bearing -0,50
"	530.1611.020 F ICR	1	" " " -1,00
43+71+79+147+272+ 287+305+414+460+461+ 517+570=			SERIE GUARNIZIONI GASKET SET
	=520.8180.092 FV CR	1	x 6LD325-325/C
	=530.8180.082 FV CR	1	x 6LD360
	=540.8180.063 SV CR	1	x 6LD400-400/C