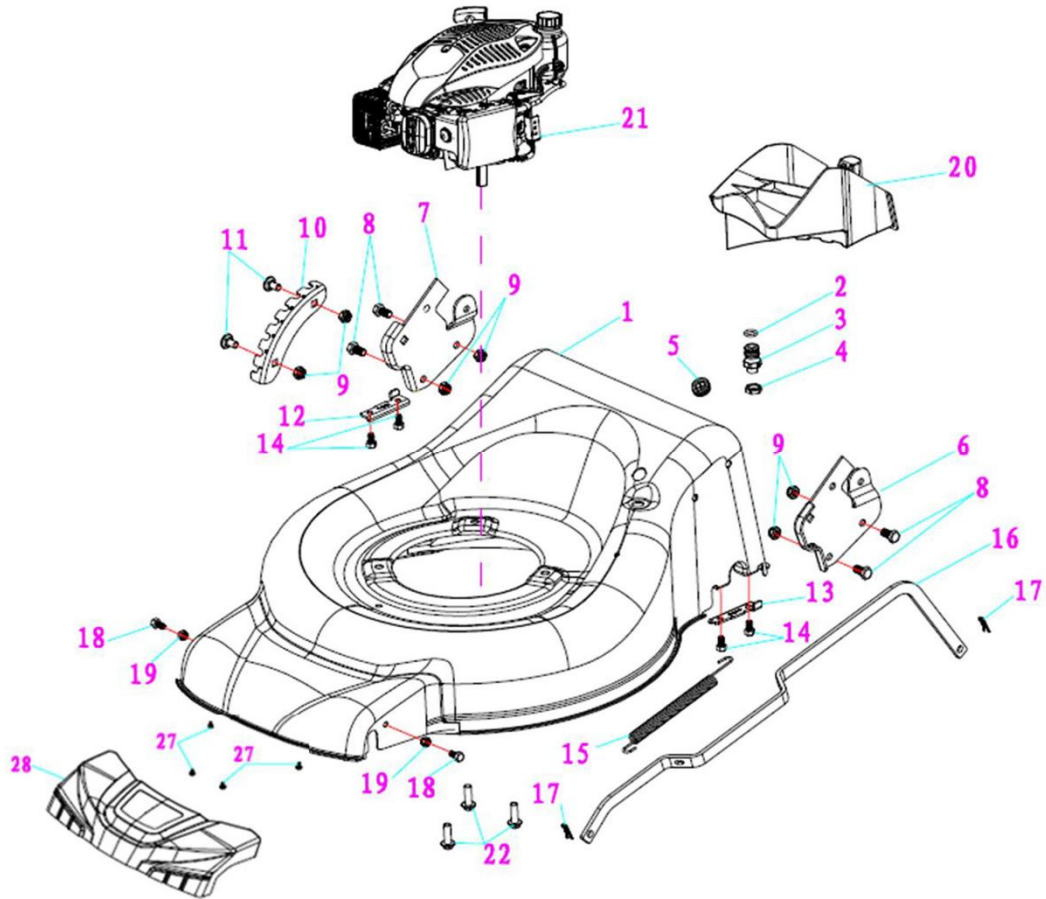


V 46 E (2017)



No	Code	Name	Qty	No	Code	Name	Qty
1		deck welding assy.	1				
2		"O" ring	1				
3		inlet	1				
4		Pipe connector nut	1				
5		cabler stopper	1				
6		left handle bracket	1				
7		left handle bracket	1				
8		Hexagon head bolts	4				
9		Hex lock nut	6				
10	037193	height adjustment board	1				
11		Half round head square neck bolts	2				
12		rear drive right bracket	1				
13		rear drive left bracket	1				
14		Hex tapping screws	4				
15	037169	Pull Spring for Pull Rod	1				
16	037194	Height Adjustment Pull Rod	1				
17		R type pin	2				
18		Bolt	2				
19		Self-locking nut	2				
20	037195	mulching plug	1				
21		petrol engine	1				
22	049377	Hex flange bolts	3				
27		Phillips flat head self tapping screw	4				
28		front mask	1				









EXPLODED PARTS LIST

Year: 2017

Page(s): 7/7

V 46 E (2017.)

1	037219	Blade Adapter Assy	
2	037215	Double-edge blade	
3		wheel assy.	
4		outer cover of hub	
5	049383	wheel assy.	
6	040456	outer cover of hub	

QUICK WEAR PARTS