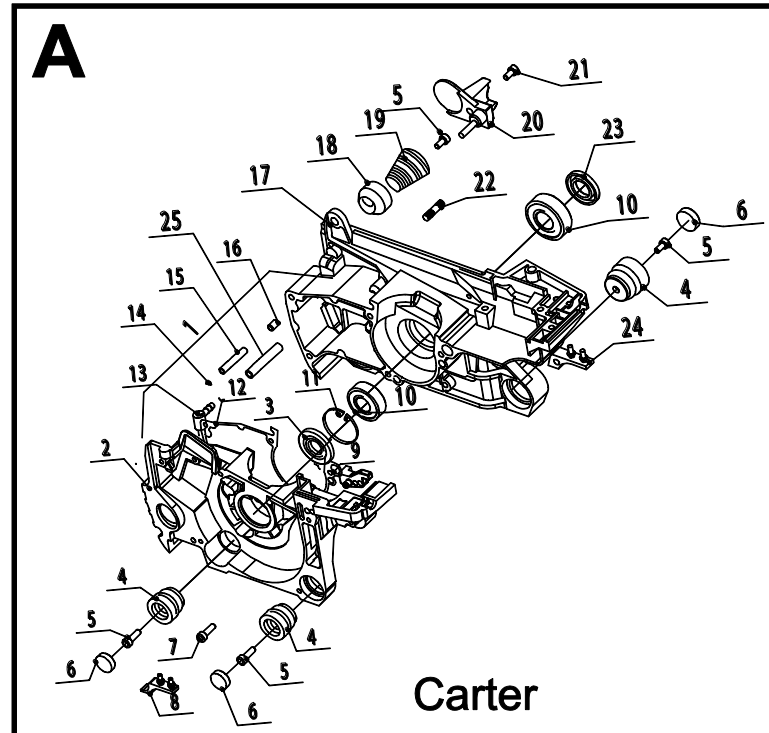
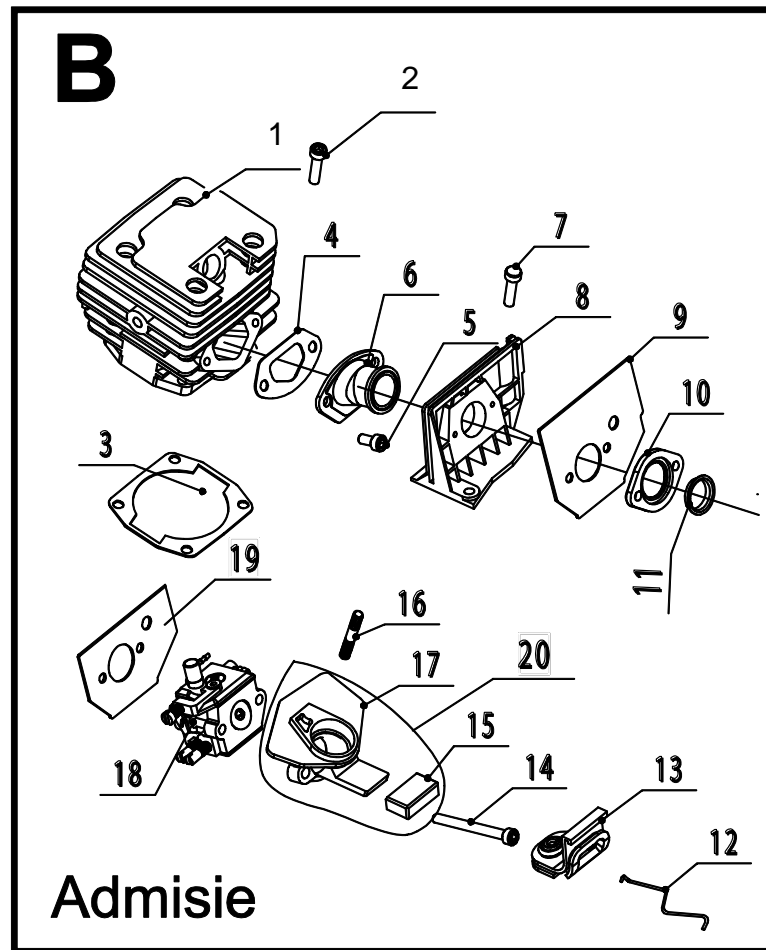


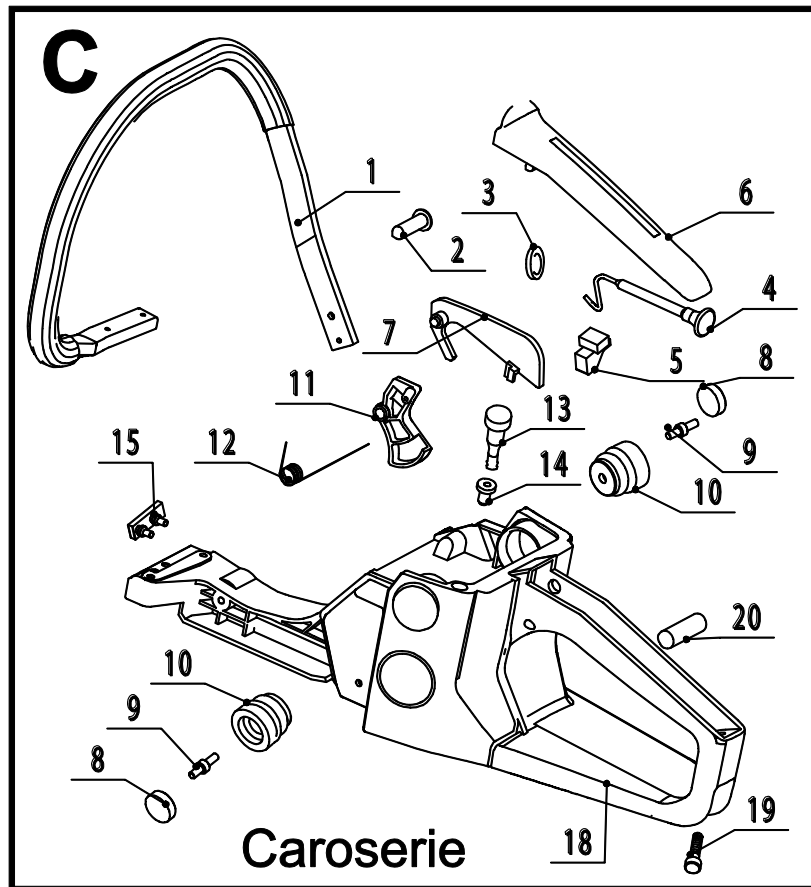
DOCUMENTATIE TEHNICA MOTOFERASTRAIE DAC 455, DAC 505



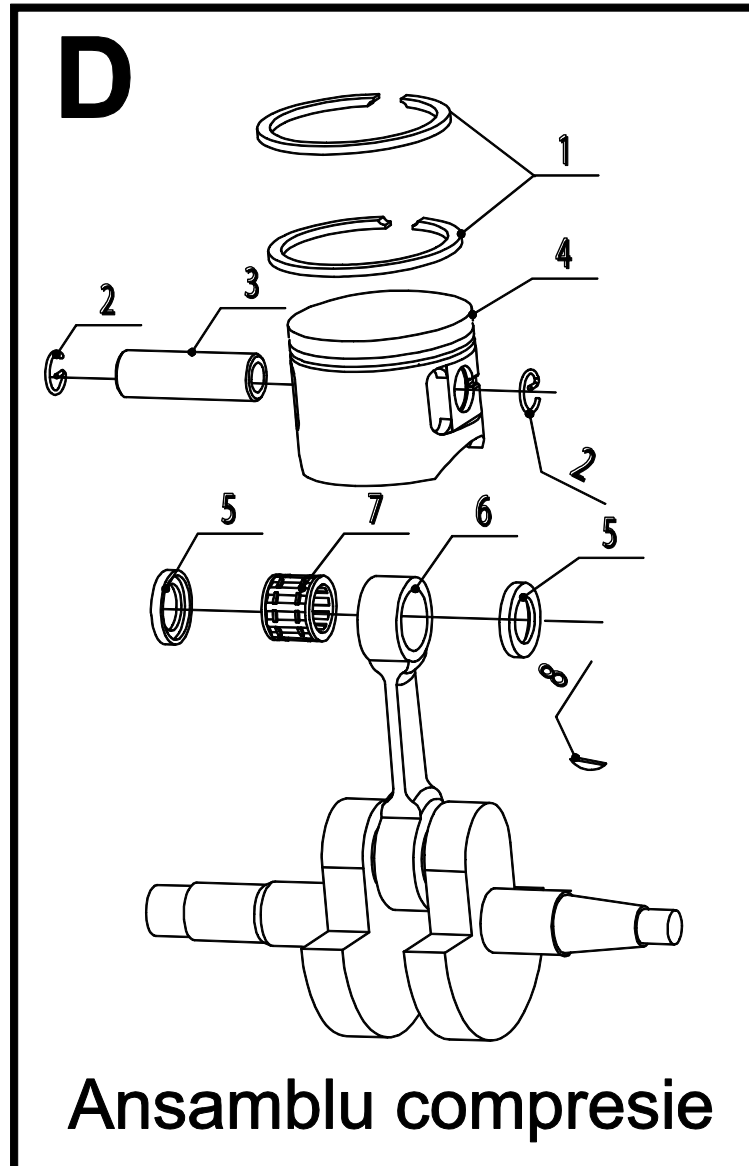
Cod	Cod intern	Denumire	Cant.
A01	ps455-a01	crankcase assy	1
A02	ps455-a02	left case	1
A03	ps455-a03	oil seal(L)	1
A04	ps455-a04	damper	3
A05	ps455-a05	screwST4.8×16	4
A06	ps455-a06	cap(1)	3
A07	ps455-a07	screw M5×30	5
A08	ps455-a08	stopper	1
A10	ps455-a10	bearing 6202	2
A11	ps455-a11	snap ring 35	1
A12	ps455-a12	crank case gasket	1
A13	ps455-a13	elbow	1
A14	ps455-a14	vacuum pipe clip	1
A15	ps455-a15	vacuum pipe	1
A16	ps455-a16	locating pin 6×9	3
A17	ps455-a17	right case	1
A18	ps455-a18	spring body	1
A19	ps455-a19	spring	1
A20	ps455-a20	china catcher	1
A21	ps455-a21	screw M5×14	1
A22	ps455-a22	screw M8×26	2
A23	ps455-a23	oil seal(R)	1
A24	ps455-a24	stopper	1
A25	ps455-a25	pipe	1



Cod	Cod intern	Denumire	Cant.
B01	ps455-b01	cylinder ϕ 45	1
	ps455-b01a	cylinder ϕ 43	1
B02	ps455-b02	screw M5x20	4
B03	ps455-b03	cylinder gasket	1
B04	ps455-b04	inter gasket	1
B05	ps455-b05	screw M5x10	2
B06	ps455-b06	inlet pipe	1
B07	ps455-b07	screw M5x14	2
B08	ps455-b08	carburetor brcket	1
B09	ps455-b09	carburetor gasket	1
B10	ps455-b10	carburetor flange	1
B11	ps455-b11	inlet pipe guide	1
B12	ps455-b12	throttle rod	1
B13	ps455-b13	dust shield	1
B14	ps455-b14	screw M5x50	2
B15	ps455-b15	damper	1
B16	ps455-b16	screw AM5x32	1
B17	ps455-b17	manifold	1
B18	ps455-b18	carburetor	1
B19	ps455-b19	under carburetor gasket	1
B20	ps455-b20	manifold assy	1

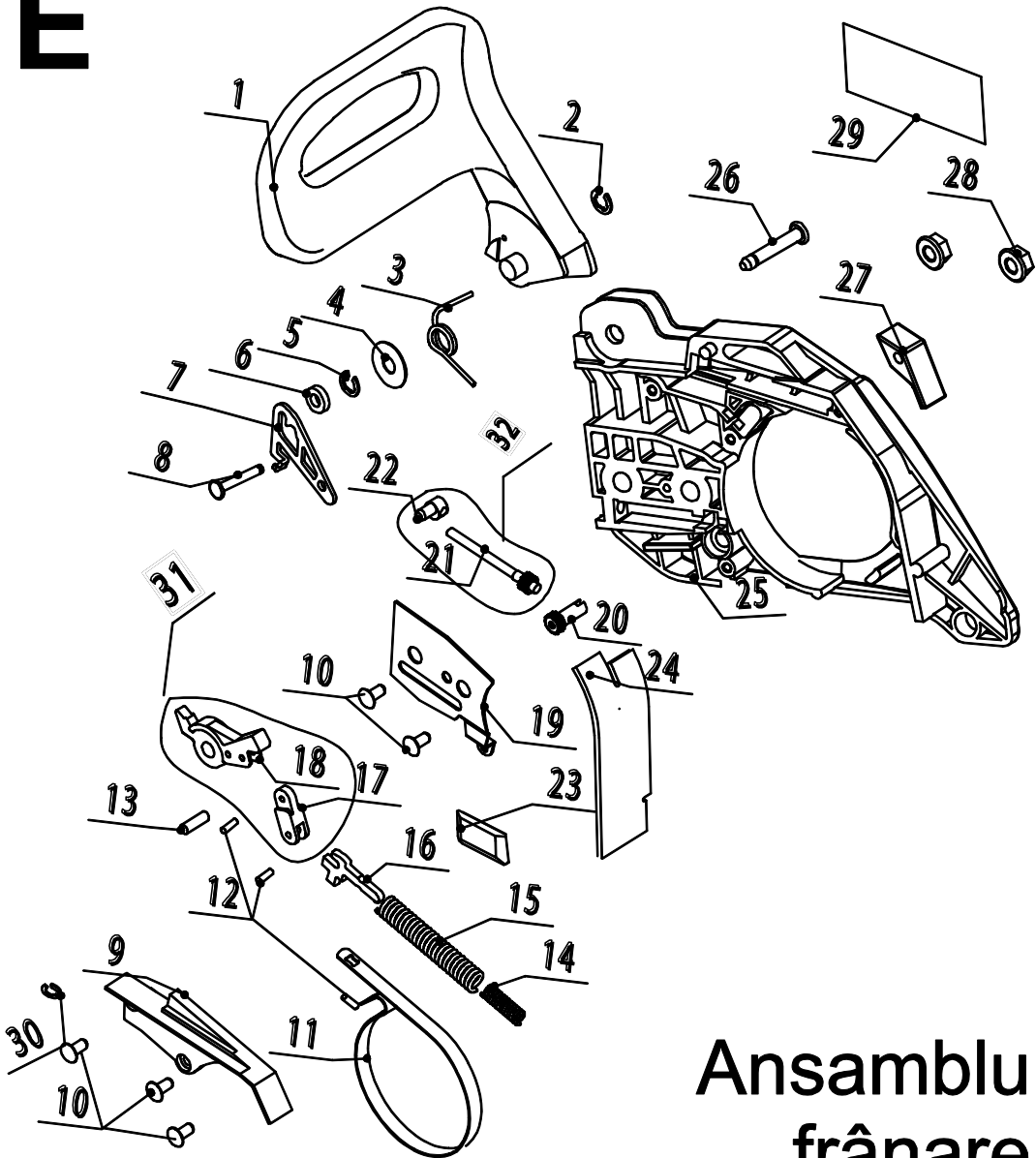


Cod	Cod intern	Denumire	Cant.
C01	ps455-c01	frond handle comp	1
C02	ps455-c02	screw ST4.8×16	4
C03	ps455-c03	choke rod damper	1
C04	ps455-c04	choke rod	1
C05	ps455-c05	damper	1
C06	ps455-c06	read handle cover	1
C07	ps455-c07	throttle interlock arm	1
C08	ps455-c08	cap(1)	2
C09	ps455-c09	retaining set screw	2
C10	ps455-c10	damper	2
C11	ps455-c11	throttle lever	1
C12	ps455-c12	throttle spring	1
C13	ps455-c13	equalization body	1
C14	ps455-c14	washer-rubber	1
C15	ps455-c15	stopper	1
C18	ps455-c18	fuel tank	1
C19	ps455-c19	screw ST4.8×19F	1
C20	ps455-c20	pin6×24	1



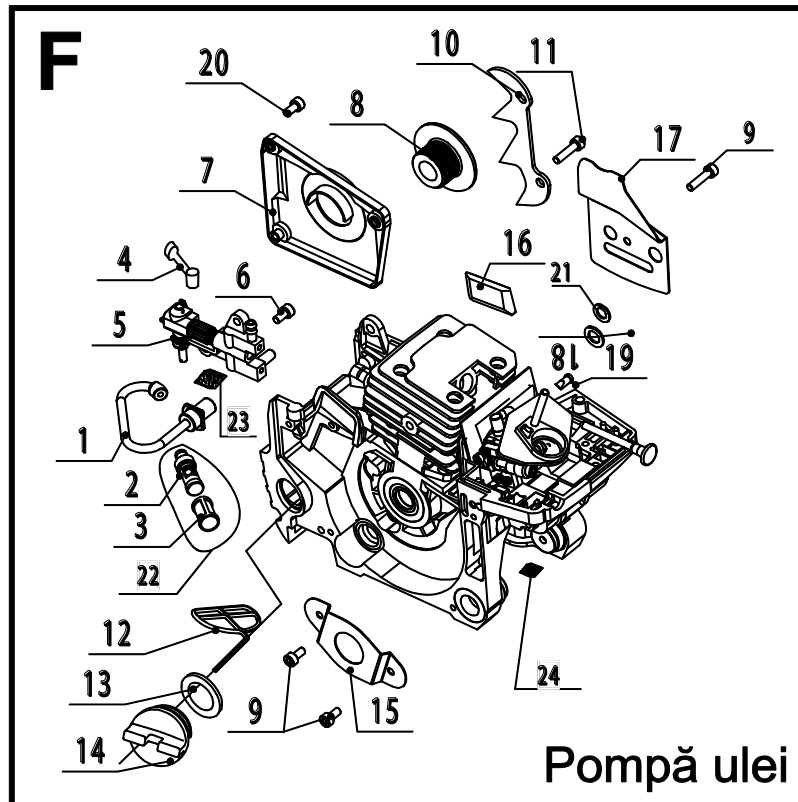
Cod	Cod intern	Denumire	Cant.
D01	ps455-d01	piston ring ϕ 45	2
	ps455-d01a	piston ring ϕ 43	2
D02	ps455-d02	piston retainer	2
D03	ps455-d03	piston pin	1
D04	ps455-d04	piston ϕ 45	1
	ps455-d04a	piston ϕ 43	1
D05	ps455-d05	washer	2
D06	ps455-d06	crankshaft comp	1
D07	ps455-d07	bearing	1
D08	ps455-d08	key 3x10	1

E

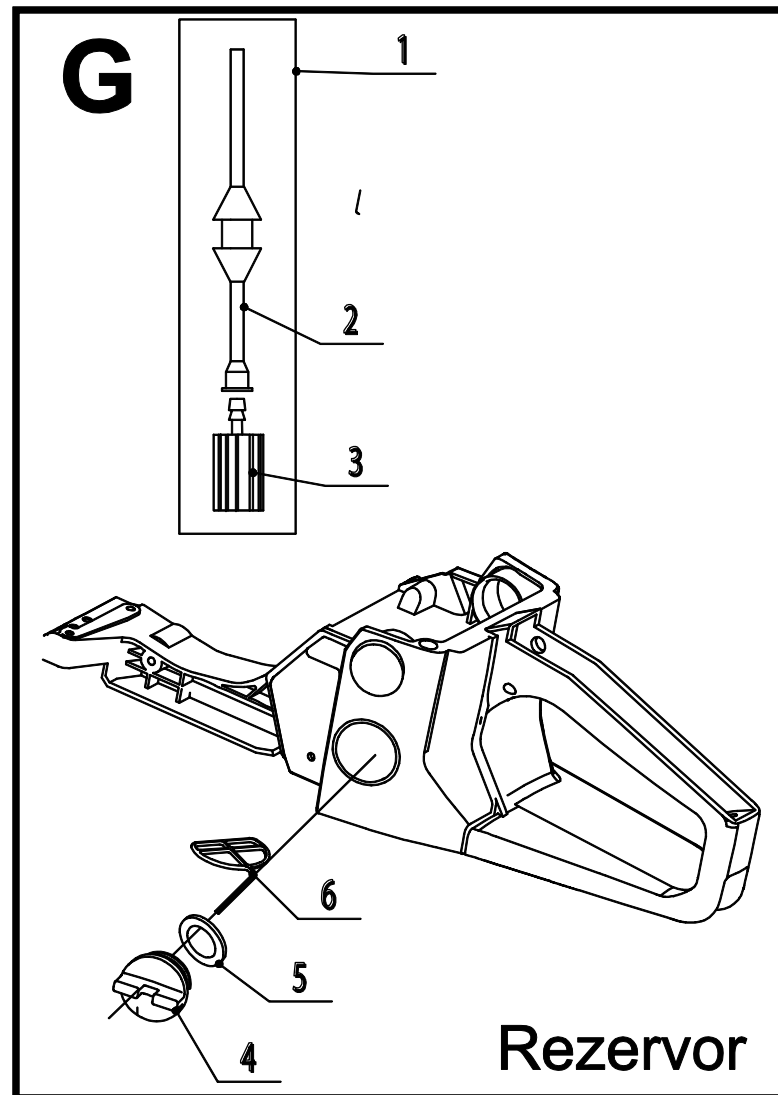


**Ansamblu
frânare**

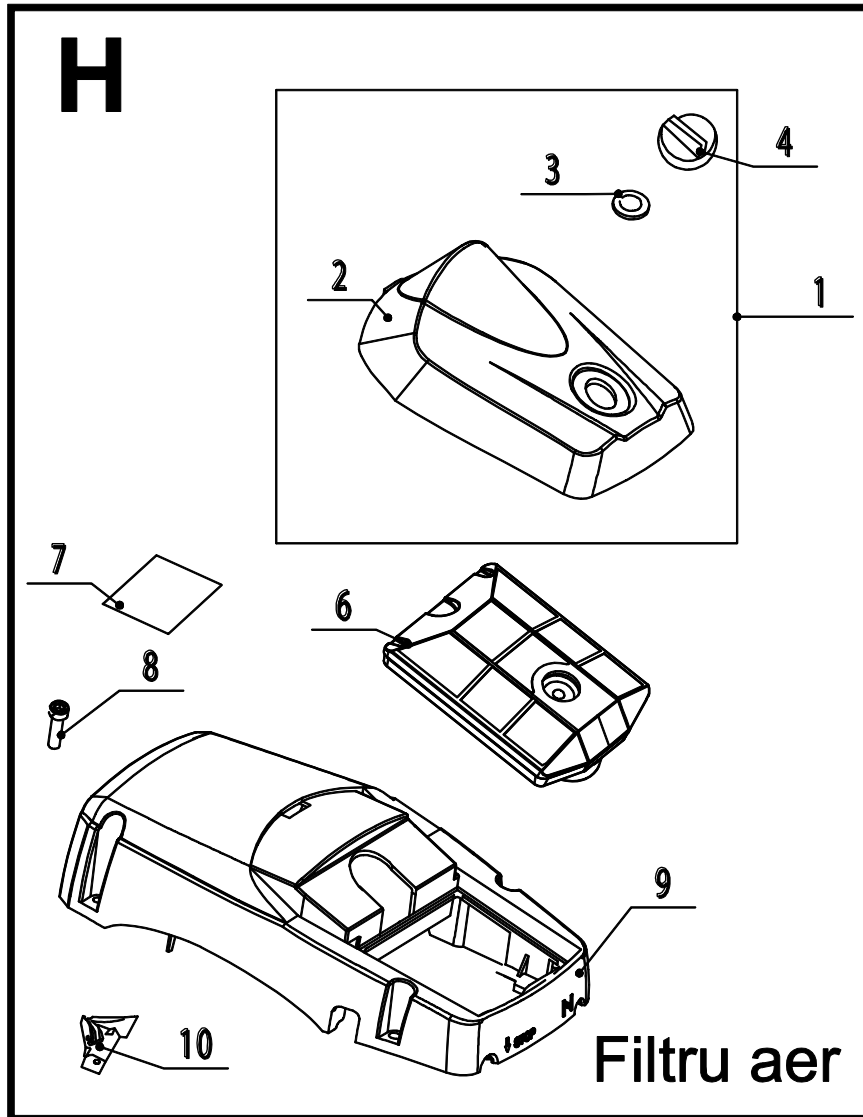
Cod	Cod intern	Denumire	Cant.
E01	ps455-e01	front handle guard	1
E02	ps455-e02	snap ring 3	1
E03	ps455-e03	recoil spring	1
E04	ps455-e04	plate washer 6×18	1
E05	ps455-e05	snap ring 4	1
E06	ps455-e06	grommet	1
E07	ps455-e07	stopper plate	1
E08	ps455-e08	stopper pin	1
E09	ps455-e09	brake spring cover	1
E10	ps455-e10	screw ST4.2×10	5
E11	ps455-e11	brake band	1
E12	ps455-e12	pin3×9	3
E13	ps455-e13	guard pin sleeve	1
E14	ps455-e14	brake spring(SUB)	1
E15	ps455-e15	brake spring(main)	1
E16	ps455-e16	brake arm	1
E17	ps455-e17	brake lever (SUB)	1
E18	ps455-e18	brake lever (main)	1
E19	ps455-e19	tensionier plate	1
E20	ps455-e20	chain adjuseting sprocker	1
E21	ps455-e21	screw chain adjusting	1
E22	ps455-e22	tooth chain adjusting	1
E23	ps455-e23	chain guide	1
E24	ps455-e24	sawdust protector	1
E25	ps455-e25	clutch cover	1
E26	ps455-e26	guard pin	1
E27	ps455-e27	damper	1
E28	ps455-e28	nut M8	2
E30	ps455-e30	snap ring 3.5	1
E31	ps455-e31	brake lever	1
E32	ps455-e32	chain adjusting ass'y	1



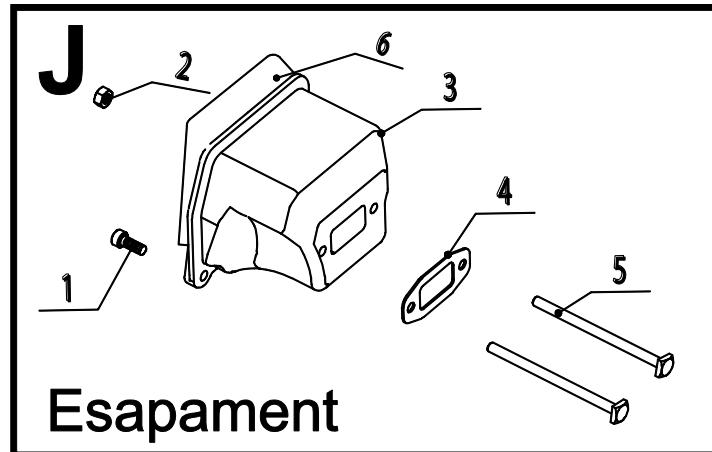
Cod	Cod intern	Denumire	Cant.
F01	ps455-f01	oil pump pipe(l)	1
F02	ps455-f02	oil filter	1
F03	ps455-f03	oil filter	1
F04	ps455-f04	oil pump pipe(0)	1
F05	ps455-f05	oil pump	1
F06	ps455-f08	screw M4×14	2
F07	ps455-f07	oil pump cover	1
F08	ps455-f08	oil pump worm	1
F09	ps455-f09	screw M4×8	3
F10	ps455-f10	spiked bumper	1
F11	ps455-f11	screw M5×10	2
F12	ps455-f12	oil tank cap holder	1
F13	ps455-f13	oil tank cap gasket	1
F14	ps455-f14	oil tank cap	1
F15	ps455-f15	oil seal plate	1
F16	ps455-f16	chain guide	1
F17	ps455-f17	guide plate	1
F18	ps455-f18	ring	1
F19	ps455-f19	oil tank valve	1
F20	ps455-f20	screw M4×10	3
F21	ps455-f21	filter	1
F22	ps455-f22	oil filter ass'y	1
F23	ps455-f23	sponge1	1
F24	ps455-f24	sponge2	1



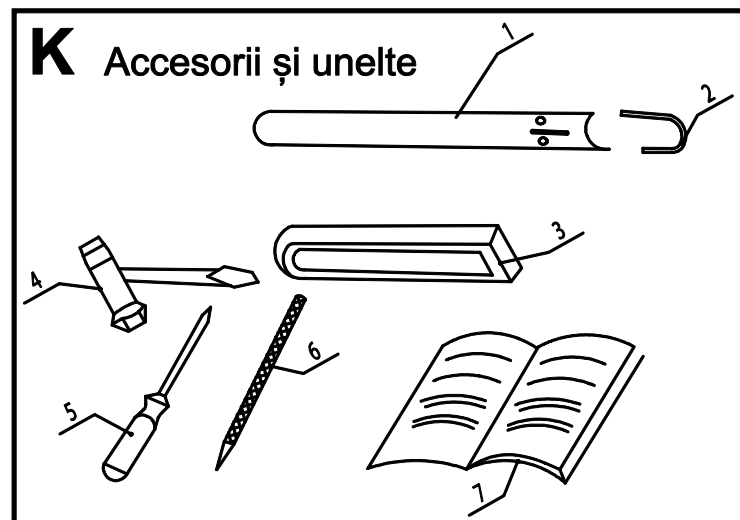
Cod	Cod intern	Denumire	Cant.
G01	ps455-g01	fuel inet ass'y	1
G02	ps455-g02	fuel pipe	1
G03	ps455-g03	fuel filter ass'y	1
G04	ps455-g04	fuel tank cap	1
G05	ps455-g05	fuel tank cap gasket	1
G06	ps455-g06	fuel tank cap holder	1



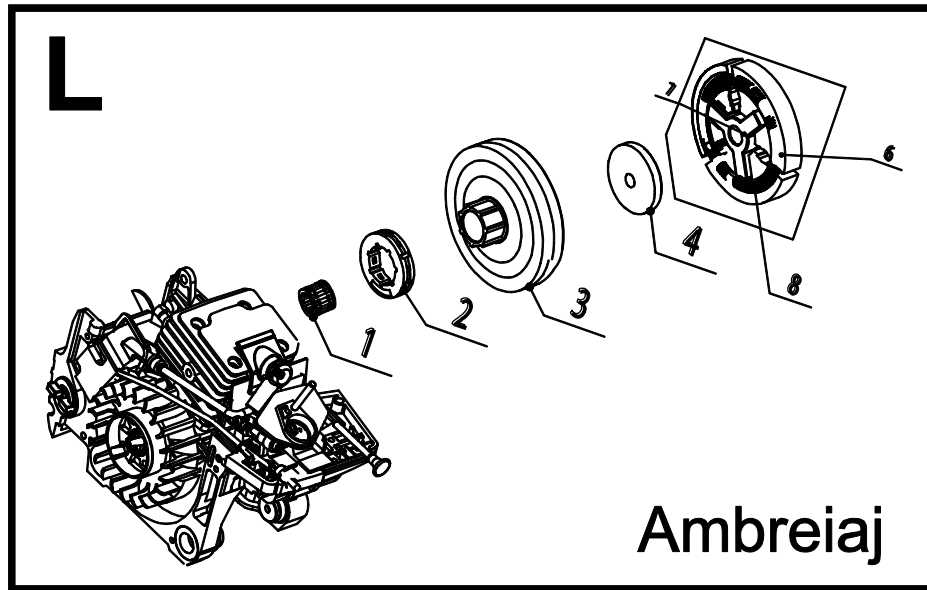
Cod	Cod intern	Denumire	Cant.
H02	ps455-h02	cylinder top cover	1
H03	ps455-h03	nylon gasket	1
H04	ps455-h04	air filter cover knob	1
H06	ps455-h06	air filter comp	1
H08	ps455-h08	screw M5x 14	5
H09	ps455-h09	cylinder top cover	1
H10	ps455-h10	guide (1)	1
H11	ps455-h11	o ring	1



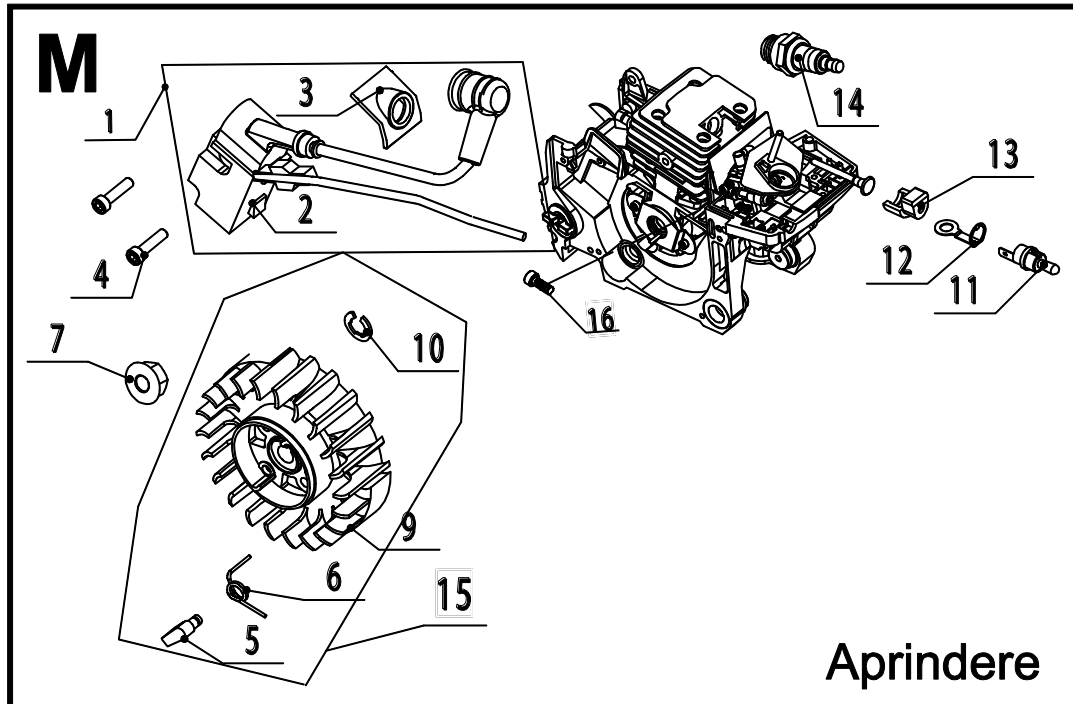
Cod	Cod intern	Denumire	Cant.
J01	ps455-j01	screw M5×10	2
J02	ps455-j02	muffler nut M5	2
J03	ps455-j03	muffler	1
J04	ps455-j04	muffler gasket	1
J05	ps455-j05	muffler bolt M5×87	2
J06	ps455-j06	muffler cover	1



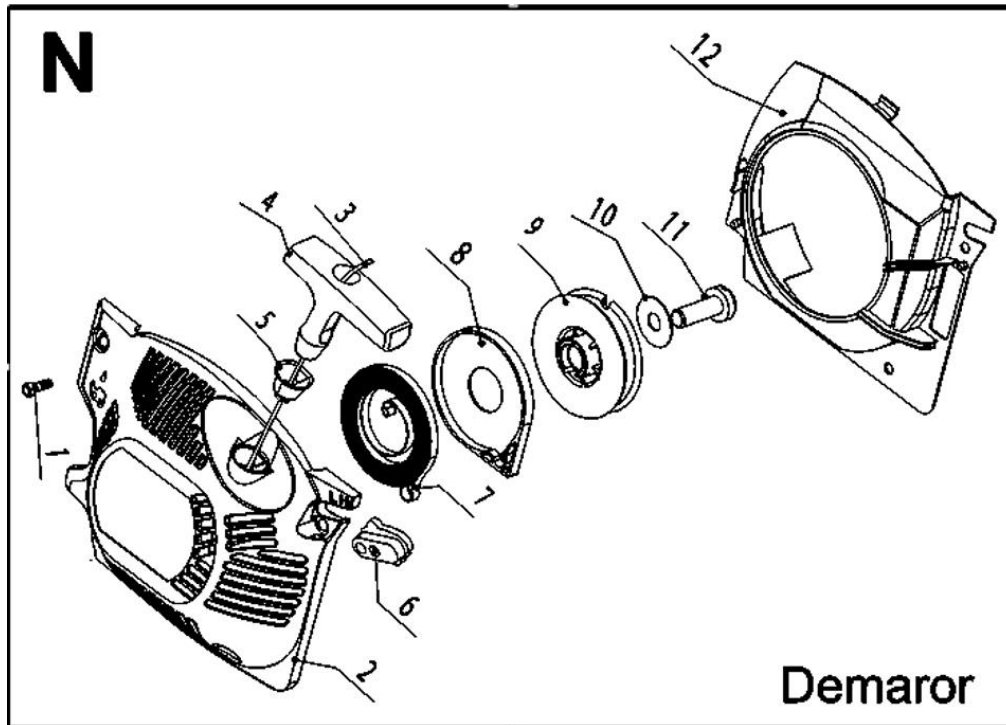
Cod	Cod intern	Denumire	Cant.
K01	cs455-s	guide bar(20")	1
K01	cs505-s		1
K02	cs455-l	chain(0.325,0.058 76DL)	1
K02	cs505-l		
K03	ps455-k03	guide bar plastic(20")	1
K04	ps455-k04	sleeve wrench	1
K05	ps455-k05	screwdriver	1
K06	ps455-k06	edge file(φ4.8)	1



Cod	Cod intern	Denumire	Cant.
L01	ps455-l01	roller bearing	1
L02	ps455-l02	sproket(RIM)	1
L03	ps455-l03	clutch drum	1
L04	ps455-l04	clutch washer	1
L06	ps455-l06	Clutch Shoes	3
L07	ps455-l07	clutch	1
L08	ps455-l08	clutch spring	1



Cod	Cod intern	Denumire	Cant.
M01	ps455-m01	ignition apparatus ass'y	1
M02	ps455-m02	ignition apparatus	1
M03	ps455-m03	rubber boot	1
M04	ps455-m04	screw M5×20	2
M05	ps455-m05	pawl	2
M06	ps455-m06	spring	2
M07	ps455-m07	nut M8×1	1
M09	ps455-m09	flywheel	1
M10	ps455-m10	snap ring 4	2
M11	ps455-m11	switch(ON/OFF)	1
M12	ps455-m12	retainer switch	1
M13	ps455-m13	bubber grommet	1
M14	ps455-m14	spark plug	1
M15	ps455-m15	flywheel assy	1
M16	ps455-m16	screw M5×10	1



Cod	Cod intern	Denumire	Cant.
N01	ps455-n01	screw M5×14	4
N02	ps455-n02	starter case	1
N03	ps455-n03	nylon rope	1
N04	ps455-n04	starter grip	1
N05	ps455-n05	bushing	1
N06	ps455-n06	guide (LH)	1
N07	ps455-n07	recoil spring	1
N08	ps455-n08	recoil spring cover	1
N09	ps455-n09	starter reel	1
N10	ps455-n10	starter washerφ5×16	1
N11	ps455-n11	screw ST4.8×13F	1
N12	ps455-n12	fan cover	1