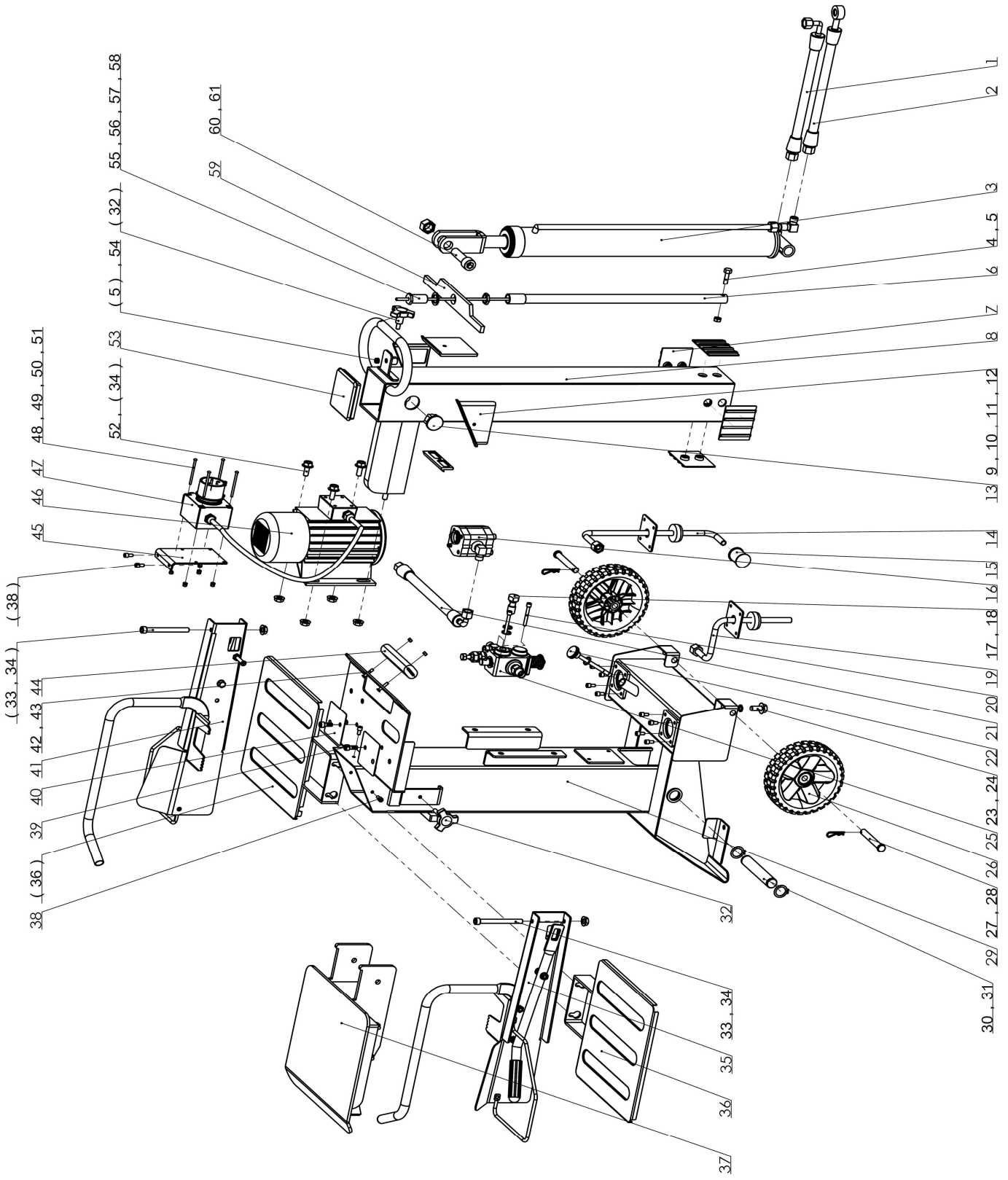


VLS 8T ECO 20





EXPLODED PARTS LIST

Year: 2020

Page(s): 2/2

VLS 8T ECO 20

No	Code	Name	Qty	No	Code	Name	Qty
1	69105	Working oil pipe	1	49		M4 flat washer	4
2	69106	Rising oil pipe	1	50		M4 spring washer	4
3	64323	Piston rod assembly	1	51		M4 Hexagon nut	4
4		M8*33 hexagon screw	1	52		M10 * 30 hexagon bolt	4
5		M8 locknut	12	53		Dust cover	1
6	69107	Connecting pipe	1	54		M8 flat washer	20
7	64313	Fixing side board	4	55		M20 * 1.5 adjusting bolt	1
8	69108	Splitter column assembly	1	56	69116	M20 flat washer	1
9	64319	Front supporting plate	1	57		M20 * 1.5 thin nut	1
10		Rear supporting plate	1	58	69117	Limit post	1
11		Left supporting plate	1	59		Lever board	1
12		Right supporting plate	1	60		M18*60 inner hexagon bolt	1
13	69109	Cover	1	61		M18 hexagon locknut	1
14	69110	Oil inlet pipe assembly	1				
15	69111	Oil filter	1				
16	55727	Gear pump assembly	1				
17		Ring bolt	1				
18		M16 combination washer	2				
19	69112	Oil drain pipe	1				
20		M6*55 inner hexagon screw	2				
21		Gear pump high pressure output pipe	1				
22		Oil ruler	1				
23		M12 * 20 hexagon bolt	1				
24		M12 combination washer	1				
25	69113	Valve	1				
26	64314	Wheel $\Phi 175 * \Phi 13$	2				
27		Cotter pin	2				
28	64315	Wheel axle	2				
29	69114	Main body column	1				
30		Mandrel	1				
31		Retaining ring for mandrel $\Phi 24$	2				
32	64308	M8 knob	3				
33		M10*90 inner hexagon screw	2				
34		M10 nut	6				
35	69115	Right handle guard	1				
36	64309	Storage table	1				
37	64317	Working table	1				
38		M6*12 inner hexagon screw	14				
39		M8*20 inner hexagon screw	6				
40		Handle bezel pad	2				
41		Left storage table	1				
42		M5 * 25 cross countersunk head screws	2				
43		M5 Hexagon nut	2				
44		Move handle	1				
45		Switch fixing plate	1				
46	27360	Motor	1				
47	31975	Switch	1				
48		M4 * 65 Phillips screw	4				