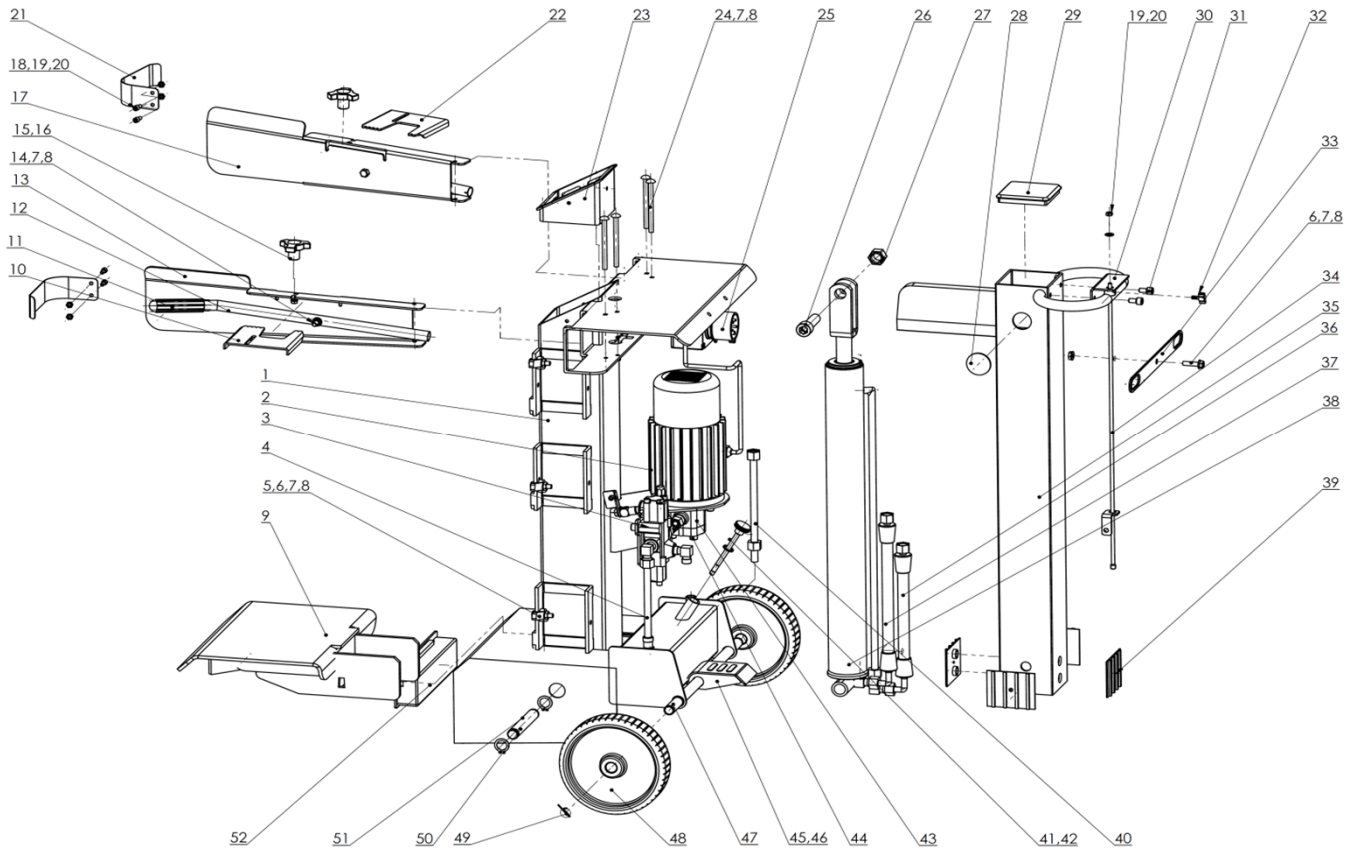


LS 8T



No	Code	Name	Qty	No	Code	Name	Qty
1		Main body column	1	25	031979	Switch	1
2	027360	Motor	1	26		M18x65 bolg	1
3	023074	Direction exchanging valve assembly	1	27		M18 anti-retracting nut	1
4	023111	Oil drain pipe	1	28		Fixing bush	1
5	023117	Small lock plate	1	29	031980	Dustproof cover	1
6		M8X25 inner hex bolt	6	30		Fixing plate	1
7		M8 anti-retracting nut	9	31		M8x15 inner hex screw	2
8		Flat washer M8	15	32		M6 screw knob	1
9	027359	Main working table assembly	1	33		Operation lever	1
10	023087	Right side clamp	1	34	023095	Ram stroke control lever	1
11	023088	Operation handle sleeve	2	35		M8x15 inner hex screw	1
12		Operation handle	2	36		Connecting pipe	1
13		Right handle side guard	1	37		Piston rod assembly	1
14		M8x80 bolt	2	38	023094	Splitter column assembly	1
15		M8 screw knob	2	39	040906	Fixing side board	4
16		M8x16 bolt	2	40		Connecting pipe	1
17		Left handle side guard	1	41	023112	Oil suction pipe	1
18		M6x12 inner hex bolt	4	42		Connecting pipe	1
19		M6 nut	4	43	027358	Pump assembly	1
20		M8 flat washer	4	44		M8x80 inner hex bolt	4
21		Protective guard plate	2	45	023086	Spring	1
22	023089	Left side clamp	1	46		Pedal	1
23	031978	Supporting plate assembly	1	47		Wheel axle	1
24		M8X110 bolt	4	48	023113	Wheel	2

**LS 8T**

No	Code	Name	Qty	No	Code	Name	Qty
49		Pin	2	97			
50		Circuit ring	2	98			
51		Shaft	1	99			
52				100			
53				101			
54				102			
55				103			
56				104			
57				105			
58				106			
59				107			
60				108			
61				109			
62				110			
63				111			
64				112			
65				113			
66				114			
67				115			
68				116			
69				117			
70				118			
71				119			
72				120			
73				121			
74				122			
75				123			
76				124			
77				125			
78				126			
79				127			
80				128			
81				129			
82				130			
83				131			
84				132			
85				133			
86				134			
87				135			
88				136			
89				137			
90				138			
91				139			
92				140			
93				141			
94				142			
95				143			
96				144			