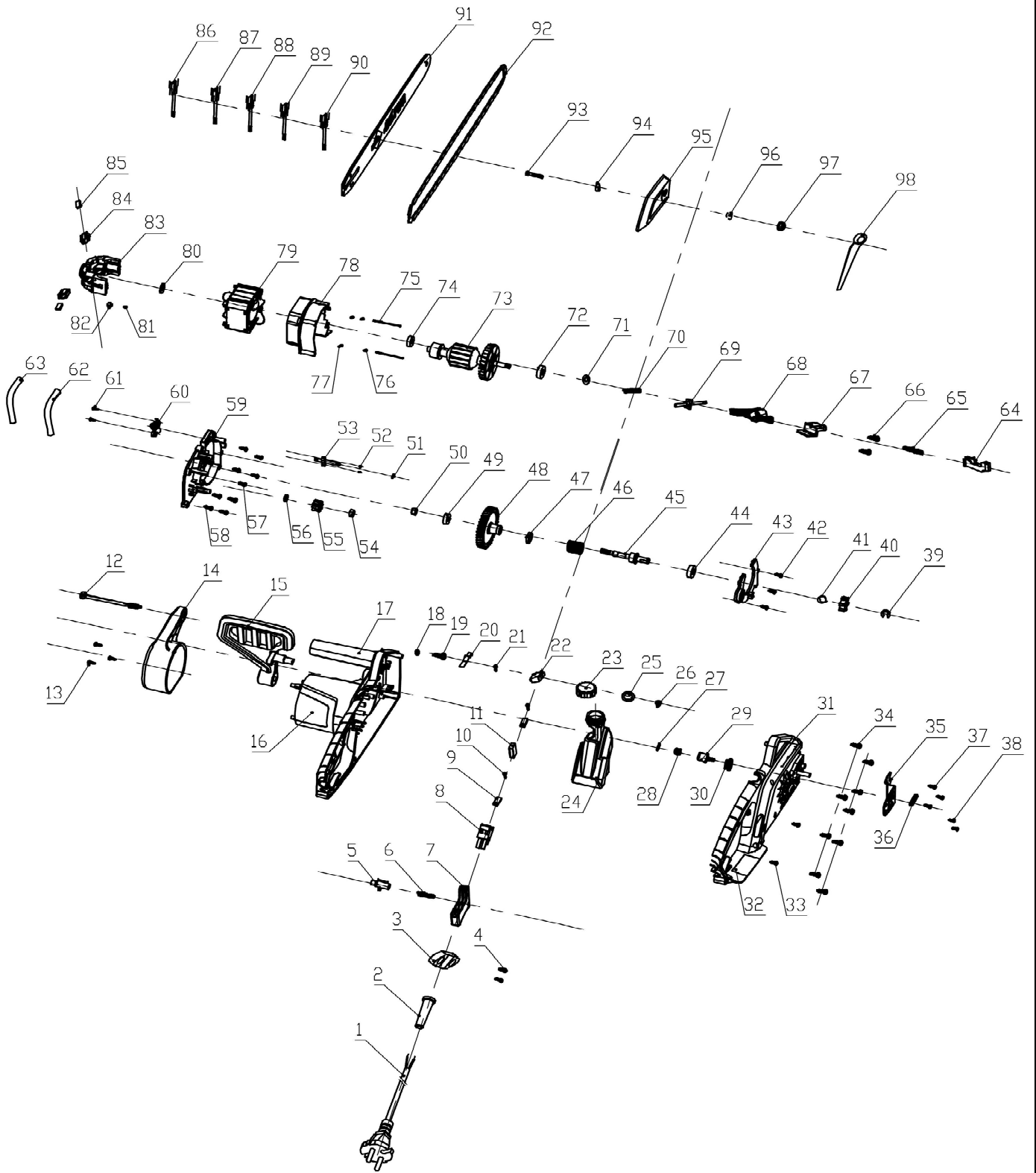


## VET 2035





# EXPLODED PARTS LIST

Year: 2017

Page(s): 2/3

## VET 2035

No	Code	Name	Qty	No	Code	Name	Qty
1		cable	1	45	044757	output shaft	1
2		cable sheath	1	46	044775	torsion spring	1
3		wire fix plate	1	47		axle sheath	1
4		screw	2	48	044770	big gear	1
5		self lock button	1			big gear insert piece	1
6		brake spring	1	49	051154	bearing 608Z	1
7		switch button	1	50		nut	1
8	044754	main switch	1	51	051174	O ring	1
9		press plate	2	52		seal ring	2
10		screw	2	53		oil nozzle	1
11		capacitor	1	54	044766	nut	1
12		screw	1	55	044758	small gear	1
13		screw	3	56		gear sheath	1
14	044755	motor rear cover	1	57		screw	5
15		protect cover	1	58		screw	4
		impact block	1	59	044759	supporter	1
16		label	1	60	051180	oil pump	1
17	044778	left case	1			worm teeth	1
18		washer	1			worm rod	1
19		screw	1		051179	worm wheel	1
20		spring leaf	1			piston bush	1
21		screw	1	61		screw	2
22		micro switch	1	62		outlet pipe	1
23		oil tank cap	1	63		inlet pipe	1
24	044771	oil tank	1	64		push rod	1
25		oil tank wahser	1	65		push rod spring	1
26		bearther	1	66		screw	2
27		oil tank connector core	1	67	044768	fixed plate	1
28		sponge	1	68	044760	connect rod	1
29		oil tank connector	1	69	044761	brake rod	1
30		oil tank seal ring	1				1
31	044777	right case	1	70		brake spring	1
			2	71		washer	1
			1	72	051159	bearing 6000Z	1
			1	73	044773	armature	1
32			1	74		bearing 608Z	1
33		screw	2	75		screw	2
34		screw	9	76		washer	2
35	044756	spike bumper	1	77		washer	2
36		seal ring	1	78	044762	wind board	1
37		screw	3	79	044772	stator	1
38		screw	2	80		hard paper	1
39	051144	E shield ring	1	81		washer	2
40	051143	sprocket	1	82		nut	2
41	051142	tension spring	1	83	044763	motor back support	1
42		screw	3	84	044764	copper brush holder	2
43		anti dust cover	1	85	044765	electric carbon	2
44	051159	bearing 6000Z	1	86		connect line 1	1

