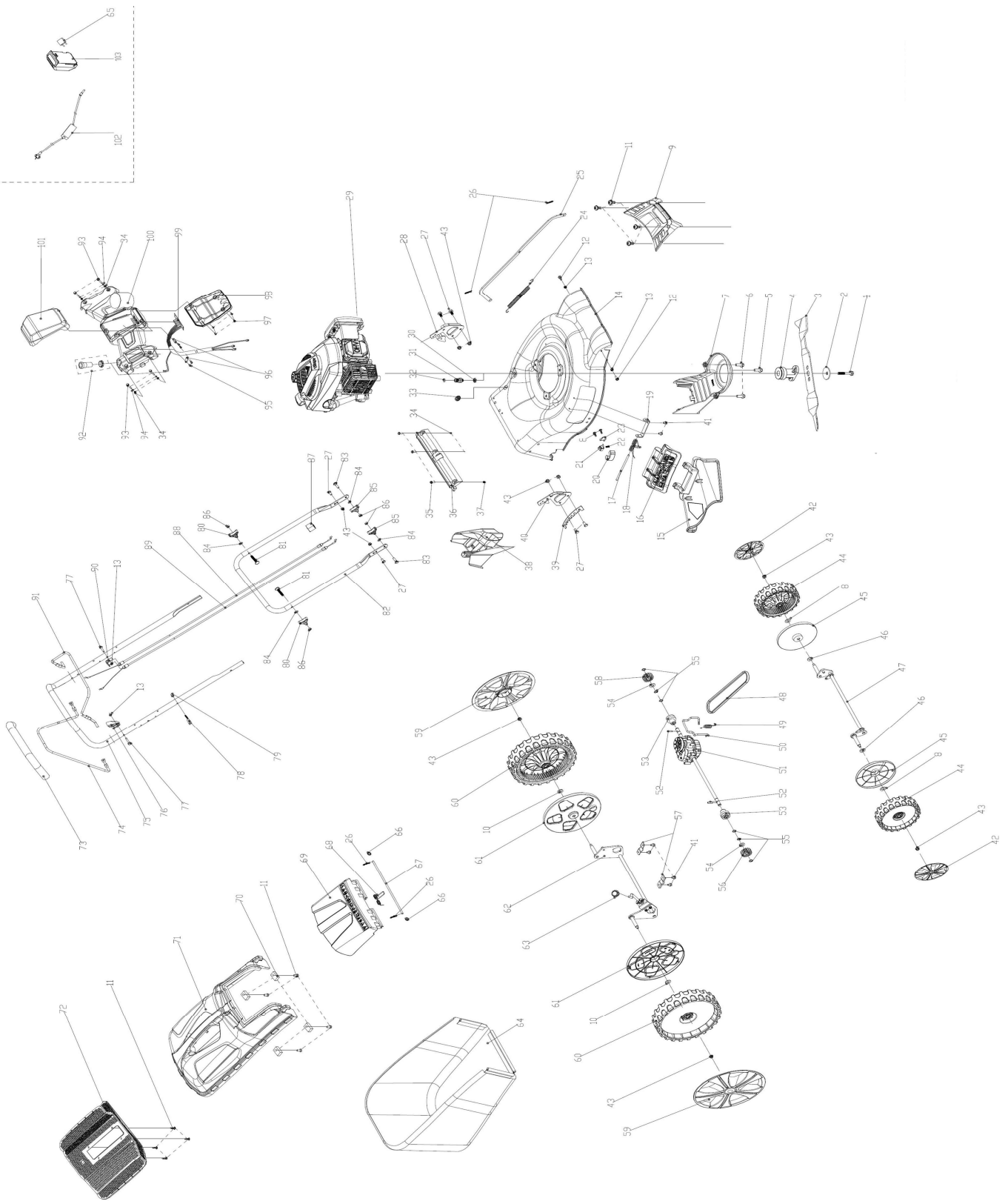


FALCON 5111 T-ES





EXPLODED PARTS LIST

Year: 2020

Page(s): 2/3

FALCON 5111 T-ES

| No | Code | Name | Qty | No | Code | Name | Qty |
|----|--------|---------------------------------------|-----|----|--------|--|-----|
| 1 | 040443 | Inch hex flange bolts | 1 | 50 | 066496 | Brake spring | 1 |
| 2 | 049386 | Blade washer | 1 | 51 | 066492 | Selfpropelled assy. | 1 |
| 3 | 040467 | Blade | 1 | 52 | 052167 | Bratchet pin | 2 |
| 4 | 037214 | Blade Adapter Assy | 1 | 53 | | Rear wheel axle sleeve | 2 |
| 5 | 052130 | Hexagon head bolts | 1 | 54 | 052165 | Selfpropelled ratchet washer | 2 |
| 6 | | Hex flange bolts | 2 | 55 | 052164 | Spring washer | 6 |
| 7 | 040468 | Belt cover | 1 | 56 | 040460 | Ratchet Wheel L | 1 |
| 8 | 052128 | Small washer | 2 | 57 | | Displacement pressure plate after | 2 |
| 9 | 040453 | Front mask | 1 | 58 | 040461 | Ratchet Wheel L | 1 |
| 10 | 052175 | Gasket | 2 | 59 | 048400 | Outer cover of hub | 2 |
| 11 | | Phillips flat head self tapping screw | 12 | 60 | 047654 | Wheel assy. | 2 |
| 12 | | Bolt | 2 | 61 | 057317 | Inner cover of hub | 2 |
| 13 | | Self-locking nut | 4 | 62 | 040457 | Rear drive assy. | 1 |
| 14 | 048394 | Deck welding assy. | 1 | 63 | 052177 | Height adjustment ball | 1 |
| 15 | 040452 | Side discharge cover | 1 | 64 | | Bottom of grass box | 1 |
| 16 | 040451 | Mulching board | 1 | 65 | | Insert fuse | 1 |
| 17 | 052158 | Mulch Shaft | 1 | 66 | | Lock washer | 2 |
| 18 | 048396 | Mulch board spring | 1 | 67 | | Shaft for rear discharge cover | 1 |
| 19 | | Bracket plate for defelctor | 1 | 68 | 053731 | Cover spring | 1 |
| 20 | 057303 | Control board upper cover | 2 | 69 | 048404 | Rear discharge cover | 1 |
| 21 | 057304 | Block | 1 | 70 | 057321 | Blade washer | 4 |
| 22 | 057305 | Cover spring | 1 | 71 | 040465 | Top of grass box | 1 |
| 23 | | Gasket | 1 | 72 | 048402 | Filter net of grass bag | 1 |
| 24 | 037169 | Pull Spring for Pull Rod | 1 | 73 | 048389 | Foam pipe | 1 |
| 25 | 040449 | Height Adjustment Pull Rod | 1 | 74 | 048388 | Self-propelled Lever | 1 |
| 26 | 052148 | R type pin | 4 | 75 | 048390 | Upper handrail | 1 |
| 27 | | Hex flange bolts | 6 | 76 | 048386 | Lever guard | 1 |
| 28 | 066493 | Right bracket | 1 | 77 | | Bolt | 2 |
| 29 | 058106 | Petrol engine T8 electric start | 1 | 78 | 066497 | Rope Guide | 1 |
| 30 | 057307 | Inlet | 1 | 79 | | Cap nut | 1 |
| 31 | 057308 | Inlet | 1 | 80 | 048391 | Triangle knob | 2 |
| 32 | 057309 | "O" ring | 1 | 81 | 052179 | Heterotypic carriage bolts | 2 |
| 33 | | Cable stopper | 1 | 82 | 048392 | Lower handrail | 1 |
| 34 | | Self-locking nut | 6 | 83 | 052131 | Half round head square neck bolts | 2 |
| 35 | | Hexagon head bolts | 3 | 84 | | Flat Gasket | 2 |
| 36 | 066494 | Rear discharge cover dust proof board | 1 | 85 | 048393 | Triangle knob | 2 |
| 37 | | Cap nut | 1 | 86 | | Hexagon nut | 4 |
| 38 | 040450 | Mulching plug | 1 | 87 | 066498 | Fastener | 1 |
| 39 | 040448 | Board for Height Adjuster | 1 | 88 | 037218 | Brake cable | 1 |
| 40 | 066495 | Right bracket | 1 | 89 | 037190 | Selfpropelled cable | 1 |
| 41 | | Self tapping screw | 2 | 90 | 037157 | Brake Cable Assy plate | 1 |
| 42 | 048397 | Outer cover of hub | 2 | 91 | 052180 | Stop lever | 1 |
| 43 | 052184 | Self-locking nut | 10 | 92 | 048383 | Electric start switch | 1 |
| 44 | 047655 | Wheel assy. | 2 | 93 | | Hex flange bolts | 4 |
| 46 | | Resilient washer | 2 | 94 | | Flat washer | 4 |
| 47 | 066491 | Front drive assy. | 1 | 95 | | Cross recessed countersunk head screws | 4 |
| 48 | 037174 | V belt | 1 | 96 | | Cable fastener | 2 |
| 49 | 040464 | Selfpropelled spring | 1 | 97 | | Cross recessed Pan head tapping screws | 4 |

