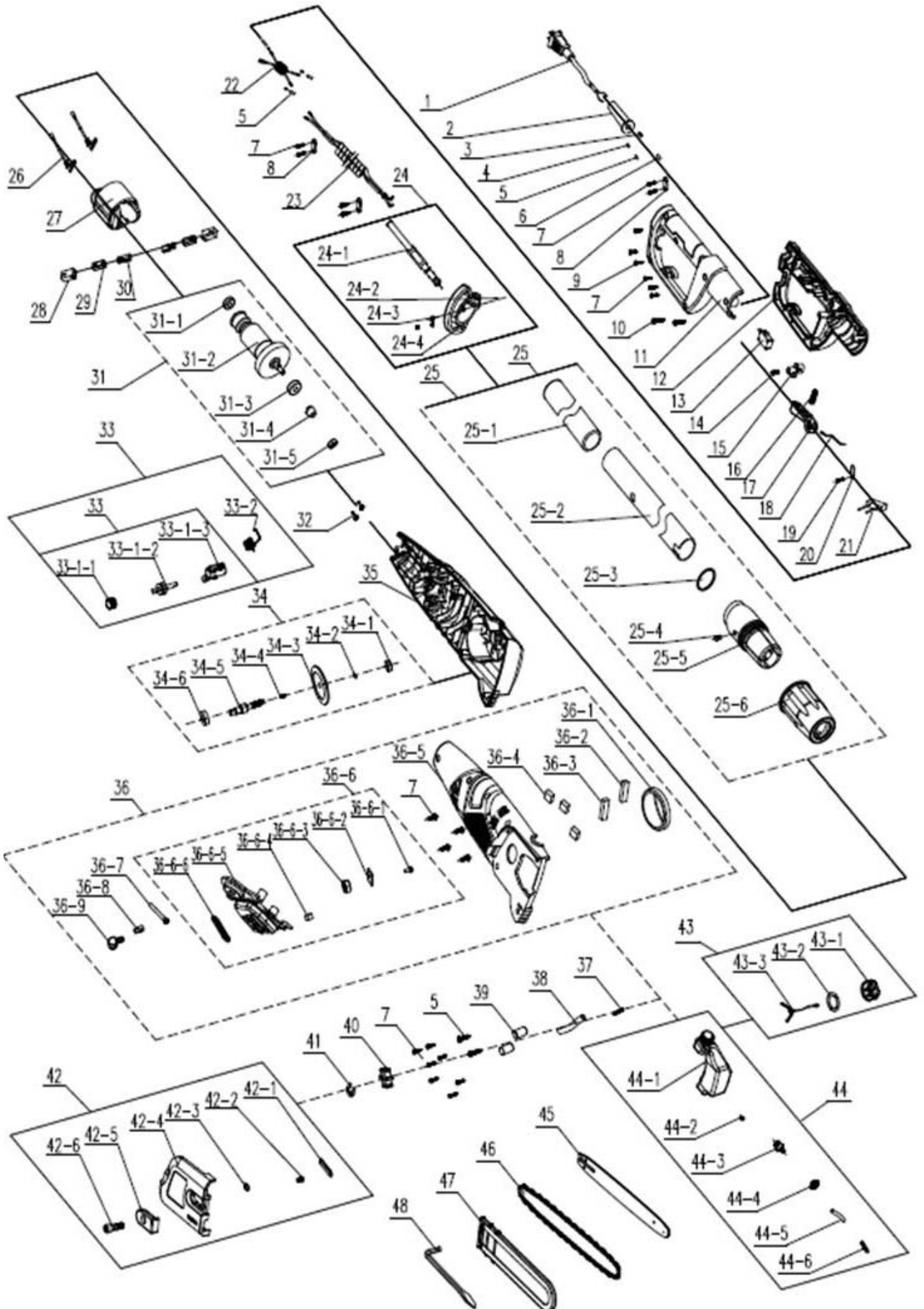


VEPS 915





EXPLODED PARTS LIST

Year: 2019

Page(s): 2/3

VEPS 915

No	Code	Name	Qty	No	Code	Name	Qty
1	57357	Cable	1	33-1		Engine oil pump	1
2		Cable sleeve	1	33-1-1		Turbine gear	1
3		Parent terminal	1	33-1-2		Turbine	1
4		Copper belt	1	33-1-3		pump body	1
5		Heat shrinkable tube	1	33-2		Pump extension spring	1
6		Heat shrinkable tube	1	34	57374	Output shaft assy	1
7		Self tapping screw 4*12	6	34-1		606 bearing	1
8		Cable clamp	1	34-2		E Retaining ring	1
9		Self tapping screw 4*14		34-3	57375	Big gear	1
10		Self tapping screw 5*20	5	34-4		Semicircle bond	1
11	57358	Right handle	1	34-5		Output shaft	1
12	57359	Left handle	1	34-6		6900 nearing	1
13		Control switch	1	35	57376	left housing	1
14	57360	Anti-lock spring	1	36	57377	Right housing assy	1
15	57361	Anti-lock button	1	36-1		Sponge pads	1
16	57362	switch spring	1	36-2		Sponge pads	1
17	57363	Switch button	1	36-3		Sponge pads	1
18		Ligation belt	1	36-4		Sponge pads	3
19		Self tapping screw 5*20	3	36-5		Right housing	
20		clamp	1	36-6	57378	Right housing insert	1
21	57364	Capacitance	1	36-6-1		screw	1
22		inductance	1	36-6-2		gasket	1
23	57365	spring connecting wire	1	36-6-3		tension mut	1
24	57366	belt ring assy	1	36-6-4		Sealing plug	1
24-1		belt	1	36-6-5		Right housing insert	1
24-2		nut	1	36-6-6		Oil seal ring	1
24-3		screw	1	36-7		tension mut	1
24-4		belt ring	1	36-8		tension screw	1
25	57367	Tube assy'	1	36-9		oil cover connect	1
25-1		Tube sleeve	1	37	57379	Oil tube fixing spring	1
25-2		Tube	1	38	57380	oil tube	1
25-3		Big retaining ring	1	39		Rubber column	2
25-4		Guide pin	1	40	57381	sprocket	1
25-5	57368	Big tube connection	1	41	57382	E Retaining ring	1
25-6		Big tube connection sleeve	1	42	57383	End cover assy	1
26		connecting wire L=70	2	42-1		END ccover seal ring	1
27	57369	startor assy	1	42-2		Cross disc screw	1
28	57370	brush holder cover	2	42-3		Axle spring	1
29		bushing	2	42-4		end cover	1
30	57371	brush	2	42-5		Bar plate	1
31	57372	rotor assy'	1	42-6		Internal six angle screws	1
31-1		607 Bearing	1	43	57384	oil tank assy	1
31-2		rotator	1	43-1		oil tank	1
31-3		608 Bearing	1	43-2		valve	1
31-4		small gear	1	43-3		oil out connector assy	1
31-5		tension mut	1	43-4		oil tank seal ring	1
32		flange self tapping screw 3*8	2	43-5		oil tube	1
33	57373	oil pump assy'	1	43-6		Oil tube fixing spring	1

