

ORIGINAL  
 PARTS  
 REQUESTS

6LD260

6LD325

6LD360

6LD260/C

6LD325/C

6LD360/C

*Cilindro integrato*

*Ch. n° 2733504*

LC  
FAB  
REC  
MAI

LOM  
FABBR  
REGG  
MAI

SEF  
POC  
GAS  
DICI  
SER  
SER  
SER  
SER  
SER  
SER  
SER  
SER  
SER  
SER  
SER  
SER

SERI  
POC  
GAS  
DICI  
SERIE  
SERIE  
SERIE  
SERIE  
SERIE  
SERIE  
SERIE  
SERIE  
SERIE  
SERIE  
SERIE

**LOMBARDINI**  
 FABBRICA ITALIANA MOTORI S.p.A.  
 REGGIO EMILIA, ITALIA  
**MADE IN ITALY**

SERIE GUARNIZIONI  
 POCLETTE JOINTS  
 GASKET SET  
 NICHTUNGSSATZ  
 SERIE JUN 1 A S

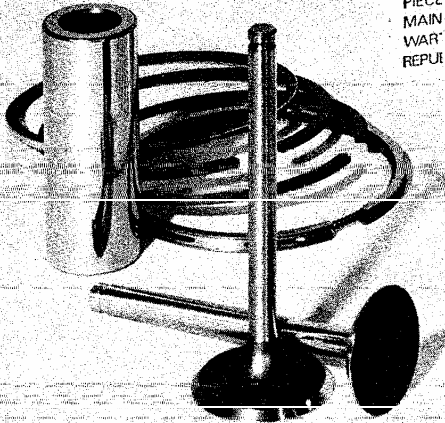
RICAMBI PRIMO IMPIEGO  
 PIECES POUR L'ENTRETIEN  
 MAINTENANCE SPARE PARTS  
 WARTUNG - ERSATZTEILE  
 REPUESTOS DE PRONTO EMPLEO

**SERVICE**

REPUESTOS ORIGINALES  
 ORIGINAL ERSATZTEILE  
 GENUINE SPARE PARTS  
 PIECES D'ORIGINE  
 RICAMBI ORIGINALI

**LOMBARDINI MOTORI**

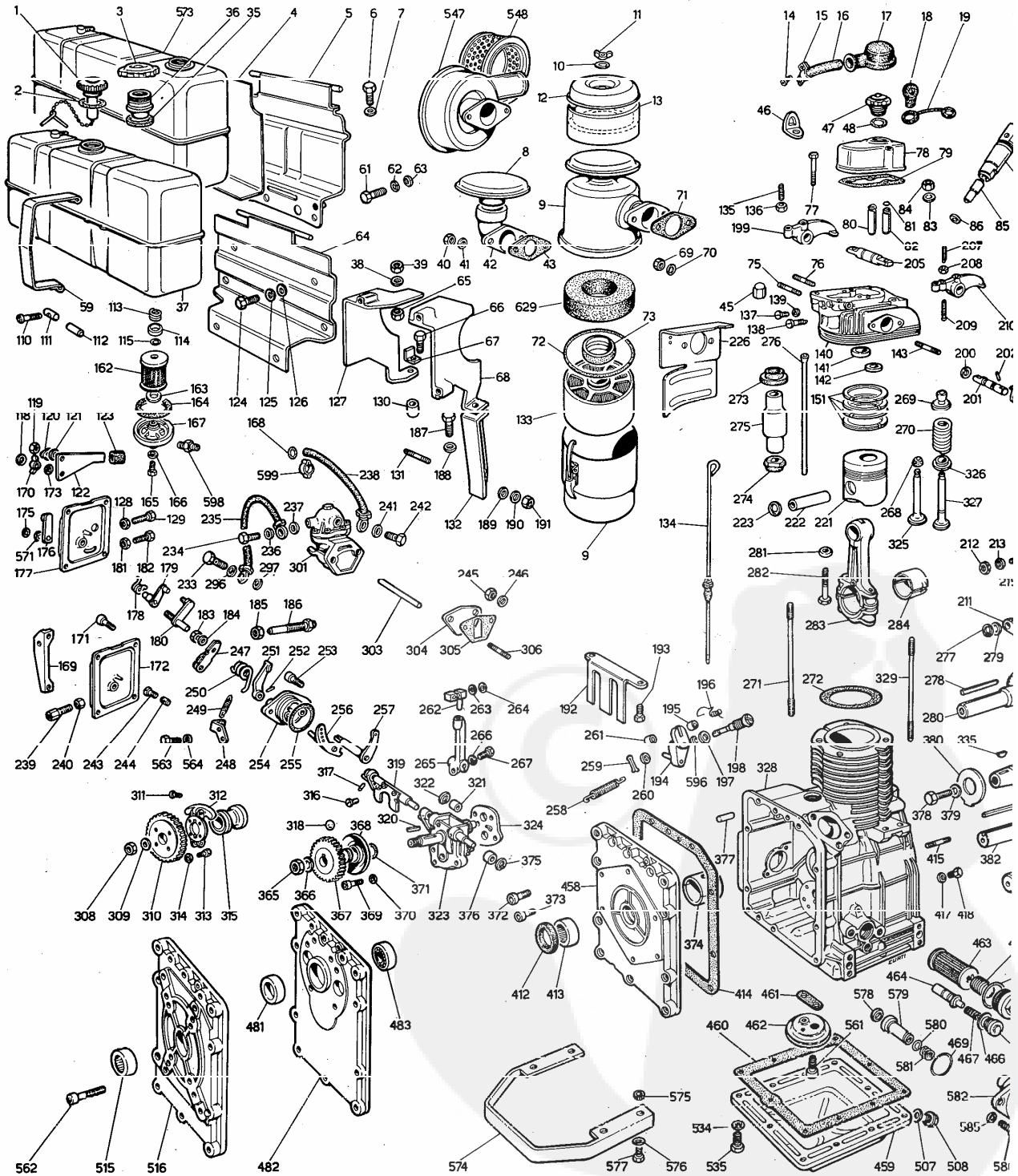
**LOMBARDINI MOTORI**



RICAMBI PER MOTORE STANDARD.  
PER APPLICAZIONI SPECIALI CONSULTARE  
IL CATALOGO PRESSO I CENTRI ASSISTENZA  
E RICAMBI.

PIECES POUR DES MOTEURS STANDARD.  
POUR LES ADAPTATIONS CONSULTER  
LE CATALOGUE AUPRES  
DES AGENTS SERVICE.

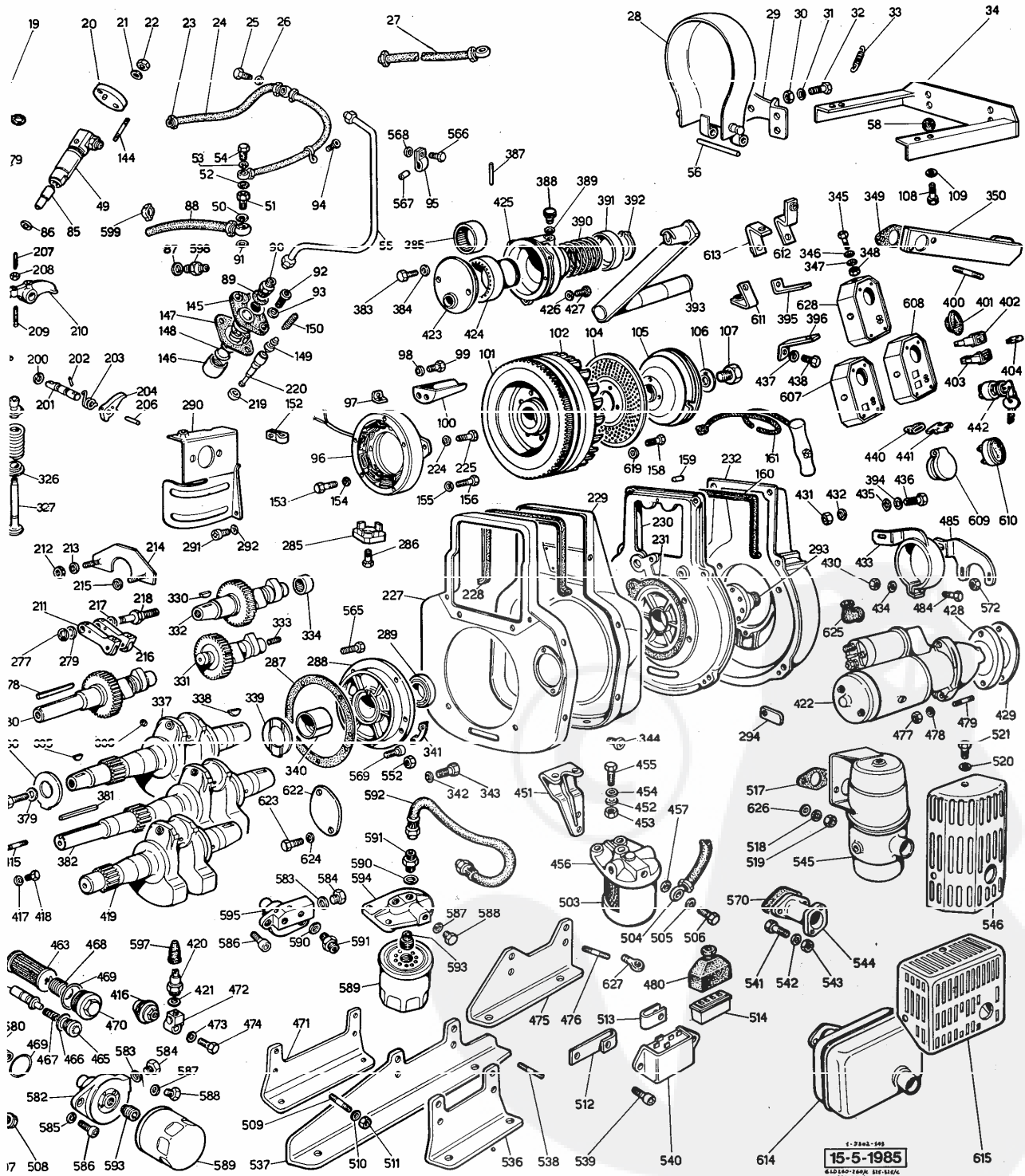
SPARE PARTS FOR STAND  
FOR SPECIAL APPLICATION  
CATALOG AT SERVICE CENT



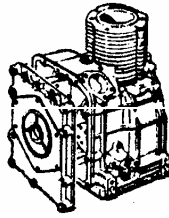
R STANDARD ENGINE.  
APPLICATIONS SEE MASTER  
VICE CENTERS.

ERSATZTEILE FÜR STANDARD-MOTOREN.  
FÜR SONDERANFERTIGUNGEN SIEHE  
ERSATZTEILKATALOG BEI SERVICE  
WERKSTÄTTEN.

REPUESTOS PARA MOTORES STANDARD.  
PARA APLICACIONES VEASE CATALOGO  
EN LAS ESTACIONES SERVICE.



500	6 LD 260
520	6 LD 325
530	6 LD 360
532	6 LD 360/V
-	6 LD 400
503	6 LD 260/C
523	6 LD 325/C
533	6 LD 360/C



LEGENDA .....	TAVOLA RICAMBI SPARE PARTS TABLE TABLEAU PIECES DETACHEES	MATR. P.NO. ... 1.5302.143 REF.
---------------	---	---------------------------------------

\*\*\*\*\*  
15.05.1985  
\*\*\*\*\*

MOTORI TIPO	6LD 260	6LD 260/C	CON CILINDRO INTEGRALE
ENGINES TYPE	6LD 325	6LD 325/C	WITHOUT DETACHEABLE CYL.
MOTEURS TYPE	6LD 360	6LD 360/C	AVEC CYLINDRE INTEGRAL

VEDI/SEE/VOIR

LIBRETTO USO E MANUTENZIONE USE-MAINTENANCE BOOKLET	.....	1.5302.077
LIVRET EMPLOI-ENTRETIEN LIBRETTO SERVICE SERVICE DIRECTORY	.....	1.7968.002
RESEAU S.A.V. SERIE ACCESSORI ACCESSORY SET	.....	283.8140.080
JEU ACCESSOIRES		

NOTE/REMARKS/REMARQUES

F - ALTA MOVIMENTAZIONE/FAST MOVING PART/HAUTE MOUVEMENT.  
 S - MEDIA MOVIMENTAZIONE/MEDIUM MOVING PART/MOYEN MOUVEMENT.  
 D - BASSA MOVIMENTAZIONE/SLOW MOVING PART/BAS MOUVEMENT.  
 E - AD ESAURIMENTO/EXHAUSTING PART/PIECE EN EPUISEMENT.  
 N - PARTICOLARE NUOVO O FORNITO SU RICHIESTA/  
 -NEW PART OR PART SUPPLIED UPON REQUEST/  
 -PIECE NOUVELLE OU FOURNIE SUR DEMANDE.  
 A - VALIDO DAL MOTORE.../FROM ENG.S.NO.../A PARTIR DU MOTEUR...  
 (VEDI CIRCOLARE TECNICA/SEE SERVICE LETTER/VOIR CIRC.TECHN.)  
 B - VALIDO FINO AL MOTORE.../UP TO ENG.S.NO.../JUSQU'AU MOTEUR...  
 (VEDI CIRCOLARE TECNICA/SEE SERVICE LETTER/VOIR CIRC.TECHN.)  
 I - INTERCAMBIABILE/INTERCHANGEABLE.  
 (VEDI CIRCOLARE TECNICA/SEE SERVICE LETTER/VOIR CIRC.TECHN.)  
 V - STOCK VITALE PER OFFICINE SERVICE.  
 VITAL STOCK FOR SERVICE DEALER.  
 STOCK VITAL POUR STATIONS SERVICE.  
 C - STOCK VITALE PER COSTRUTTORI, ESPORTATORI, ENTI DI STATO.  
 VITAL STOCK FOR PRODUCERS, EXPORTERS, STATE COMPANIES.  
 STOCK VITAL POUR CONSTRUCTEURS, EXPORT., INSTITUT. DE L'ETAT.  
 R - STOCK VITALE PER RETTIFICA.  
 VITAL STOCK FOR GRINDING WORKSHOPS.  
 STOCK VITAL POUR USINES DE RECTIFICATION.  
 10/50/2-Q.TA MINIMA FORNIBILE/MIN.SUPPLIED Q.TY/Q.TE MIN.FOURNIE.  
 - GRUPPO COMPLETO/ASSEMBLY/GROUPE COMPLETE.  
 + COMPONENTE DEL GRUPPO/ASSEMBLY COMPONENT/COMPOSANT DU GROUPE.

SERIE GUARNIZIONI	500.8180.039	6LD260-260/C
GASKET SET	520.8180.047	6LD325-325/C
	530.8180.055	6LD360-360/C

BLOCCO MOTORE SHORT BLDCK		TIPO MOTORE ENGINE TYPE		BL. MOTORE CON TESTA SH. BLOCK WITH CYL.H	
5000.1560.019	6LD260	CONIC.	5000.1560.113		
5000.1560.035	6LD260	EXT.4 SAE	5000.1560.120		
5000.1560.037	6LD260	EXT.A 3	5000.1560.123		
5030.1560.025	6LD260/C	CONIC.	5030.1560.114		
5200.1560.022	6LD325	CONIC.	5200.1560.114		
5200.1560.036	6LD325	EXT.4 SAE	5200.1560.121		
5200.1560.038	6LD325	EXT.A 3	5200.1560.124		
5230.1560.026	6LD325/C	CONIC.	5230.1560.117		
5300.1560.047	6LD360	CONIC.	5300.1560.115		
5300.1560.046	6LD360	EXT.4 SAE	5300.1560.122		
5300.1560.048	6LD360	EXT.A 3	5300.1560.125		
5300.1560.062	6LD360	EXT.2 SAE	5300.1560.127		
5330.1560.044	6LD360/C	CONIC.	5330.1560.118		
5330.1560.043	6LD360/C	EXT.4 SAE	5330.1560.126		
FIG. NO.	MATRICOLA P.NO	Q.TA Q.TY	NOTE REMARKS	GR. 6 - 1.5302.143	PAG. 2
1+2=	=2830.9043.025 FV C	1	TAPPO SERBATOIO/FUEL TANK CAP STD.		
2+	2700.4650.056 N	10 1			
3+	5030.9043.045 S	1	TAPPO SERBATOIO/TANK CAP SPECIAL		
„	500.9043.034 N	1	X SERB.CON TAPPO RIF.LAT.(9996.779) RIGHT SIDE FILLING CAP F.TANK		
4	500.4701.010 F C	10 1			
5	500.8866.053 F C	1	X SERB.L.DISTR./GEAR SIDE FUEL TANK		
6	9.1770.004 F C	10 2	M 8 X 1,25 X 20		
7	9.7565.007 FV C	10 2			
8	292.2135.094 D	1			
9+72+73+133+629=	=500.3700.105 F IC	1	CON CAPPELLOTTO/AIRCLEAN.WITH COVER STD.		
	=500.3700.106 D IC	1	X MOTORI CON POMPA ALIMENTAZIONE ENGINES WITH FUEL FEED.PUMP		
9+10+11+12+13+72+	73+133+629=		FILTRO ARIA CON PREFILTRO A CICLONE CYCLONIC TYPE AIRCLEANER		
	=500.3700.107 F IC	1	STD.		
	=500.3700.108 S I	1	X MOTORI CON POMPA ALIMENTAZIONE ENGINES WITH FUEL FEED.PUMP		
10+	9.7555.004 S C	10 1			
11+	9.3200.002 S	10 1			
12+	500.2125.055 SV C	1			
13+	500.1301.053 FV C	10 1	PREFILTRO/PREFILTER		
14	9.9730.023 N	1			
15+	2760.3617.020 S	10 1			
16+	2830.9600.064 S	1	MM 700		
„	5000.9601.044 FV C	10 1	MM 500		
17+	2830.2145.003 F C	1			
18	270.9055.003 FV C	10 1			
19	500.3695.038 SV	10 1			
20	500.3790.042 S I	1			
21	9.7565.004 FV C	10 2			
22	9.3240.008 F C	10 2			
23	.....				
24	500.9601.064 FV C	10 1	STD. (MM 530)		
„	5000.9601.065 N	1	X FILTRO COMB.SUL MOTORE (MM 1290) FUEL FILTER ON ENGINE		
25	9.1900.002 FV C	10 1			
26	9.4670.003 FV C	10 2			
27	5000.9375.078 D	1	X SERB.L.VOLANO/FLYWH.SIDE F.TANK		

FIG. NO.	MATRICOLA P.NO	Q.TA Q.TY	NOTE REMARKS	GR. 6 - 1.5302.143 PAG. 3
28+29+56= =5000.6927.036 S		1		
29+	.....		VEDI/SEE FIG. 28+...	
30	9.3240.008 F BC	10 4		
31	9.7565.004 FVBC	10 4		
32	9.1760.032 S B	10 4	M 6 X 1 X 14	
33	9.1770.053 N	10 2	M 8 X 1,25 X 16	
34	5000.5725.034 S	10 2		
34	5000.8903.051 D	1 1	X 6LD260-325	
34	5300.8903.052 S C	1 1	X 6LD360	
35	2700.4650.056 N	10 1		
36	5000.6902.018 D	1 1		
37+1+2= =500.8103.038 F C		1	SERBATOIO COMPLETO/FUEL TANK STD.	
38	9.7565.007 FV C	10 2		
39	9.3240.020 F C	10 2		
40	9.3240.021 S	10 2		
41	9.7565.007 FV C	10 2		
42	5200.2942.019 D I	1 1		
43+	500.4500.092 F	10 1		
45	9.3230.026 S	10 2	LATO DISTRIBUZIONE/GEAR SIDE	
46+	904.8506.003 S AC	10 1		
47+48= =270.9050.021 FV C		1	TAPPO SFIATO/BREATHING CAP STD.	
47+15+16+17+48= =2830.9050.029 FV C		1	TAPPO SFIATO/BREATHING CAP PROTETTO/PROTECTED	
48+	9.1200.014 FVIC	10 1		
49+85= =500.6615.032 FV C		1	PORTAPOLVERIZZATORE/NOZZLE HOLDER STD.	
50	9.4670.015 FV C	10 1		
51	710.1901.012 FVIC	10 1		
52	9.4670.003 FV C	10 1		
53	9.4670.003 FV C	10 1		
54	9.1900.002 FV C	10 1		
55	500.9372.090 FV C	1 1		
56+	.....		VEDI/SEE FIG. 28+...	
58	720.3527.004 F	10 4		
59+110+111= =500.3617.010 F C		10 2	FASCETTA FISSAGGIO SERBATOIO FUEL TANK FIXING CLAMP	
61	9.1770.004 F C	10 2	M 8 X 1,25 X 20	
62	9.7565.007 FV C	10 2		
63	9.7625.012 FV C	10 2		
64	5000.8866.058 S	1 1	X SERB.L.VOLANO/FLYWH.SIDE F.TANK	
65	9.3240.018 F C	10 2		
66	9.1770.017 S	10 1	M 8 X 1,25 X 60	
67	500.5111.066 S	10 1		
68	5000.8866.064 S	1 1	X 6LD260-260/C-325-325/C	
68	5000.8866.059 S	1 1	X 6LD360-360/C	
69	9.3240.018 F C	10 2		
70	9.7565.007 FV C	10 2		
71+	500.4500.092 F	10 2		

FIG. NO.	MATRICOLO P.NO	Q.TA Q.TY	NOTE REMARKS	GR. 6	1.5302.143	PAG. 4
72+	500.3526.052	F BC 10 1			H= 18 DIAM.=117	
..	9.1201.049	FVBC 10 1			H=5,5 DIAM.=128	
..	500.4775.120	FVAC 10 1			H= 10 DIAM.=135	
73+	500.1261.072	FVIC 10 1	H=17,6 DIAM.=54			
75+	9.6780.010	FV C 10 1	M 8 X 22 (34)			
76+	9.6780.071	FV C 10 1	M 8 X 28 (40)			
77+	9.9730.034	D 10 2	M 8 X 1,25 X 55			
78+46+77=	=500.2125.084	F IC 1	CAPPELLO SCATOLA BILANCIERI ROCKER ARM COVER			
79+	500.4400.015	F 50 1				
80+	500.4845.071	FVICR10 1	STD. GUIDA V.ASP./INLET V.GUIDE			
..	500.4845.075	D I R10 1	+0,50			
81+	500.1160.008	FV C 10 2				
82+	500.4845.030	FV CR10 1	STD. GUIDA V.SCAR./EXHAUST V.GUIDE			
..	500.4845.052	D R10 1	+0,50			
83	9.7625.061	S C 10 2	LATO VOLANO/FLYWHELL SIDE			
84	9.3240.016	F C 10 2	LATO VOLANO/FLYWHELL SIDE			
85+	520.6531.095	FVIC 1	POLVERIZZATORE/NOZZLE STD.			
86	9.4670.005	FVBC 10 1	0,50 D=16,50			
..	9.4670.006	FVBC 10 2	1,00 D=16,50			
..	9.4670.064	FVAC 10 1	1,00 D=18,85			
..	9.4670.065	FVAC 10 1	1,50 D=18,85			
87	9.4670.003	FV C 10 1				
88	500.9375.204	FVAC 1	DA SERB.L.DISTR.A POMPA IN.(MM 142) FROM GEAR SIDE F.TANK TO INJECT.PUMP			
..	5000.9375.245	D A 1	DA SERB.L.VOL. A POMPA IN.(MM 420) FROM FLYW.SIDE F.TANK TO INJECT.PUMP			
89+	9.1200.031	FV C 10 1				
90+	271.7265.008	D 1				
91	9.4670.015	FV C 10 1				
92	9.9730.100	FV C 10 2	M 8 X 1,25 X 25			
93	9.7625.010	FV C 10 2				
94	9.9790.037	FV C 10 1	M 6 X 1 X 8			
95	2830.3617.016	S 10 1				
96	283.1156.090	FVIC 1	ALTERNATOR 12 V 12 A			
..	5000.1156.098	F C 1	.. 12 V 4 A			
97	500.6275.076	S C 10 1				
98	9.7555.004	S C 10 2				
99	9.9730.012	S 10 2	M 6 X 1 X 20			
100	5000.3350.065	D 1	X AVVIAM.ELETTR./EL.STARTING			
..	500.3350.057	D B 1	X AVV.MAN./HAND-CRANK START. FIND A.../UP TO ENG.S.NO...			
..	540.3350.090	N 1	X AVV.MAN./HAND-CRANK START. DA.../FROM ENG.S.NO...			
101+	530.2816.036	SVAC 1	CORONA AVVIAMENTO/CROWN GEAR			
102+101=	=5000.9885.047	S AC 1	VOLANO+CORONA / FLYWHELL+CROWN GEAR X AV.EL./EL.ST.12V 4A 6LD260-325-360			
	=5000.9885.048	S AC 1	X AV.EL./EL.ST.12V 12A .. .. .			
102	500.9881.055	S 1	X 6LD260-325 STD.			
..	5000.9882.027	N 1	X 6LD260-325 IMP.LUCE/LIGHT.SYSTEM			
..	503.9882.002	D 1	X 6LD260/C-325/C STD.			
..	5300.9884.005	S C 1	X 6LD360-360/V STD.& IMP.LUCE/LIGHT			
..	533.9884.007	N 1	X 6LD360/C STD.			
..	533.9884.008	N 1	X 6LD 360/C IMP.LUCE/LIGHT.SYSTEM			
..	5000.9885.021	N B 1	X AVV.MANOV.CON/SENZA IMP.LUCE HAND-CRANK START.WITH/WITHOUT			
..	540.9880.129	N A 1	LIGH.SYST.SU/ON 6LD260-325-360			
..	5030.9884.083	N B 1	X AVV.MANOV.CON/SENZA IMP.LUCE			
..	543.9880.130	N A 1	HAND-CR.START.WITH/WITHOUT LIGHT. SYSTEM SU/ON 6LD260/C-325/C-360/C			

FIS. NO.	MATRICOLO P.NO	DATA Q.TY	NOTE	REMARKS	CR. 4 - 1 5302 143	PAG. 5
104	500.5096.009	S B	1	X AVV.MAN./HAND-CRANK STARTING		
105	500.5095.076	FVAC	1			
105	500.6960.069	FV C	1	X 6LD260-325-360	STD.	
	503.6960.083	S C	1	X 6LD260/C-325/C-360/C	STD.	
106	9.7626.043	F IC	10	1		
107	9.1800.030	F IC	10	1	X 6LD260-325-360-360/V	
	9.1800.029	S	1	1	X 6LD260/C-325/C-360/C	
108	9.9730.027	FV C	10	4	M 8 X 1,25 X 25	
109	9.7565.007	FV C	10	4		
110+	9.9730.016	FV C	10	2	M 6 X 1 X 35	
111+	45.1557.019	FV C	10	2		
112	271.9600.057	FV C	10	2		
113+	273.5575.006	FV C	10	1		
114+	273.3930.019	F C	10	1		
115+	9.1200.032	FV C	10	1		
118+	9.1165.001	S	10	1		
119+	9.3240.004	F C	10	1		
120+	90.6330.057	D	10	1		
121+	9.7625.019	S C	10	1		
122+	500.5201.094	S	10	1		
123+	270.6550.010	S	10	1		
124	9.1770.009	S	10	4	X 6LD260-325-360	M 8 X 35
	9.1770.031	N	10	4	X 6LD260/C-325/C-360/C	M 8 X 50
125	9.7565.007	FV C	10	4		
126	9.7625.061	S C	10	4		
127	5000.8866.063	S	10	1	X 6LD260-260/C-325-325/C	
	5000.8866.061	S	10	1	X 6LD360-360/C	
128	9.3240.006	F C	10	1		
129	9.1760.029	N	10	1	M 6 X 1 X 30	
130	5300.3521.034	S I	10	1		
131	9.6780.012	FV C	10	2	M 8 X 25 (37)	
132	5000.8546.027	S	10	1		
133+	500.5496.057	FVBC	10	1	MASSA/FILTER.ELEMENT	H=87 DIAM.=120
	500.5496.071	FVAC	10	1		H=90 DIAM.=119
134	500.1400.035	FV C	10	1	STD. MM 385	
	5000.1400.072	S C	10	1	SPECIAL MM 190	
135+	500.9850.048	FV C	10	1		
136+	9.3240.008	F C	10	1		
137+	9.1760.001	F C	10	1	M 6 X 1 X 10	
138+	9.4670.001	FV C	10	1		
139+	715.9820.080	S	10	1		
140+75+76+80+81+82+					TESTA COMPLETA PREDISPOSTA	
137+138+139+141+142+					PER DECOMPRESSIONE	
143+144+200+201+202+					CYLINDER HEAD PRESET FOR	
203+204+206+268+269+					DECOMPRESSION	
270+325+326+327=						
	=502.9201.061	SV C	10	1	X 6LD260-260/C	
	=522.9201.062	SV C	10	1	X 6LD325-325/C-360-360/C	
141+	500.8000.039	S CR10	10	1	ASP./INLET SOLO/ONLY X 6LD260-260/C	
	520.8000.053	FVBCR10	10	1	SEDE V.ASPIRAZ./INLET V.SEAT	
	283.8000.036	FVACR10	10	1		
142+	500.8000.038	S CR10	10	1	SC./EXHAUST SOLO/ONLY X 6LD260-260/C	
	520.8000.054	FVBCR10	10	1	SEDE V.SCARICO/EXHAUST V.SEAT	
	283.8000.037	FVACR10	10	1		
143+	9.6780.068	S	10	2	M 8 X 18 (30) STD.	
	9.6780.010	FV C	10	2	M 8 X 22 (34) SPECIAL K 9997.717	
	9.6780.069	FV C	10	2	X MARM.A BAULETTO/BOX FORM MUFFLER	
144+	9.6760.035	FV C	10	2	M 6 X 53 (65)	



NO.	P.NO	Q.TY	REMARKS	PAG. 6
145+89+90=			POMPA INIEZIONE/INJECTION PUMP	
	=500.6590.019	FV C 1	X 6LD260-260/C-325-325/C STD.	
	=500.6590.044	SV C 1	X " " " " " " BOSCH TYPE	
	=530.6590.069	FVIC 1	X 6LD360-360/C " " " " STD.	
146	500.7215.035	FV C 1		
147+	500.4580.023	N 50	1 0,30	
"	500.4580.024	N 50	1 0,50	
"	500.4580.029	N 50	1 1,00	
"	500.4580.057	N 50	1 0,05	
148	500.6000.036	FV C 10	1	
149	500.9472.012	F C 1	BOSCH TYPE	
150	271.5755.034	S 10	1	
151+	500.8210.064	FV C 10	1 STD. X 6LD260-260/C	
"	500.8210.065	FV CR10	1 +0,50 " "	
"	500.8210.066	S CR10	1 +1,00 " "	
"	520.8210.080	FV C 10	1 STD. X 6LD325-325/C	
"	520.8210.081	FV CR10	1 +0,50 " "	
"	520.8210.082	F CR10	1 +1,00 " "	
"	530.8210.083	FV C 10	1 STD. X 6LD360-360/C	
"	530.8210.087	FV CR10	1 +0,50 " "	
"	530.8210.088	F CR10	1 +1,00 " "	
152	500.3617.021	S 10	1 X 6LD260-260/C-325-325/C	
"	530.3617.046	N 1	X 6LD360-360/C	
153	9.9730.012	S 10	4 X AVV.EL./EL.ST.12V 4A-M 6X1X20	
"	9.1760.001	F C 10	3 X " " 12V 12A-M 6X1X10	
154	9.7555.004	S C 10	4 X " " 12V 4A	
"	9.7565.004	FV C 10	3 X " " 12V 12A	
155	9.7565.004	FV C 10	6 X " " 12V 4A	
156	9.1760.042	S 10	6 X " " 12V 4A	
158	9.1765.053	F IC 10	4 M 7 X 1 X 24 STD.	
"	9.1765.006	N 10	4 M 7 X 1 X 10 (MOTORI SENZA PULEGGIA) (ENGINES WITHOUT PULLEY)	
159	90.8460.083	N 10	1	
160	500.4570.012	D 10	1	
161	283.4055.003	F C 1	1	
162+113+114+115+163+			FILTRO COMBUSTIBILE COMPLETO	
164+165+166+167=			FUEL FILTER ASS.Y	
	=500.3730.028	FV C 1		
162+	500.2175.032	FV C 1	CARTUCCIA COMB./F.FILTER ELEMENT	
163+	273.4490.017	FV C 10	1	
164+	500.4431.040	F 10	1	
165+	9.1760.076	N A 1	1	
166+	9.1202.052	FVAC 10	1	
167+165+166=				
	=500.2605.024	F IC 1		
168	9.4670.003	FV C 10	1	
169+239+240=				
	=500.2516.013	S C 1		
170+	9.3200.015	FVIC 10	1	
171	9.9790.039	FV C 10	4 M 6 X 1 X 12	
172+175+176+178+179+			COMANDO A DISTANZA COMPLETO	
239+240+243+244+571=			REMOTE CONTROL ASS.Y	
	=500.2515.087	S C 1		
173+	9.7626.054	FVAC 10	1	
175+	9.3240.008	F C 10	1	

FIG. NO.	MATRICOLA F.NO	Q.TA Q.TY	NOTE REMARKS	GR. 6 - 1.5302.143	PAG. 7
176+	500.5202.014 F	C 10 1			
177+118+119+120+121+			COMANDO A MANO COMPLETO		
122+123+170+173+175+			HAND CONTROL ASS.Y		
176+178+179+180=					
	=500.2691.020 F	C 1			
178+	500.5680.044 FV	C 10 1			
179+	500.5202.060 S	10 1			
180+	500.6371.033 S	C 1			
181	9.3240.008 F	C 10 1			
182	9.1760.029 N	10 1	M 6 X 1 X 30		
183+	9.3240.008 F	C 10 1			
184+	9.7565.004 FV	C 10 1			
185+	9.3240.058 S	10 1			
186+185=			SUPPLEMENTO DI COPPIA		
	=530.8576.007 FV	C 1	EXTRA FUEL DEVICE		
187	9.9730.024 FV	C 10 1	M 8 X 1,25 X 14		
188	9.7565.007 FV	C 10 1			
189	9.7625.061 S	C 10 2			
190	9.7565.007 FV	C 10 2			
191	9.3240.018 F	C 10 2			
192	500.5095.099 S	C 10 1			
193	9.9790.037 FV	C 10 2	M 6 X 1 X 8		
194	500.5203.019 FV	C 1	STD.		
..	500.5203.002 S	1	X GR.ELETTR./GENERATOR SETS		
195	9.1585.028 S	10 1	X		
196	500.5670.008 D	10 1	X GR.ELETTR./GENERATOR SETS		
197	9.4670.003 FV	C 10 1			
198	500.6140.164 FVAC	10 1	STD.		
..	500.6141.074 S	1	X GR.ELETTR./GENERATOR SETS		
199+135+136+205+207+			GRUPPO BILANC.COMPLETO		
208+209+210=			ROCKER ARM ASS.Y		
	=502.4330.030 S	C 1	STD.		
	=5030.4330.042 N	1	X 6LD260/C-325/C-360/C		
			ROTAZ.D./CLOCKW.ROTAT.		
200+	9.1200.034 FV	C 10 1			
201+	500.1110.071 S	C 1			
202+	9.8430.009 S	10 1			
203+	500.5680.046 S	10 1			
204+200+201+202+203+			DECOMPRESSIONE COMPLETA		
206=			DECOMPRESSION ASS.Y		
	=502.3348.017 S	C 1			
204+	500.5270.078 S	1			
205+	502.6045.033 SVIC	1			
206+	9.8430.023 FV	C 10 1			
207+	500.9850.048 FV	C 10 1			
208+	9.3240.008 F	C 10 2			
209+	500.9850.052 S	C 10 1			
210+	.....		VEDI/SEE FIG.NO. 199+...		
211	500.5270.085 FVAC	1	FIND A... & DA...		
..	500.5271.022 E	1	UP TO ENG.S.NO... & FROM ENG.S.NO...		
			DA... & FIND A...		
			FROM ENG.S.NO... & UP TO ENG.S.NO...		
212	9.3240.018 F	C 10 2			
213	9.7555.007 FV	C 10 2			
214	503.6275.069 D	1	X 6LD260/C-325/C--360/C		
215	9.1200.001 FV	C 10 2			

FIG.	MATRICOLO	Q.TA	NOTE	CR. 6 - 1.5302.143
NO.	P.NO	Q.TY	REMARKS	PAG. 8
216	500.5270.084 FVAC	1	FINO A... & DA...	
			UP TO ENG.S.NO... & FROM ENG.S.NO...	
	500.5271.022 E	1	DA... & FINO A...	
			FROM ENG.S.NO... & UP TO ENG.S.NO...	
217	500.7550.006 S C 10	1		
218	500.6140.080 S C 10	1		
219	500.6400.045 SV C 10	1		
220	500.6578.010 FV C	1	X 6LD260-260/C-325-325/C STD.	
	500.6578.019 D	1	X " " " " BOSCH TYPE	
	530.6578.014 FV C	1	X 6LD360-360/C STD.	
	530.6578.021 S	1	X " " " " BOSCH TYPE	
221+151+222+223=			PISTONE COMPLETO/PISTON ASS.Y	
	=500.6501.090 FV C	1	STD. X 6LD260-260/C	
	=500.6501.091 FV CR	1	+0,50	
	=500.6501.092 S CR	1	+1,00	
	=5030.6500.195 D C	1	STD. X 6LD260/C CLOCKWISE ROTATION	
	=5030.6500.196 D CR	1	+0,50	
	=5030.6500.197 D CR	1	+1,00	
	=520.6502.028 FV C	1	STD. X 6LD325-325/C	
	=520.6502.029 FV CR	1	+0,50	
	=520.6502.030 F CR	1	+1,00	
	=530.6502.063 FV C	1	STD. X 6LD360-360/C	
	=530.6502.064 FV CR	1	+0,50	
	=530.6502.065 F CR	1	+1,00	
222+	500.8480.023 F C	1		
223+	9.1240.017 FV C 10	2		
224	9.7565.004 FV C 10	5		
225	9.1760.042 S 10	5	X AVV.EL./EL.ST. 12V 4A-M 6X1X18	
	9.9730.015 S C 10	5	X " " " " 12V 12A-M 6X1X30	
226	500.5065.100 FVIC	1		
227	500.6372.077 S IC	1	X 6LD260-260/C-325-325/C	
	530.6372.075 S C	1	X 6LD360-360/C	
	530.6372.062 S AC	1	X AVV.EL./ELECTRIC STARTING	
228	530.4570.010 FV C	1	STD.	
	530.4570.011 N 50	1	X AVV.EL./ELECTRIC STARTING	
229	500.2568.086 S IC	1	X 6LD260-325	
	503.2568.087 S AC	1	X 6LD260/C-325/C	
	533.2568.091 D A	1	X 6LD360/C	
	530.2568.092 S IC	1	X 6LD360	
	530.2568.078 S AC	1	X AVV.EL./ELECTRIC STARTING	
230	5000.6372.091 E	1	X AVVIAM.MANOV.CON/SENZA IMP.LUCE	
			HAND-CRANK START.WITH/WITHOUT	
			LIGHING SYSTEM	
			FINO A.../UP TO ENG.S.NO...	
	540.6370.128 N I	1	X AVVIAM.MANOV.CON/SENZA IMP.LUCE	
			HAND-CRANK START.WITH/WITHOUT	
			LIGHING SYSTEM	
			DA.../FROM ENG.S.NO...	
231	500.4701.019 N B 50	1	0,40 X AVV.MAN.CON/SENZA IMP.LUCE	
	500.4701.020 N B 50	1	0,30 HAND-C.STARTING WITH/WITHOUT	
	500.4701.021 N B 50	1	0,20 LIGHTING SYSTEM	
	500.4701.022 S 10	1	0,10 FINO A.../UP TO ENG.S.NO...	
232	500.2568.098 D AC	1	X AVVIAM.MANOVELLA/HAND-C.STARTING	
233	9.1901.032 FVIC 10	1		
234	9.1901.030 FVIC 10	1		
235	5000.9374.036 S	1	DA POMPA AL.A FILTRO COMB. (MM 360)	
			FROM FEED PUMP TO FILTER ON ENGINE	
	5000.9375.011 N	1	DA POMPA AL.A FILTRO COMB. (MM 1035)	
			FROM FEED PUMP TO REMOTE FUEL FILTER	
236	9.4670.012 FV C 10	1		
237	9.4670.012 FV C 10	1		

FIG. NO.	MATRICOLA P.NO	Q.TA Q.TY	NOTE	REMARKS	GR. 6 - 1.5302.143	PAG. 9
238	5000.9375.240 D A	1		DA FILTRO COMB.A POMPA AL. (MM 368) FROM FUEL FILTER TO FEED PUMP		
239+	70.9180.011 FV C	10	2			
240+	9.3240.009 F C	10	2			
241	9.4670.012 FV C	10	1			
242	9.1901.030 FVIC	10	1			
243+	9.9790.023 FV C	10	1	M 5 X 0,8 X 7		
244+	90.6000.031 FV C	10	1			
245+	9.3203.047 S	10	2			
246	.....					
247+	.....			VEDI/SEE FIG.NO. 254+...		
248+	500.2371.045 S	10	1			
249+	500.5800.096 FV C	10	1			
250+	500.5680.043 S	10	1			
251+	.....			VEDI/SEE FIG.NO. 254+...		
252+	9.8420.002 S	10	1			
253	9.9730.010 S	10	2	M 6 X 1 X 16		
254+183+184+247+250+				SUPPORTO LEVA REGOLATORE		
251+252+255+254+257-				CONTROL LEVER SUPPORT		
=500.8785.061 F IC		1				
255+	9.1200.087 FV C	10	1			
256+	.....			VEDI/SEE FIG.NO. 254+...		
257+	.....			VEDI/SEE FIG.NO. 254+...		
258	500.5655.027 FV C	10	1	STD.		
,,	500.5655.038 S	10	1	X GR.ELETTR./GENERATOR SETS		
252	500.2000.054 S	10	1			
260	9.7625.005 FVBC	10	1			
,,	9.7625.109 SVAC	10	1			
261	9.1585.028 S	10	1	X GR.ELETTR./GENERATOR SETS		
262+263+264=						
=500.8280.022 FV C		10	1			
263+	9.7625.003 S	10	1			
264+	9.1165.003 S	10	1			
265+266+267=						
=500.5200.291 S IC		10	1			
266+	9.7565.004 FV C	10	1			
267+	9.1760.005 F C	10	1	M 6 X 1 X 16		
268+	500.2135.072 FV C	10	1			
269+	500.6410.036 FV C	10	2			
270+	500.5755.045 FV C	10	2			
271+	500.6850.074 FV C	10	2	LATO DISTRIBUZIONE/GEAR SIDE		
272+	500.4730.017 F C	10	1	0,70 X 6LD260-260/C		
,,	500.4730.026 F C	10	1	0,50		
,,	500.4730.027 F C	10	1	0,80		
,,	500.4730.029 F C	10	1	0,60		
,,	520.4730.030 F C	10	1	0,50 X 6LD325-325/C		
,,	520.4730.031 F C	10	1	0,60		
,,	520.4730.032 F C	10	1	0,70		
,,	520.4730.033 F C	10	1	0,80		
,,	530.4730.039 FV C	10	1	0,50 X 6LD360-360/C		
,,	530.4730.040 F C	10	1	0,60		
,,	530.4730.041 F C	10	1	0,70		
,,	530.4730.042 F C	10	1	0,80		
273	500.4740.018 FV C	10	1			
274	500.4740.025 FV C	10	1			
275	500.9520.046 FVIC	10	1			
276	500.1410.016 FV C	10	2			
277	9.1240.004 F C	10	1			

φ30

FIG. NO.	MATRICOLO P.NO	Q.TA Q.TY	NOTE REMARKS	GR. 4 - 1.5302.143 PAG. 10
278	9.2280.050 S	10 1		
279	500.7550.006 S C	10 1		
280	503.1011.049 S AC	1	X 6LD260/C-325/C-360/C EXT.4SAE(CYL) FINO A... & DA... UP TO ENG.S.NO... & FROM ENG.S.NO...	
..	543.1011.078 E	1	X 6LD260/C-325/C-360/C EXT.4SAE(CYL) DA... & FINO A... FROM... & UP TO ENG.S.NO...	
..	5030.1011.067 N A	1	X 6LD260/C-325/C-360/C CLOCKW.ROT.	
281+	9.7626.048 SV C	10 2		
282+	9.1770.083 S	10 2	M 8 X 1,25 X 50	
283+281+282=	=500.1526.030 F AC	1	BIELLA COMPLETA CONNECTING ROD	
284	360.1640.066 FVIC	1	STD. X BIELLA/CONNECTING ROD	
..	360.1640.067 FVICR	1	-0,25	
..	360.1640.068 FVICR	1	-0,50	
285	90.6607.001 S C	1	X AVVIAM.EL./EL.STARTING 12 V 4 A	
286	9.9730.010 S	10 1	M 6 X 1 X 16	
287+	500.4700.094 S	50 1	0,30 STD & X AVVIAMENTO MANOVELLA	
..	500.4701.003 S	50 1	0,20 ,, HAND-C.STARTING	
..	500.4701.015 S	50 1	0,10 ,, DA.../FROM ENG.S.NO...	
..	500.4701.017 S	50 1	0,40 ,,	
288	500.8675.082 FV C	1	STD. & AVV.EL./EL.START.12 V 4 A & ANCHE AVV.MAN.CON/SENZA IMP.LUCE/ HAND-C.ST.WITH/WITHOUT LIGHT.SYSTEM DA.../FROM ENG.S.NO...	
..	5300.8676.039 S AC	1	X AVVIAM.EL./EL.STARTING 12 V 12 A	
289	9.1210.092 FV C	10 1	X 6LD260-325-360	
..	9.1213.001 FV C	10 1	X 6LD260/C-325/C-360/C	
290	500.5065.101 FVIC	1		
291	9.9790.037 FV C	10 2	M 6 X 1 X 8	
292	9.7565.007 FV C	10 2		
293	5000.6480.036 S B	1	X PER AVV.MANOV.CON/SENZA IMP.LUCE HAND-C.ST.WITH/WITHOUT LIGHT.SYST. FINO A.../UP TO ENG.S.NO...	
..	540.6480.041 N	1	X PER AVV.MANOV.CON/SENZA IMP.LUCE HAND-C.ST.WITH/WITHOUT LIGHT.SYST. DA.../FROM ENG.S.NO...	
294	5000.6275.093 N	10 1	X AVV.ELETTROGENI	
296	9.4670.016 FV C	10 1		
297	9.4670.016 FV C	10 1		
301	500.6585.032 SV C	1	POMPA ALIMENTAZIONE/FEED PUMP	
303	500.7200.048 SV C	1		
304+	255.6700.012 FV C	1		
305+	560.4580.047 FVIC	50 1	1,00	
..	560.4580.049 SV	10 1	0,50	
..	560.4580.050 SV	10 1	0,80	
306+	9.6780.007 S	10 2	M 8 X 20 (32)	
308	9.3240.018 F C	10 1		
309	9.7565.007 FV C	10 1		
310+311+312=	=500.4936.064 S I	1	X GRUPPI ELETTROGENI GENERATOR SETS	
310	500.4990.045 E B	1		
311+	9.8400.073 N	10 2		
312+	500.5496.060 S BC	1		
313	9.1755.001 F BC	10 4	M 5 X 0,8 X 8	
314	9.7555.003 FVBC	10 4		
315	500.4896.002 S	1		
316	9.9810.002 D	10 2		
317	9.8430.023 FV C	10 1		

FIG. NO.	MATRICOLA P.NO	Q.TA Q.TY	NOTE REMARKS	GR. 6 = 1.5302.143 PAG. 11
318	9.8245.009 FV C 10	6		
319	500.6141.046 SV C	1	STD.	
..	500.6141.059 D	1	GR.ELETTR./GENERATOR SETS	
320+	9.2200.013 FV C 10	1	STD.	
..	9.2280.061 S	10	GR.ELETTR./GENERATOR SETS	
321	9.1585.029 S	1	.. ..	
322	9.1240.077 F C 10	1	.. ..	
323+248+249+320+324+ 563+564=			POMPA OLIO COMPLETA LUB.OIL PUMP ASS.Y	
	=500.6605.044 FVIC	1	STD. X 6LD260-325-360	
	=5000.6605.046 S IC	1	X GR.EL./GEN.SETS 6LD260-325-360	
	=503.6605.045 S I,	1	STD. X 6LD260/C-325/C-360/C	
324+	500.3855.007 S	1	X 6LD260-325-360	
..	503.3855.009 D	1	X 6LD260/C-325/C-360/C	
325+	500.9652.018 FV CR10	1	ASP./INLET SOLO/ONLY X 6LD260-260/C	
..	520.9652.025 FVBCR10	1	VALVOLA ASPIRAZIONE/INLET VALVE	
..	520.9652.040 FVACR10	1	.. ..	
326+	500.3430.070 SVAC 10	2	.. ..	
327+	500.9685.028 FV CR10	1	SCAR./EXH. SOLO/ONLY X 6LD260-260/C	
..	520.9685.039 FVBCR10	1	VALVOLA SCARICO/EXHAUST VALVE	
..	520.9685.051 FVACR10	1	.. ..	
328+245+246+271+304+ 305+306+329+377+415=			BASAMENTO COMPLETO CRANKCASE	
	=500.1510.103 S IC	1	X 6LD260-260/C STD.	
	=520.1510.104 S IC	1	X 6LD325-325/C ..	
	=530.1510.105 FVIC	1	X 6LD360-360/C ..	
329+	500.6850.092 FVIC	2	LATO VOLANO/FLYWHELL SIDE	
330	9.2280.047 FV C 10	1		
331	500.1011.052 S AC	1	STD. X 6LD260-325-360	
..			FINO A... & DA... UP TO ENG.S.NO... & FROM ENG.S.NO...	
..	500.1011.084 S AC	1	STD. X 6LD260-325-360	
..			DA... & FINO A ... FROM... & UP TO ENG.S.NO...	
332	503.1011.053 S IC	1	STD. X 6LD260/C-325/C-360/C	
333	9.9765.076 S 10	1	X 6LD260-325-360	
334	9.1585.004 S	1	X 6LD260/C-325/C-360/C	
335+	9.2280.047 FV C 10	1	X ALBERO/SHAFT STD. CONIC. EXT. A 3 - EXT. 4 (2 PEZZI/PIECES)	
..	9.2280.052 S 10	1	X ALBERO/SHAFT EXT. A 3	
336+	500.9000.069 S 10	2		
337+335+336+338=			X 6LD260-325-360	
	=500.1050.115 F IC	1	STD.CONIC. (MM 300)	
337+336+338=			X 6LD260-325-360	
	=500.1050.122 D IC	1	EXT. A 4 (MM 348,3)	
	=500.1050.126 S IC	1	EXT. 4 (MM 363,4)	
338+	9.2280.048 FV C 10	1		
339	500.1257.008 FV C 10	1		
340	500.1611.012 FVIC	1	STD. LATO VOLANO/FLYWHELL SIDE	
..	500.1611.013 FVICR	1	-0,50 ..	
..	500.1611.014 FVICR	1	-1,00 ..	
341	.....			
342	9.7565.097 FV C 10	4		
343	9.1770.002 F C 10	4	STD. M 8 X 1,25 X 16	
..	9.1770.005 F C 10	4	X AVV.EL./EL.STARTING M 8X1,25X22	
344	9.9790.037 FV C 10	6	M 6 X 1 X 8	
345	9.1760.032 S 10	2	M 6 X 1 X 14	
346	9.7625.092 SV C 10	2		

FIG. NO.	MATRICOLA P.NO	Q.TA	Q.TY	NOTE	REMARKS
347	9.7555.004	S	C 10	2	
348	9.3240.008	F	C 10	2	
349+	500.4500.091	FV	C 10	1	
350	5000.1595.035	D		1	
365	9.3240.066	S	10	1	
366	9.7565.011	FV	C 10	1	
367	500.4935.044	S		1	SOLO INGR./GEAR ONLY
..	500.4936.020	S	I	1	CON COLLARE/WITH GOV.BALLS COLLAR
368	500.2085.072	S		1	
369	9.9730.016	FV	C 10	4	M 6 X 1 X 35
370	9.7565.004	FV	C 10	4	
371	500.1160.011	SV	C 10	1	
372	9.9732.063	D	A 10	9	M 8 X 1,25 X 35
373	9.9730.028	FV	C 10	1	M 8 X 1,25 X 30
374	530.1611.018	FVIC		1	STD. LATO DISTRIBUZ./GEAR SIDE
..	530.1611.019	FVICR		1	-0,50
..	530.1611.020	FVICR		1	-1,00
375	9.1240.077	F	C 10	1	X GR.ELETR./GENERATOR SETS
376	9.1585.029	S		1	
377+	276.8460.055	S	10	2	
378	9.1770.039	S	10	1	M 8 X 1,25 X 28
379	9.7625.060	FV	C 10	1	
380	500.1257.008	FV	C 10	1	
381+	9.2280.050	S	10	1	X ALBERO/SHAFT EXT. 4
..	9.2280.081	N	10	1	X ALBERO/SHAFT EXT. 2 SAE / 3 SAE
382+335+336+338=					X MOTOPOMPE/PUMPING UNITS
=500.1050.118	D	IC	1		EXT. A 3 (MM 391)
=500.1050.119	D	IC	1		EXT. A 3 (MM 343)
382+336+338+381=					X 6LD260-325-360
=500.1050.117	S	IC	1		EXT.4 SAE J 609 A (MM 365,5)
=500.1050.128	N	IC	1		EXT.3 SAE J 609 A (MM 339)
382+336+338=					X 6LD260-325-360
=500.1050.120	D	IC	1		EXT.8 A (MM 352)
=500.1050.121	D	IC	1		EXT.9 SAE J 609 A (MM 365,5)
					FILETTO/THREAD MM 16
=500.1050.123	D	IC	1		EXT.7 SAE J 609 A (MM 338,8)
=500.1050.127	S	IC	1		EXT.9 SAE J 609 A (MM 366,2)
					FILETTO/THREAD MM 26,2
=500.1050.129	N	IC	1		EXT.9 SAE J 609 A (MM 339)
					M 8 - 3/4"
383	9.1760.001	F	C 10	2	M 6 X 1 X 10
384	9.7555.004	S	C 10	2	
385	9.1585.058	S		2	
387	9.8430.019	S	10	1	
388	5000.8965.031	S		1	
389	9.1202.016	FV	C 10	1	
390	270.5801.027	S	A	1	
391	500.7760.045	S	A	1	
392	9.1240.041	S	10	1	
393	270.5455.006	S	C	1	X 6LD260-325-360
..	715.5455.014	S		1	X 6LD260/C-325/C-360/C
394	9.7565.007	FV	C 10	2	
395	5000.8506.005	N		1	
396	5000.8506.007	N		1	
400	9.6780.021	FV	C 10	2	M 8 X 35 (47)
401	9040.2615.021	S	C	1	
402	9040.6612.063	S	A	1	SPIA OLIO/OIL WARNING
403	9040.6612.064	S	A	1	SPIA BATTERIA/BATTERY WARNING
404	9040.5175.119	S	A 10	2	
412+	9.1213.056	FVIC	10	1	

413+	9.3030.028	FV C 10	1	STD.
,,	9.3030.046	S	1	X GIOCHI ASS.RIDOTTI/COVER CASE WITH REDUCED RADIAL CLEARANCE
414+	500.4601.002	S	10	0,30
,,	500.4601.020	S	10	0,20
415+	9.6780.076	FV C 10	5	M 8 X 18 (34)
416	500.9060.011	SV C	1	X AVVIAM.EL./EL.STARTING
417	9.4670.001	FV C 10	1	
418	9.1760.001	F C 10	1	M 6 X 1 X 10
419+336+338=				X 6LD260/C-325/C-360/C
	=503.1050.116	S IC	1	STD. (MM 26+)
	=5030.1050.146	N A	1	ROT.DESTRA/CLOCKWISE ROTATION
420+441+597=				PRESSOSTATO COMPLETO
	=9040.6745.031	FVAC	1	PRESSURE OIL SWITCH
420	2760.5040.098	N	1	INTERRUTTORE A PRESSIONE D'OLIO SWITCH BY PRESSURE OIL
421	276.4670.014	FV C 10	1	X PRESSOSTATO/PRESSURE SWITCH
,,	9.4670.017	FV C 10	1	X INTERRUTTORE/SWITCH BY PRESS.OIL
422	292.5840.065	FV C	1	12 V
,,	5000.5840.075	N	1	24 V
423	5000.2691.034	S B	1	FINO A .../UP TO ENG.S.NO....
,,	540.2690.145	N	1	DA... /FROM ENG.S.NO...
424	283.4970.012	D A	1	
425	283.7885.018	E	1	
,,	283.7885.026	D I	1	
426	9.7565.007	FV C 10	3	
427	9.1770.005	F C 10	3	M 8 X 1,25 X 22
428	292.8335.073	S	10	1
429	530.3790.040	S AC	1	
430	9.3240.018	F C 10	1	
431	9.3240.008	F C 10	2	
432	9.7565.004	FV C 10	2	
433	5300.8546.028	S AC	1	X MOT.AVV./START.ENGINE BOSCH
434	9.7565.007	FV C 10	1	
435	9.7625.012	FV C 10	2	
436	9.1770.004	F C 10	2	M 8 X 1,25 X 20
437	9.7565.004	FV C 10	2	
438	9.1760.003	F C 10	2	M 6 X 1 X 12
440	5000.2118.047	N	10	4
441+	5000.9180.056	FVA	10	4
442	2830.5040.004	FV C	1	
,,	2760.5041.020	FV C	1	BOSCH
451	5000.8760.044	N	1	
452	9.7625.012	FV C 10	2	
453	9.3240.018	F C 10	2	
454	9.7565.007	FV C 10	2	
455	9.1770.006	F C 10	2	M 8 X 1,25 X 25
456+503=				FILTRO COMB.ESTERNO
	=2830.3730.036	F C	1	EXTERNAL FUEL FILTER
457	9.4670.016	FV C 10	2	
458+412+413=				X 6LD260-325-360
	=500.6646.075	S C	1	STD.
	=5000.6646.099	N	1	X GIOCHI ASS.RID./RED.RADIAL CLEAR.
459+507+508=				PORTINA DI FONDO/OIL PAN
	=500.6647.045	S IC	1	STD.
	=5000.6647.046	S IC	1	PROFONDA/DEEP



FIG. NO.	MATRICOLO P.N.O.	Q.TA Q.TY	NOTE	GR. 6	1.5302.143	PAG. 14
460+	500.4601.003	FV C 50	1			
461+	500.4776.016	D	10	1		
462	500.1745.001	F C	1		STD.	
..	5000.1745.002	S C	1		X PORTINA PROFONDA/DEEP OIL PAN	
463	500.2175.019	FV C	1		CARTUCCIA OLIO/OIL FILTER ELEMENT.	
464	500.9680.007	FV C	1			
465	500.9070.012	S C	1			
466	9.4670.021	S	10	1		
467	500.5755.049	FV C	10	1		
468	500.5725.032	FV C	10	1		
469	9.1200.016	FV C	10	1		
470	500.7060.000	FV C	1			
471	500.6427.035	F C	2		STD.	
472	5000.7330.075	D	1		X PRESSOSTATO/PRESSURE SWITCH	
..	5000.7330.138	N	1		X INTERRUETTORE/SWITCH BY PRESS.OIL	
473	9.4670.001	FV C	10	2		
474	9.1901.058	FVIC	10	1		
475	5000.6428.045	D	1		LATO ASPIRAZIONE/INLET SIDE	
..	5000.6428.046	D	1		LATO SCARICO/EXHAUST SIDE	
476	9.6780.008	FV C	10	8	M 8 X 20 (32)	
477	9.3240.066	S	10	2		
478	9.7565.011	FV C	10	2		
479	9.6800.020	FV C	10	2	M 10 X 35 (50)	
480	276.2145.014	F AC	1			
481+	9.1210.030	FV C	10	1	X 6LD260/C-325/C-360/C	
482+481+483=	=503.6646.076	S C	1		X 6LD260/C-325/C-360/C	
483+	9.3000.040	S	1			
484	9.1770.009	S	10	1	M 8 X 1,25 X 35	
485	5300.8546.031	S A	1			
503+	2830.2175.045	FVAC	1		CARTUCCIA COMB./FUEL FILTER ELEMENT	
504	5000.9375.020	N	1		DA FILTRO COMB.A POMPA IN.(MM 1036)	
..	5000.9375.079	N	1		FROM REMOTE F.FILTER TO INJECT.PUMP	
..	5000.9375.079	N	1		DA FILTRO COMB.SUL MOT.A POMPA INJ.	
..	5000.9375.079	N	1		FROM FILTER ON ENGINE TO INJECT.PUMP	
505	9.4670.016	FV C	10	2		
506	9.1901.032	FVIC	10	2		
507+	9.4670.013	FV C	10	1		
508+	9.8965.032	SVA	10	1		
509	9.6780.005	FV C	10	8	M 8 X 18 (30)	
510	9.7565.007	FV C	10	8		
511	9.3240.016	F C	10	8		
512	5000.8506.009	N	1			
513	5000.8506.008	N	1			
514	276.6740.088	FVAC	10	1	X REGOLATORE/REGULATOR SAPRISA	
..	276.6740.089	FVAC	10	1	X REGOLATORE/REGULATOR DUCATI	
..	276.6740.090	FVAC	10	1	X REG.DUCATI CON SPIA CAR.BATTERIA	
					WITH CHARG.BATT.LIGHT	
515+	9.3030.028	FV C	10	1	STD.	
..	9.3030.046	S	1		X GIOCHI ASS.RIDOTTI/COVER CASE	
					WITH REDUCED RADIAL CLEARANCE	
516+412+515+562=	=5000.6646.097	S	1		X FLANG.A & B SAE J609 A	
	=5000.6647.001	N	1		NORMAL	
					CON GIOCHI ASSIALI RIDOTTI	
					WITH REDUCED RADIAL CLEARANCE	
517+	500.4500.091	FV C	10	2		
518	9.7565.007	FV C	10	2		
519	9.3240.019	F C	10	2		
520	9.7565.004	FV C	10	3		
521	9.9790.037	FV C	10	3	M 6 X 1 X 8	
531	9.7625.010	FV C	10	10		

FIG. NO.	MATRICOLA P.NO	Q.TA Q.TY	NOTE REMARKS
535	9.1770.004 F C	10 10	M 8 X 1,25 X 20
536	5000.6428.065 F C	2	X PORTINA PROFONDA/DEEP OIL PAN
537	5000.6428.036 S	1	LATO SCARICO/EXHAUST SIDE
..	5000.6428.037 S	1	LATO ASPIRAZIONE/INLET SIDE
538	9.6780.010 FV C	10 2	M 8 X 22 (34)
539	9.9730.023 N	2	M 8 X 1,25 X 10
540	2760.7362.027 FVIC	1	X AVVIAM.EL./EL.STARTING 12 V 12 A SENZA RICARICA BATTERIA WITHOUT CHARGING BATTERY LIGHT
..	9040.7362.066 FVIC	1	X AVVIAM.EL./EL.STARTING 12V 12 A CON RICARICA BATTERIA WITH CHARGING BATTERY LIGHT
541	9.1770.004 F C	10 2	M 8 X 1,25 X 20
542	9.7565.007 FV C	10 2	
543	9.3240.018 F C	10 2	
544	530.3902.034 S B	1	X AVVIAM.EL./EL.STARTING
545	500.5462.089 FVIC	1	STD.(MOT.CON AVV.FUNE/ROPE STARTING)
..	5000.5462.094 D	1	PRED.PER PROTEZ.(MOT.CON AVV.FUNE) SUITABLE FOR M.GUARD (ROPE STARTING)
546	5000.6927.048 D	1	
547	530.3703.032 D I	1	FILTRO A SECCO/DRY AIRCLEANER STD.
..	5000.3703.098 N	1	SPECIAL K 9994.290
548	530.2175.050 FV C	1	
552	9.3203.047 S	10 5	
561	9.9732.047 N	10 1	M 12 X 1,5 X 20
562+	9.9730.122 N	10 2	X FLANG. SAE M 8 X 1,25 X 35
563+	9.9730.008 S	10 1	M 6 X 1 X 10
564+	9.7565.004 FV C	10 1	
565	9.1760.001 F C	10 4	M 6 X 1 X 10
566	9.9790.037 FV C	10 1	M 6 X 1 X 8
567	260.5390.006 S	1	
568	9.7565.007 FV C	10 1	
569	9.9731.030 S	10 2	M 8 X 1,25 X 12
570	500.4500.091 FV C	10 1	
571+	7.7626.054 FVAC	10 1	
572	9.3240.075 N	10 2	
573+3= =5000.8103.119 N		1	SERBATOIO CON TAPPO RIF.LATERALE F.TANK WITH RIGHT SIDE FILLING CAP (SPECIAL K 9996.799)
574	5000.6010.060 N	1	
575	530.3526.097 N	4	
576	9.7625.012 FV C	10 4	
577	9.1770.009 S	10 4	M 8 X 1,25 X 35
578	5000.1213.143 N	10 1	
579	5000.6495.029 N	1	
580	9.1202.013 FV C	10 1	
581	5000.5625.006 N	10 1	
582	5000.3902.074 N	1	X FILT.OLIO EST./EXTERN.OIL FILTER
583	276.4670.014 FV C	10 1	
584	9.8965.003 FV C	10 1	
585	9.4670.003 FV C	10 1	
586	9.9732.074 D	10 2	M 8 X 1,25 X 20
587	9.4670.039 S	10 1	
588	9.8965.021 FV C	10 1	
589	904.2175.040 FV C	1	CARTUCCIA OLIO/EXTERNAL OIL F.ELEM.
590	9.4670.017 FV C	10 4	
591	5600.5953.048 N	4	
592	8320.9485.029 S	2	TUBO OLIO/OIL TUBE (MM 544)
..	5000.9485.081 N	2	(MM 270)
593	276.7330.066 N	1	
594	5000.9220.028 N	1	
595	5000.3902.129 N	1	X FILT.OLIO STACC./REMOTE OIL FILT.
596	9.7625.109 SVAC	10 1	

FIG. NO.	MATRICOLA P. NO.	Q.TA Q.TY	NOTE REMARKS
597+	3600.6491.013	FVAC 1	
598	273.7300.057	SV 1	
599	9.3630.008	F C 10 1	
607	9040.2900.067	S 1	
608	9040.2900.070	S 1	
609	2760.2750.111	S 1	
610	2760.5450.009	S C 1	MANOMETRO OLIO/PRESSURE GAUGE
611	5300.8490.081	D 1	
612	5300.8490.082	D 1	
613	5000.8506.006	D 1	
614	530.5460.188	N A 1	X MOT.CON AVV.EL./EL.START.ENGINES
,,	5000.5460.204	N A 1	PREDISP.PER PROTEZ.(MOT.CON AVV.EL.) SUITABLE FOR M.GUARD (ELECTR.START.)
615	5000.6927.109	N A 1	
619	9.7565.005	N 10 4	X SENZA PULEGGIA/WITHOUT ST.PULLEY
622	270.6685.045	S 1	
623	9.1780.003	F C 10 2	
624	9.7565.011	FV C 10 2	
625	2830.6491.005	FV C 1	
626	9.7625.061	S C 10 2	
627	9.7270.024	FV C 10 1	
628	360.2900.064	D 1	
629+	500.5496.113	FVAC 1	DIAM.=124
43+71+79+147+272+			SERIE GUARNIZIONI
287+305+349+414+460+			GASKET SET
461+517=			
=500.8180.039	FV CR 1	X 6LD260-260/C	
=520.8180.047	FV CR 1	X 6LD325-325/C	
=530.8180.055	FV CR 1	X 6LD360-360/C	

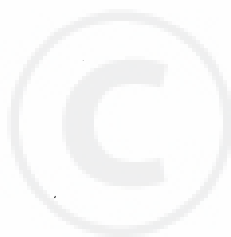
ASRI/GRM

\*\*\*\*\*

15.05.1985

\*\*\*\*\*

DESCRIZIONI NON IMPEGNATIVE/SUBJECT TO MODIFICATIONS



MATERIALE DI RETTIFICA  
GRINDING WORKSHOP PARTS LIST  
MATERIEL POUR RECTIFIEURS

GR. 6 - 1.5302.143  
PAG. 17

MOTORI-ENGINES-MOTEURS GR. 6

FIG. NO.	MATRICOLA P.NO	Q.TA Q.TY	NOTE REMARKS
80+	500.4845.071 FVICR10	1	STD. GUIDA V.ASP./INLET V.GUIDE
,,	500.4845.075 D I R10	1	+0,50
82+	500.4845.030 FV CR10	1	STD. GUIDA V.SCAR./EXHAUST V.GUIDE
,,	500.4845.052 D R10	1	+0.50
141+	500.8000.039 S CR10	1	ASP./INLET SOLD/ONLY X 6LD260-260/C
,,	520.8000.053 FVBCR10	1	SEDE V.ASPIRAZ./INLET V.SEAT
,,	283.8000.036 FVACR10	1	,,
142+	500.8000.038 S CR10	1	SC./EXHAUST SOLD/ONLY X 6LD260-260/C
,,	520.8000.054 FVBCR10	1	SEDE V.SCARICO/EXHAUST V.SEAT
,,	283.8000.037 FVACR10	1	,,
151+	500.8210.065 FV CR10	1	+0,50 X 6LD260-260/C
,,	500.8210.066 S CR10	1	+1,00
,,	520.8210.081 FV CR10	1	+0,50 X 6LD325-325/C
,,	520.8210.082 F CR10	1	+1,00
,,	530.8210.087 FV CR10	1	+0,50 X 6LD360-360/C
,,	530.8210.088 F CR10	1	+1,00
221+151+222+223=			
	=500.6501.091 FV CR	1	+0,50 X 6LD260-260/C
	=500.6501.092 S CR	1	+1,00
	=5030.6500.196 D CR	1	+0,50 X 6LD260/C CLOCKWISE ROTATION
	=5030.6500.197 D CR	1	+1,00
	=520.6502.029 FV CR	1	+0,50 X 6LD325-325/C
	=520.6502.030 F CR	1	+1,00
	=530.6502.064 FV CR	1	+0,50 X 6LD360-360/C
	=530.6502.065 F CR	1	+1,00
284	360.1640.067 FVICR	1	-0,25 X BIELLA/CONNECTING ROD
,,	360.1640.068 FVICR	1	-0,50
325+	500.9652.018 FV CR10	1	VALV.ASP./INLET V. X 6LD260-260/C
,,	520.9652.025 FVBCR10	1	VALVOLA ASPIRAZIONE/INLET VALVE
,,	520.9652.040 FVACR10	1	,,
327+	500.9685.028 FV CR10	1	VALV.SCAR./EXHAUST V. X 6LD260-260/C
,,	520.9685.039 FVBCR10	1	VALVOLA SCARICO/EXHAUST VALVE
,,	520.9685.051 FVACR10	1	,,
340	500.1611.013 FVICR	1	-0,50 LATO VOLANO/FLYWHELL SIDE
,,	500.1611.014 FVICR	1	-1,00
374	530.1611.019 FVICR	1	-0,50 LATO DISTRIBUZ./GEAR SIDE
,,	530.1611.020 FVICR	1	-1,00
43+71+79+147+272+			SERIE GUARNIZIONI
287+305+349+414+460+			GASKET SET
461+517=			
	=500.8180.039 FV CR	1	X 6LD260-260/C
	=520.8180.047 FV CR	1	X 6LD325-325/C
	=530.8180.055 FV CR	1	X 6LD360-360/C